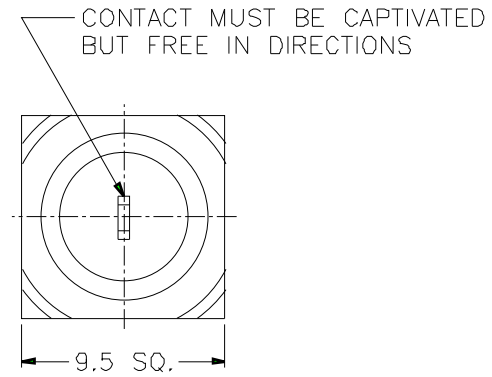
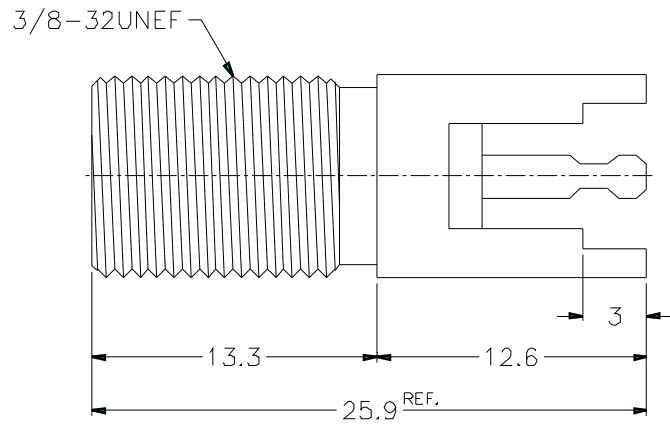


1			2			3			4			5			6			7			8		
REVISIONS																							
ISS	ZONE	DESCRIPTION\PER REQUEST\DATE																					



NOTES: FINISH (PLATING THICKNESS IN MICRO-INCHES)  
 1. BRASS PER QQ-B-626  
 2. NICKEL PL. 80 MIN. THICK OVER COPPER STRIKE  
 3. BRIGHT TIN PL. 80 MIN. THICK OVER COPPER PL. 100 MIN.

DIMENSIONS ARE IN MILLIMETERS									
UNLESS OTHERWISE SPECIFIED TOLERANCES									
0.5-6 = ±0.2									
6-30 = ±0.4									
30-120 = ±0.6									
120-315 = ±1									
315-1000 = ±1.6									
1000-2000 = ±2.4									

PART NO.	F625100-NPPT-75	
APPROVED	DATE	10-11-01'
CHECKED	DATE	10-11-01'
DRAWN	DATE	10-11-01'

**Amphenol**

TITLE  
F PC MOUNT CONNECTOR

DRAWING NO.  
KJ-F625100-NPPT

ITEM NO.

4	INSULATOR	P.P.	NATURAL	1	
3	CONTACT PIN	NOTE 1	NOTE 3	1	
2	INSULATOR	P.P.	NATURAL	1	
1	BODY	NOTE 1	NOTE 2	1	
NO.	DESCRIPTION	MATERIAL	FINISH	Q'TY	DRAWING NO.

NO.	DESCRIPTION	MATERIAL	FINISH	Q'TY	DRAWING NO.	SCALE	3/1	ISSUE	A	FILE NO.
-----	-------------	----------	--------	------	-------------	-------	-----	-------	---	----------

1                      2                      3                      4                      5                      6                      7                      8