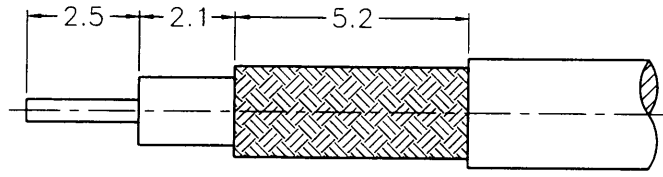


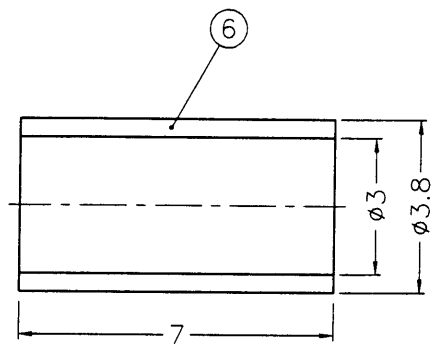
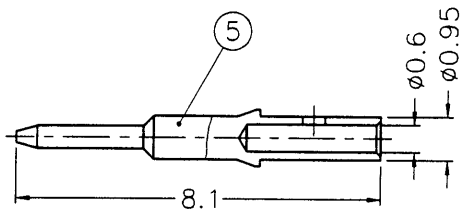
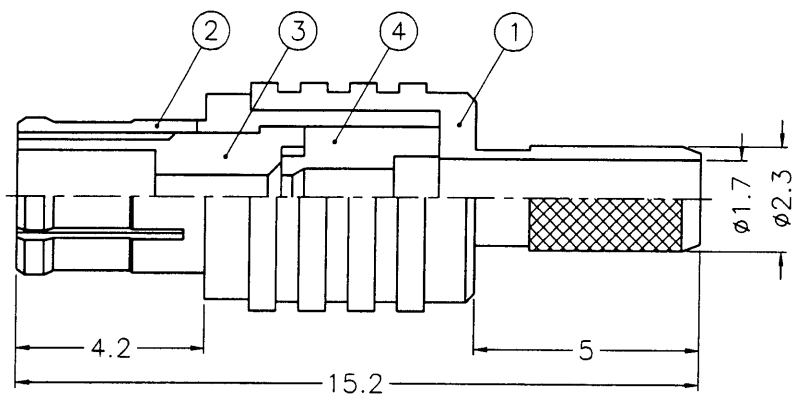
1 2 3 4 5 6 7 8

REVISIONS		
ISS	ZONE	DESCRIPTION\PER REQUEST\DATE
B	A-1	NO.2 WAS CHANGED\RD-DM89011401B\01-14-00'

業務部



RECOMMENDED
CABLE STRIPPING DIM'S
(建議剝線尺寸)



- NOTES: FINISH (PLATING THICKNESS IN MICRO-INCHES)
1. BRASS PER QQ-B-626
 2. GOLD PL. 3 MIN. THICK OVER NICKEL PL. 100 MIN. THICK OVER COPPER STRIKE
 3. BERYLLIUM COPPER PER QQ-C-530
 4. GOLD PL. 30 MIN. THICK OVER NICKEL PL. 100 MIN. THICK OVER COPPER STRIKE
 5. TEFLON MIL-P-19468

1. CRIMPED FERRULE
HEX CRIMP SIZE .128"
2. CRIMPED CONTACT PIN
SQ. CRIMP SIZE 0.7(mm)

89.1.24
R & D

NO.	DESCRIPTION	MATERIAL	FINISH	Q'TY	DRAWING NO.	SCALE	6/1	ISSUE	B	PART NO.	TITLE
6	FERRULE	COPPER	NOTE 2	1	FR-38/3X7C	DIMENSIONS ARE IN MILLIMETERS				APPROVED <i>Mark C</i> DATE 01-19-00' CHECKED <i>Case. W</i> DATE 01-19-00' DRAWN <i>Betty L</i> DATE 01-19-00'	Amphenol - Kai Jack TAINAN TAIWAN MCX CRIMP PLUG (FOR RG-174/U,188A/U,316/U) DRAWING NO. KJ-MCX1121A1-3GT30G-316U-50 FILE NO. F:\DWG\MCX\1121A1\316U-50\3GT30G
5	CONTACT PIN	NOTE 1	NOTE 4	1	MCX1121A1-5-095/06	UNLESS OTHERWISE SPECIFIED TOLERANCES					
4	INSULATOR	NOTE 5	NATURAL	1	MCX1121A1-4	0.5-6 = ±0.2					
3	INSULATOR	NOTE 5	NATURAL	1	MCX1121A1-3	6-30 = ±0.4					
2	BODY	NOTE 3	NOTE 2	1	MCX1121A1-2-B	30-120 = ±0.6					
1	HOUSING	NOTE 1	NOTE 2	1	MCX1121A1-1-23/17	120-315 = ±1					
						315-1000 = ±1.6					
						1000-2000 = ±2.4					

MCX-R0737