

1 2 3 4 5 6 7 8

F

F

E

E

D

D

C

C

B

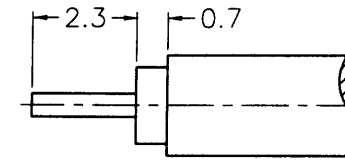
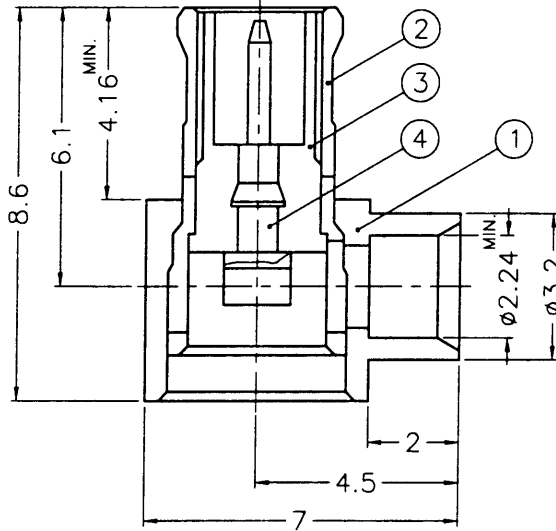
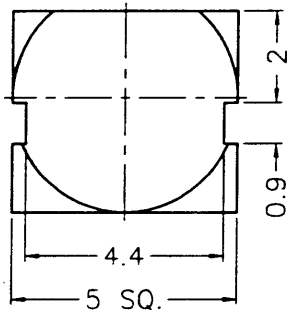
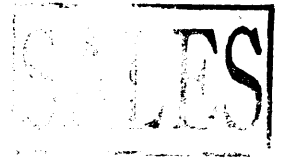
B

A

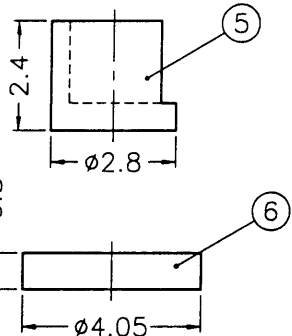
A

REVISIONS

ISS	ZONE	DESCRIPTION\PER REQUEST\DATE
B	A-1	NO.2 WAS CHANGED\RD-DM89011401B\01-14-00'
C	A-1	NO.1 WAS CHANGED\RD-DM89082401Y\08-24-00'
D	A-1	NO.3 WAS CHANGED\RD-DM90091401H\09-14-01'
		NO.2 WAS CHANGED\RD-DM90092801L\09-28-01'
E	A-1	NO.2 WAS CHANGED\RD-DM91072501L\10-29-02'



RECOMMENDED  
CABLE STRIPPING DIM'S  
(建議剝線尺寸)



NOTES: FINISH (PLATING THICKNESS IN MICRO-INCHES)

- BRASS PER QQ-B-626
- BRASS PER QQ-B-613
- GOLD PL. 3 MIN. THICK OVER NICKEL PL. 100 MIN. THICK OVER COPPER STRIKE
- BERYLLIUM COPPER PER QQ-C-530
- GOLD PL. 30 MIN. THICK OVER NICKEL PL. 100 MIN. THICK OVER COPPER STRIKE
- TEFLON MIL-P-19468



1. CONTACT PIN TO SOLDER

NO.	DESCRIPTION	MATERIAL	FINISH	Q'TY	DRAWING NO.	SCALE	6/1	ISSUE	E	FILE NO.	F:\DWG\MCX\1182A1\085-50\3GT30G	ITEM NO.	081182AAA45GE5F
6	COVER			1	CV-405X08-T								
5	INSULATOR	DELTRIN	NATURAL	1	MCX1112A1-5								
4	CONTACT PIN			1	MCX1112A1-4								
3	INSULATOR			1	MCX1112A1-3T-50-C								
2	BODY			1	BD08AAN01F								
1	HOUSING			1	MCX1182A1-1-32/224-C								

DIMENSIONS ARE IN MILLIMETERS		PART NO.
UNLESS OTHERWISE SPECIFIED TOLERANCES		APPROVED <i>Loak, 2</i> DATE 10-29-02'
0.5-6	= ±0.2	CHECKED <i>Loak, 2</i> DATE 10-29-02'
6-30	= ±0.4	DRAWN <i>Loak, 2</i> DATE 10-29-02'
30-120	= ±0.6	
120-315	= ±1	
315-1000	= ±1.6	
1000-2000	= ±2.4	

**Amphenol**  
Danbury, CT, USA - Tainan, Taiwan - Shenzhen, China

TITLE MCX R/A DIRECT SOLDER PLUG (FOR .085", .086")

DRAWING NO. KJ-MCX1182A1-3GT30G-.085-50

ITEM NO. 081182AAA45GE5F

1 2 3 4 5 6 7 RD-DR 15925 8