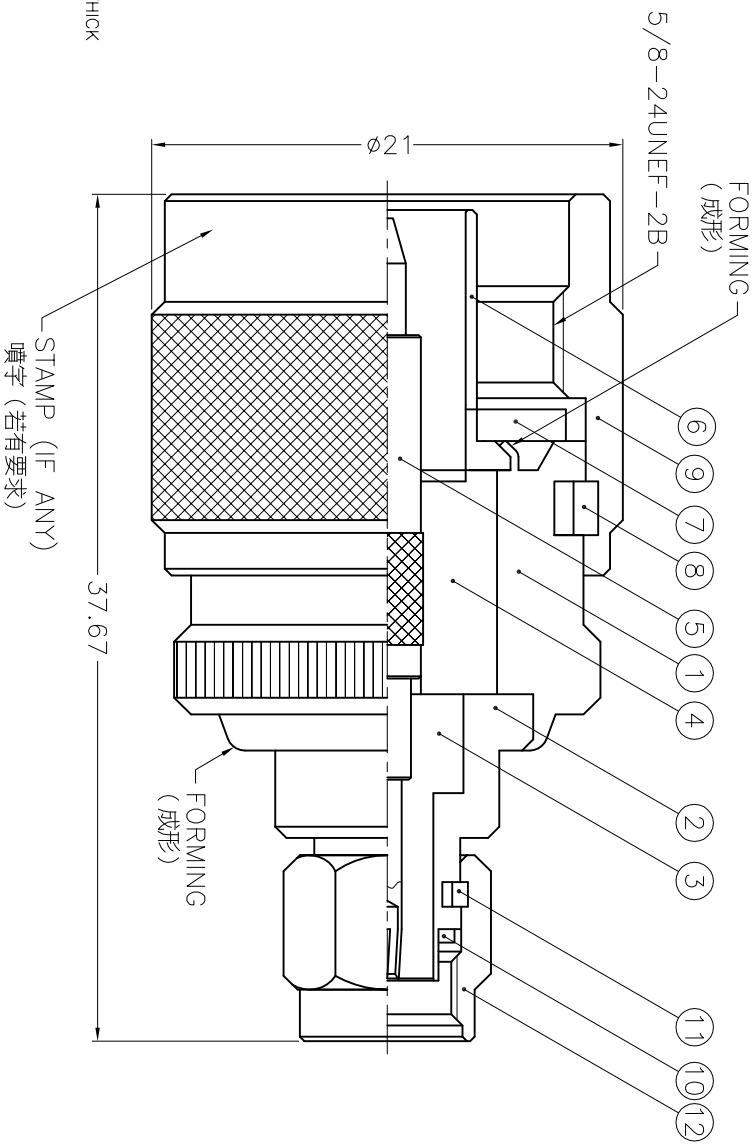


REVISIONS	
ISS ZONE	DESCRIPTION \ PER REQUEST \ DATE



NOTES: FINISH (PLATING THICKNESS IN MICRO-INCHES)

1. BRASS PER QQ-B-626
2. NICKEL PL. 100 MIN. THICK OVER COPPER STRIKE
3. GOLD PL. 3 MIN. THICK OVER NICKEL PL. 100 MIN. THICK OVER COPPER STRIKE
4. TEFLON MIL-P-19468
5. BERYLLIUM COPPER PER QQ-C-530
6. PHOSPHOR BRONZE PER QQ-B-750

12	SHELL	NOTE 1	NOTE 2	1	SMA5000-1-C
11	RETAINER RING	NOTE 5	NATURAL	1	SMA5000-4-B
10	GASKET	SILICONE	RED	1	GS-6/43X06
9	SHELL	NOTE 1	NOTE 2	1	N5000-1-B
8	RETAINER RING	SUS 304	NATURAL	1	N5000-7-C
7	GASKET	SILICONE	RED	1	GS-156/8X15
6	CONTACT BODY	NOTE 1	NOTE 2	1	N5000-5
5	CONTACT PIN	NOTE 6	NOTE 3	1	NM-SMAF1-1
4	INSULATOR	NOTE 4	NATURAL	1	NS00ABU08A
3	INSULATOR	NOTE 4	NATURAL	1	NS11ACP01A
2	BODY	NOTE 1	NOTE 2	1	NM-SWAM1-4
1	BODY	NOTE 1	NOTE 2	1	NM-SMAF1-2

DIMENSIONS ARE IN MILLIMETERS

UNLESS OTHERWISE SPECIFIED TOLERANCES

0.5-6 = ±0.2
6-30 = ±0.4
30-120 = ±0.6
120-315 = ±1
315-1000 = ±1.6
1000-2000 = ±2.4

PART NO.	
APPROVED	DATE
CHECKED	DATE
DRAWN	DATE

Danbury, CT, USA - Taiwan, Taiwan - Shenzhen, China	
Amphenol	
N PLUG TO SMA REVERSE POLARITY PLUG ADAPTOR	
DRAWING NO.	NM-RSMAF1-NT3G-50
ITEM NO.	03M-61F1-NA-5-F

1 2 3 4 5 6 7 8