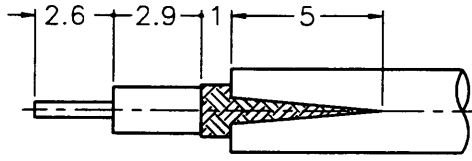
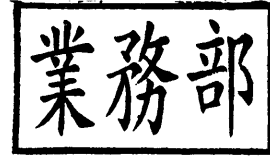
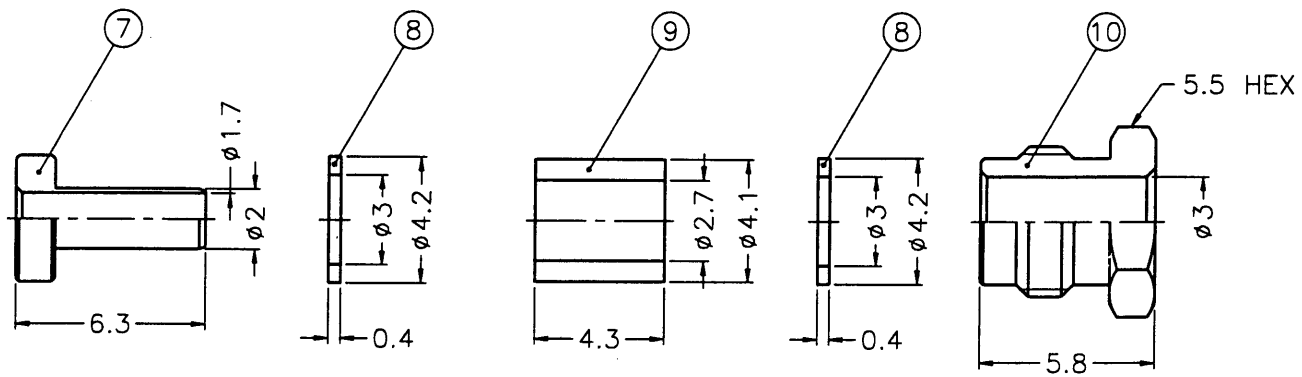
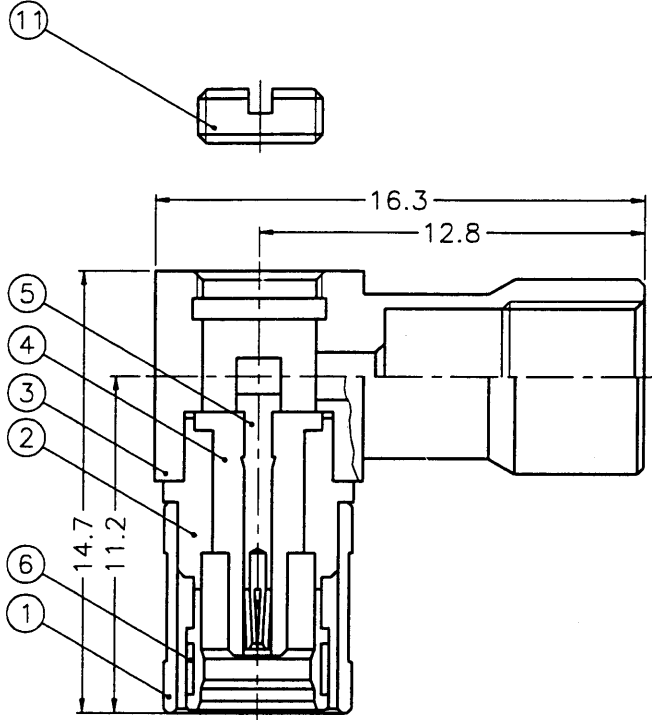


1 2 3 4 5 6 7 8

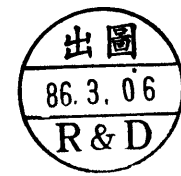
REVISIONS			
ISS	ZONE	DESCRIPTION\APPROVED\DATE	
A	A-1	NO.2 ,NO.3 AND NO.5 WERE CHANGED\TONY. T \12-28-94'	
	B-1	NO.11 WAS CHANGED\TONY. T \05-30-96'	
	A-1	DRAWING NO. WERE CHANGED ON NO.7 NO.8 NO.9	
	B-1	AND NO.10 \TONY. T \09-23-96'	
	A-7	SMB6142E1 WAS SMB5290\TONY. T \03-04-97'	



RECOMMENDED CABLE STRIPPING DIM'S



- NOTES: FINISH (PLATING THICKNESS IN MICRO-INCHES)
- BRASS PER QQ-B-626, ALLOY 360, 1/2 H
 - BRASS PER QQ-B-613, COMP 260, HARD TEMP
 - NICKEL PL. 100 MIN. OVER COPPER PL. 50 MIN. GOLD PL. MIN. OVER NICKEL PL. 50 MIN. OVER COPPER PL. 50 MIN.
 - BERYLLIUM COPPER PER QQ-C-530, ALLOY 173, 1/2 H
 - GOLD PL. 30 MIN. OVER NICKEL PL. 50 MIN. OVER COPPER PL. 50 MIN.
 - TEFLON MIL-P-19468



11	NUT	NOTE 1	NOTE 3	1	SMA1112A3-8-B
10	HEX NUT	NOTE 1	NOTE 3	1	SMB5200-9-55/3
9	GASKET	SILICONE	RED	1	GS-41/27X43
8	WASHER	NOTE 2	NOTE 3	2	WS-42/3X04
7	TOP HAT	NOTE 1	NOTE 3	1	SMB5290-7-2/17
6	RETAINER RING	NOTE 4	NATURAL	1	SMB5000-6
5	CONTACT PIN	NOTE 4	NOTE 5	1	SMB5090-5-A
4	INSULATOR	NOTE 6	NATURAL	1	SMB5090-4T-50
3	HOUSING	NOTE 1	NOTE 3	1	SMB5290-3-A
2	BODY	NOTE 1	NOTE 3	1	SMB5090-2-A
1	SHELL	NOTE 1	NOTE 3	1	SMB5000-1

DIMENSIONS ARE IN MILLIMETERS			
UNLESS OTHERWISE SPECIFIED TOLERANCES			
0.5-6	=	±	0.2
6-30	=	±	0.4
30-120	=	±	0.6
120-315	=	±	1
315-1000	=	±	1.6
1000-2000	=	±	2.4

PART NO.	
APPROVED	<i>Tony E</i> DATE 03-04-97'
CHECKED	<i>Mark C</i> DATE 03-04-97'
DRAWN	<i>Coase W</i> DATE 03-04-97'

<p>KAI JACK INDUSTRIAL CO., LTD. TAINAN TAIWAN R.O.C.</p>	
TITLE	SMB R/A CLAMP PLUG
DRAWING NO.	KJ-SMB6142E1-316U-50
FILE NO.	F:\DWG\SMB\6142E1\316U-50

F
E
D
C
B
A

F
E
D
C
B
A