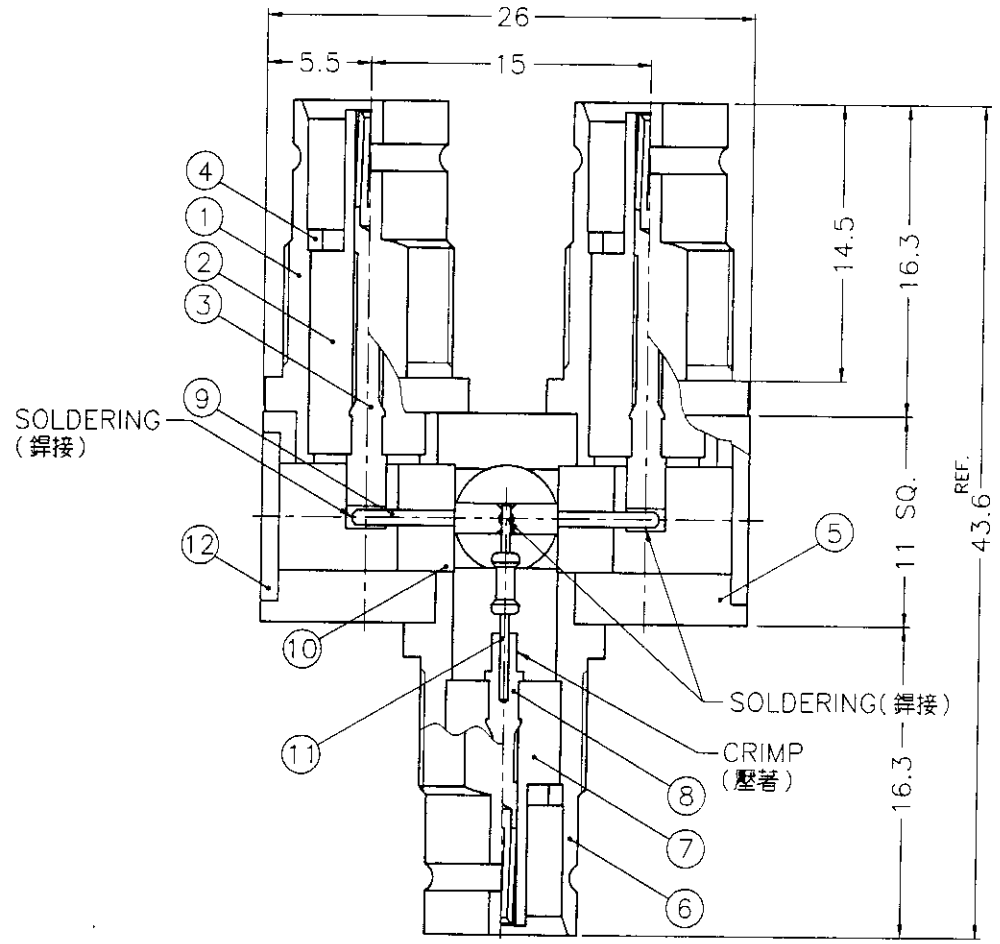


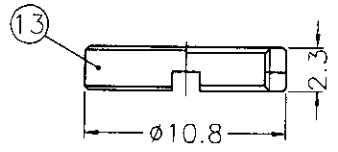
REVISIONS			
ISS	ZONE	DESCRIPTION\PER REQUEST\DATE	

業務部



NOTES: FINISH (PLATING THICKNESS IN MICRO-INCHES)
 1. BRASS PER QQ-B-626
 2. BRASS PER QQ-B-613
 3. PHOSPHOR BRONZE PER QQ-B-750
 4. TEFLON MIL-P-19468
 5. NICKEL PL. 100 MIN. THICK OVER COPPER STRIKE
 6. GOLD PL. 3 MIN. THICK OVER NICKEL PL. 100 MIN. THICK OVER COPPER STRIKE

13	NUT	NOTE 1	NOTE 5	1	RN108-9-05X23S
12	COVER	NOTE 2	NOTE 5	3	CV-895X07-T
11	RESISTOR	766R		1	RS-766R-1/8W -1%
10	INSULATOR	NOTE 4	NATURAL	2	15687062401-10
9	PIN	NOTE 1	NOTE 6	1	15687062401-9
8	CONTACT PIN	NOTE 3	NOTE 6	1	15687062401-8
7	INSULATOR	NOTE 4	NATURAL	1	15687062401-7
6	BODY	NOTE 1	NOTE 6	1	15687062401-6
5	HOUSING	NOTE 1	NOTE 5	1	15687062401-5
4	LOCK RING	NOTE 1	NOTE 6	3	S931-750-3
3	CONTACT PIN	NOTE 3	NOTE 6	2	1568077A1-3
2	INSULATOR	NOTE 4	NATURAL	2	15687070201-3
1	BODY	NOTE 1	NOTE 6	2	15687070201-2
NO.	DESCRIPTION	MATERIAL	FINISH	Q'TY	DRAWING NO.



出圖
88.10.14
R & O

DIMENSIONS ARE IN MILLIMETERS		PART NO.		<h3>Amphenol - Kai Jack</h3> <p>TAINAN TAIWAN</p>
UNLESS OTHERWISE SPECIFIED TOLERANCES		APPROVED	DATE	
0.5-6 = ±0.2		<i>Mark C</i>	10-12-99'	
6-30 = ±0.4		CHECKED	DATE	
30-120 = ±0.6		<i>Coast W</i>	10-12-99'	TITLE
120-315 = ±1		DRAWN	DATE	1.6-5.6 F-F-F Y-LINK
315-1000 = ±1.6		<i>Betty L</i>	10-12-99'	DRAWING NO.
1000-2000 = ±2.4				KJ-1568077A1-N/3GT3G-75
SCALE	2.5/1	ISSUE	A	FILE NO. F:\DWG\156\8077A1\75\N3GT3G

F
E
D
C
B
A

F
E
D
C
B
A