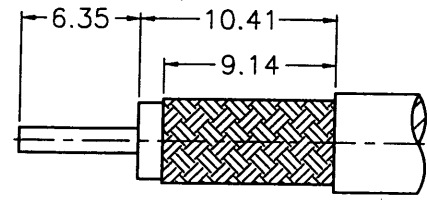


1 2 3 4 5 6 7 8

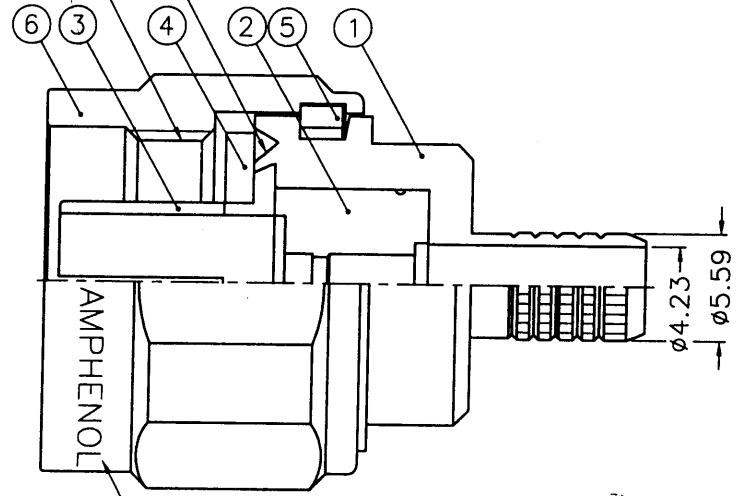
| REVISIONS | | |
|-----------|------|------------------------------|
| ISS | ZONE | DESCRIPTION\PER REQUEST\DATE |
| | | |



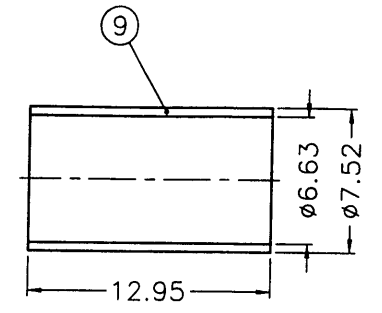
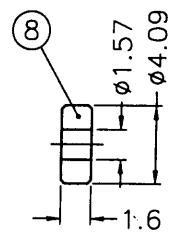
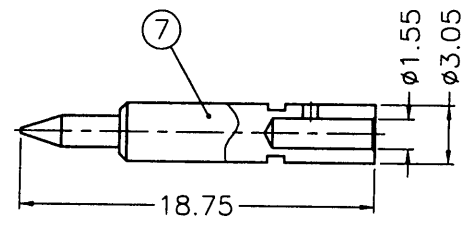
RECOMMENDED
CABLE STRIPPING DIM'S
(建議剝線尺寸)

SALES

5/8-24UNEF-2B
STAKE IN 6 PLACES
DON'T DISTORT ASSEMBLY.
(SEE REMARK 1)
(打六點,不可使組立扭曲)



STAMP "AMPHENOL 82-6106 XXXX"
4 DIGIT DATE CODE, YEAR/WEEK
IN 1.2mm HIGH DEPRESSED CHARACTERS
(戳字"AMPHENOL 82-6106 XXXX"
4個日期碼為,年/週,字高1.2mm)



ISSUED
2003. 4. 11
R&D

- NOTES: FINISH (PLATING THICKNESS IN MICRO-INCHES)
- BRASS PER QQ-B-626
 - PHOSPHOR BRONZE PER QQ-B-750
 - NICKLE PL. 100 MIN. THICK OVER COPPER STRIKE.
 - GOLD PL. 50 MIN. THICK OVER NICKEL PL. 100 MIN. THICK OVER NICKEL STRIKE
 - TEFLON MIL-P-19468

- REMARK: 1. NO.3 MUST NOT ROTATE UNDER FINGER PRESSURE AND MUST RESIST A 25 LBS. AXIAL PUSH OUT FORCE.
(以手指壓後 NO.3 不可以旋轉,且至少承受 25 LBS. 軸向力)
2. CRIMP USING AMPHENOL TOOL 227-944 (M22520/5-01) AND DIE SET 227-1221-59, CAVITY "A" (.255 HEX.) & CAVITY "B" (.100 HEX.)
(套管壓著工具及內導線壓著工具)

| NO. | DESCRIPTION | MATERIAL | FINISH | Q'TY | DRAWING NO. |
|-----|---------------|----------|---------|------|-------------|
| 9 | FERRULE | COPPER | NOTE 3 | 1 | 31-1357-7 |
| 8 | INSULATOR | NOTE 5 | NATURAL | 1 | 82-11874 |
| 7 | CONTACT | NOTE 1 | NOTE 4 | 1 | 82-11831 |
| 6 | COUPLING NUT | NOTE 1 | NOTE 3 | 1 | 82-11384 |
| 5 | RETAINER RING | NOTE 2 | NATURAL | 1 | 82-1138-8 |
| 4 | GASKET | SILICONE | RED | 1 | GS-156/8X15 |
| 3 | OUTER CONTACT | NOTE 1 | NOTE 3 | 1 | 82-2849 |
| 2 | INSULATOR | NOTE 5 | NATURAL | 1 | 82-11821 |
| 1 | N BODY | NOTE 1 | NOTE 3 | 1 | 82-11820 |

DIMENSIONS ARE IN MILLIMETERS
UNLESS OTHERWISE SPECIFIED
TOLERANCES
0.5-6 = ±0.2
6-30 = ±0.4
30-120 = ±0.6
120-315 = ±1
315-1000 = ±1.6
1000-2000 = ±2.4

| PART NO. | |
|----------|------|
| APPROVED | DATE |
| CHECKED | DATE |
| DRAWN | DATE |

| Amphenol | |
|---|---|
| Danbury, CT, USA - Tainan, Taiwan - Shenzhen, China | |
| TITLE | N PLUG CRIMP/CRIMP FOR TWB-2401 & LMR-240 CABLE |
| DRAWING NO. | 82-6106 |
| ITEM NO. | 82-6106 |

| NO. | DESCRIPTION | MATERIAL | FINISH | Q'TY | DRAWING NO. | SCALE | 2.5/1 | ISSUE | A | FILE NO. |
|-----|-------------|----------|--------|------|-------------|-------|-------|-------|---|---------------------|
| | | | | | | | | | | F:\DWG\CNPD\82\6106 |

7RD-DR 178938

F
E
D
C
B
A

F
E
D
C
B
A