

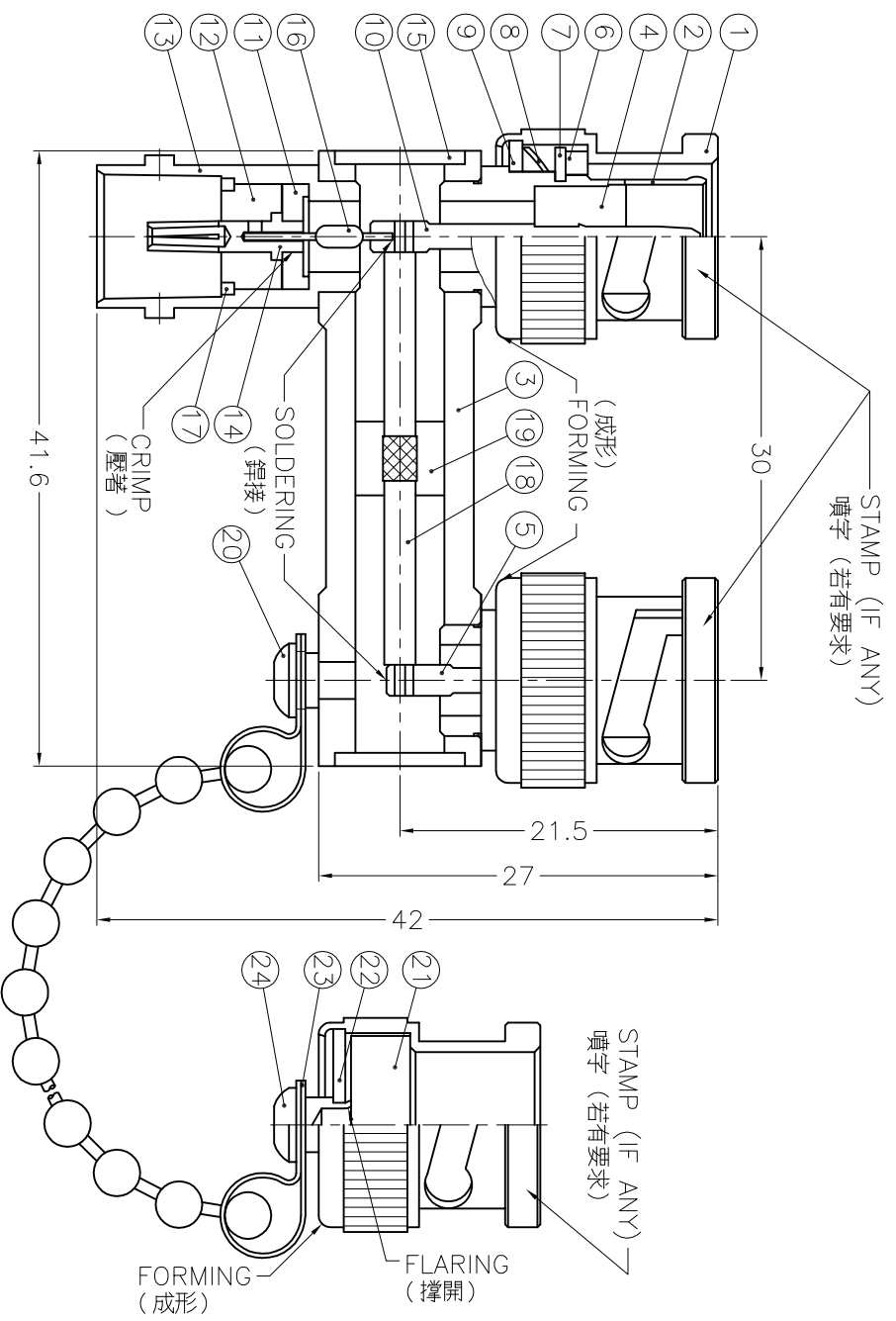
ISS	ZONE	DESCRIPTION\PER REQUEST\DATE
-----	------	------------------------------

REVISIONS

NOTES: FINISH (PLATING THICKNESS IN MICRO-INCHES)

1. BRASS PER QQ-B-626
2. BRASS PER QQ-B-613
3. NICKEL PL. 100 MIN. THICK OVER COPPER PL. 300 MIN. THICK
4. NICKEL PL. 100 MIN. THICK OVER COPPER STRIKE
5. NICKEL PL. 200 MIN. THICK OVER COPPER STRIKE
6. PHOSPHOR BRONZE PER QQ-B-750
7. GOLD PL. 3 MIN. THICK OVER NICKEL PL. 100 MIN. THICK OVER COPPER STRIKE
8. TEFLON MIL-P-19468
9. ZINC DIECAST

24	RIVET	NOTE 1	NOTE 4	1	B500-5
23	CHAIN	NOTE 1	NOTE 4	1	B500-4X100
22	WASHER	NOTE 2	NOTE 4	1	WS-128/31X08
21	GASKET	SILICONE	RED	1	GS-12X4
20	RIVET	NOTE 1	NOTE 4	1	RV00AAA01B
19	INSULATOR	NOTE 8	NATURAL	1	B207600-32-10
18	CONTACT PIN	NOTE 1	NOTE 7	1	B2076A1-11
17	LOCK RING	NOTE 1	NOTE 4	1	B5071A1-4
16	RESISTOR	75R	0.125W	1	RS-75R-0.125W -1%
15	COVER	NOTE 2	NOTE 4	2	CV-895X07-T
14	CONTACT PIN	NOTE 6	NOTE 7	1	B6141A1-3-21/ 06
13	BODY	NOTE 1	NOTE 4	1	S38-4082-75-13
12	INSULATOR	DELFIN	NATURAL	1	B7200-2-75
11	INSULATOR	DELFIN	NATURAL	1	B7200-4-50
10	CONTACT PIN	NOTE 1	NOTE 7	1	S384-08075-10
9	WASHER	NOTE 2	NOTE 4	2	WS-128/9X08
8	SPRING	SK5	NOTE 5	2	B50000-6
7	RETAINER RING	NOTE 1	NOTE 4	2	B50000-5
6	GASKET	RUBBER	RED	2	GS-115/8X15
5	CONTACT PIN	NOTE 1	NOTE 7	1	B5091-6-75-B
4	INSULATOR	DELFIN	NATURAL	2	B5091-5-75-B
3	HOUSING	NOTE 1	NOTE 4	1	S384-08075-3 -B
2	BODY	NOTE 1	NOTE 4	2	B207600-32-2
1	SHELL	NOTE 9	NOTE 3	3	B50000Z-1
NO.	DESCRIPTION	MATERIAL	FINISH	Q'TY	DRAWING NO.



**Amphenol**

Danbury, CT, USA - Tainan, Taiwan - Shenzhen, China

TITLE  
BNC M-M-F LINK ADAPTOR

DRAWING NO.  
B4070A4-ND3G-75

DIMENSIONS ARE IN MILLIMETERS		PART NO.	
UNLESS OTHERWISE SPECIFIED		APPROVED	
TOLERANCES		DATE	
0.5-6 = ±0.2	6-30 = ±0.4	30-120 = ±0.6	120-315 = ±1
315-1000 = ±1.6	1000-2000 = ±2.4		
SCALE	2/1	ISSUE	A1
FILE NO.	F:\DWG\B\4070A4\75\ND3G		
DRAWN	ANGELA		DATE
CHECKED			08-29-03'
DRAWING NO.	B4070A4-ND3G-75		ITEM NO.