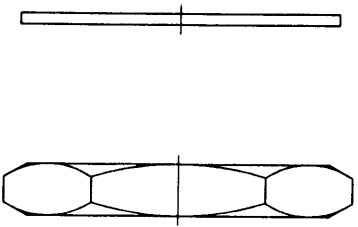
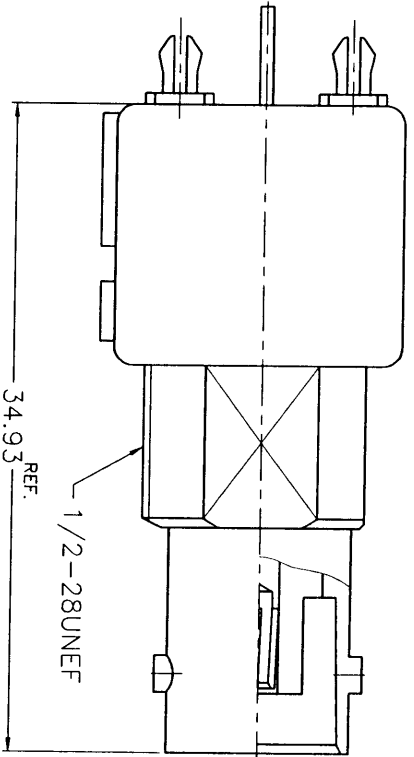
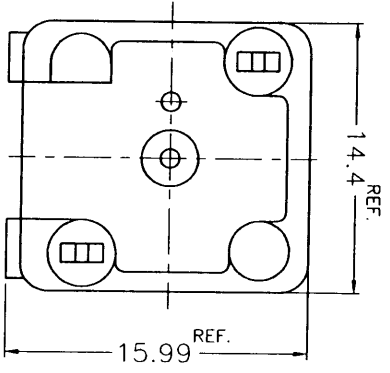
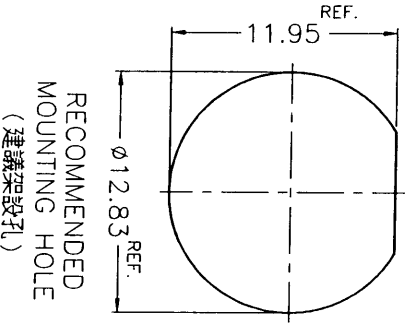
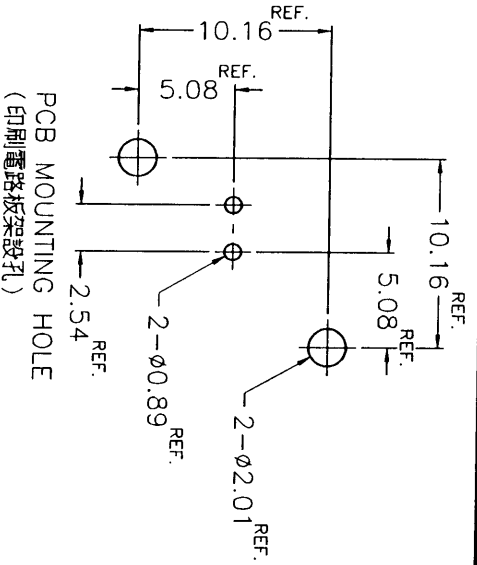


ISS	ZONE	DESCRIPTION\PER REQUEST\DATE



- NOTES: FINISH (PLATING THICKNESS IN MICRO-INCHES)
1. BRASS PER QQ-B-626
  2. BRASS PER QQ-B-613
  3. NICKEL PL. 100 MIN. THICK OVER ZINC ALLOY
  4. TIN PLATING
  5. PHOSPHOR BRONZE PER QQ-B-750
  6. GOLD FLASH OVER NICKEL PL. 50 MIN. THICK AT MATING AREA.
  7. ZINC DIECAST
  8. POLYPROPYLENE UL 94HB

1. MAX. PANEL THICKNESS=5mm



7	HEX NUT	NOTE 1	NOTE 3
6	LOCK WASHER	NOTE 2	NOTE 3
5	MOUNTING POST	NOTE 2	NOTE 4
4	POST	COPPER	NOTE 4
3	CONTACT PIN	NOTE 5	NOTE 6
2	INSULATOR	NOTE 8	NATURAL
1	BODY	NOTE 7	NOTE 3
NO.	DESCRIPTION	MATERIAL	FINISH

DIMENSIONS ARE IN MILLIMETERS	
UNLESS OTHERWISE SPECIFIED TOLERANCES	
0.5-6	= ±0.2
6-30	= ±0.4
30-120	= ±0.6
120-315	= ±1
315-1000	= ±1.6
1000-2000	= ±2.4

PART NO.	
APPROVED	DATE 02-16-01'
CHECKED	DATE 02-16-01'
DRAWN	DATE 02-16-01'

TITLE	BNC STRAIGHT PC MOUNT RECEPT. JACK
DRAWING NO.	KJ-B6251G3-NPP3G-50
FILE NO.	F:\DWG\B\6251G3\50\NPP3G

KD8DR11679