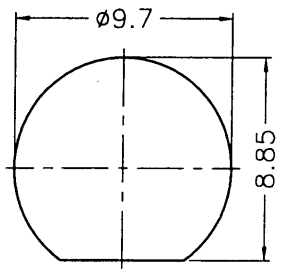
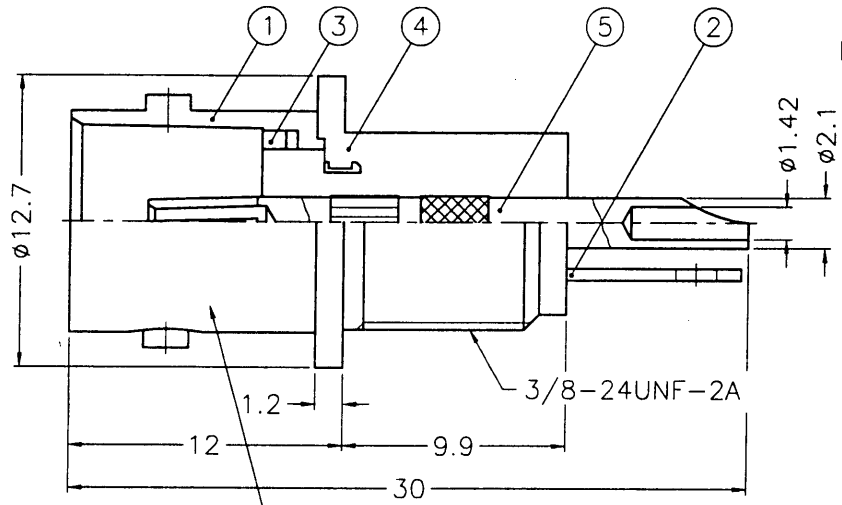


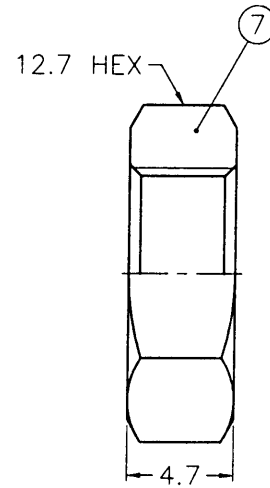
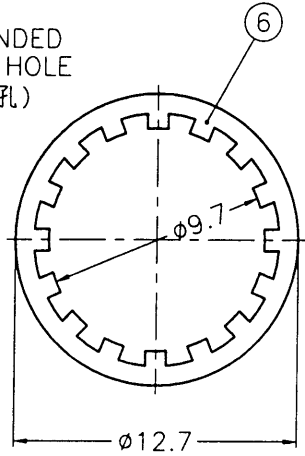
| REVISIONS | | |
|-----------|------|------------------------------|
| ISS | ZONE | DESCRIPTION\PER REQUEST\DATE |
| | | |



SALES



RECOMMENDED MOUNTING HOLE
(建議架設孔)



STAMP (IF ANY)
噴字 (若有要求)

- NOTES: FINISH (PLATING THICKNESS IN MICRO-INCHES)
- BRASS PER QQ-B-626
 - BRASS PER QQ-B-613
 - NICKEL PL. 100 MIN. THICK OVER COPPER STRIKE
 - PHOSPHOR BRONZE PER QQ-B-750
 - GOLD PL. 10 MIN. THICK OVER NICKEL PL. 100 MIN. THICK OVER COPPER STRIKE
 - BRIGHT TIN PL. 200 MIN. THICK OVER NICKEL PL. 50 MIN. THICK OVER COPPER PL. 100 MIN. THICK

RECOMMENDED TORQUE: A MAXIMUM TORQUE OF 12 INCH-LBS MAY BE APPLIED ON HEX NUT WHEN MOUNTING CONNECTOR IN PANEL.
(建議扭力:當架設接頭於基板時 六角螺母最大適用12 inch-lbs 的扭力)



| NO. | DESCRIPTION | MATERIAL | FINISH | Q'TY | DRAWING NO. |
|-----|-----------------|----------|--------|------|-----------------|
| 7 | HEX NUT | NOTE 1 | NOTE 3 | 1 | HN127-3/8-24X47 |
| 6 | LOCK WASHER | NOTE 2 | NOTE 3 | 1 | LW-127/97X05 |
| 5 | CONTACT PIN | NOTE 4 | NOTE 5 | 1 | B7300-5 |
| 4 | INSULATOR | NYLON | WHITE | 1 | B6651B1-1-75-D |
| 3 | LOCK RING | NOTE 2 | NOTE 3 | 1 | D |
| 2 | BRAID GROUNDING | NOTE 2 | NOTE 6 | 1 | |
| 1 | BODY | NOTE 1 | NOTE 3 | 1 | |

DIMENSIONS ARE IN MILLIMETERS
UNLESS OTHERWISE SPECIFIED TOLERANCES

| | |
|-----------|--------|
| 0.5-6 | = ±0.2 |
| 6-30 | = ±0.4 |
| 30-120 | = ±0.6 |
| 120-315 | = ±1 |
| 315-1000 | = ±1.6 |
| 1000-2000 | = ±2.4 |

| PART NO. | |
|----------|------|
| APPROVED | DATE |
| CHECKED | DATE |
| DRAWN | DATE |

| | |
|---|------------------------------------|
| Amphenol | |
| Danbury, CT, USA - Tainan, Taiwan - Shenzhen, China | |
| TITLE | BNC BULKHEAD RECEPT. ISOLATED JACK |
| DRAWING NO. | B6651B1-NNYL10G-75 |
| ITEM NO. | 016651AAA01JG7F |

A

A