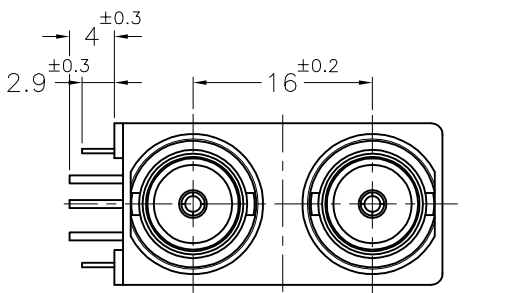
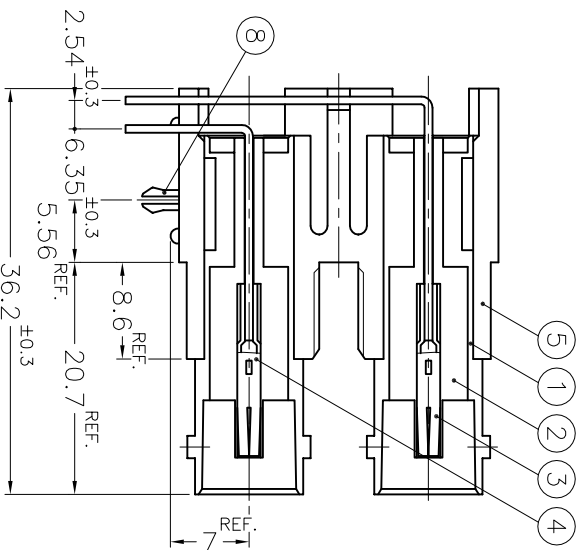
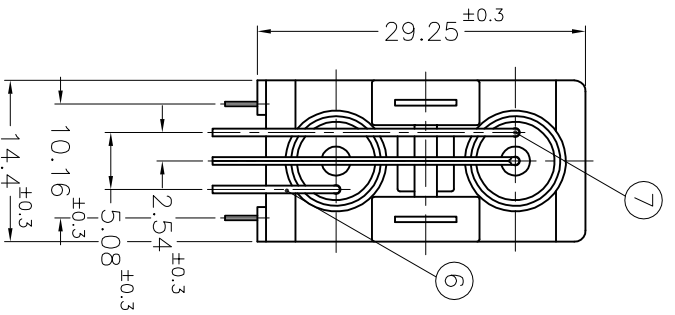


REVISIONS	
ISS ZONE	DESCRIPTION \ PER REQUEST \ DATE
A1	B-1 ADDED NO.9 & NO.10\N/A\01-18-02'



- NOTES: FINISH (PLATING THICKNESS IN MICRO-INCHES)
1. BRASS PER QQ-B-626
  2. ZINC DIECAST
  3. NICKEL PL. 100 MIN. THICK OVER COPPER STRIKE
  4. PHOSPHOR BRONZE PER QQ-B-750
  5. GOLD FLASH OVER NICKEL PL. 100 MIN. THICK OVER COPPER STRIKE AT MATING AREA.
  6. BRIGHT TIN PL. 80 MIN. THICK OVER COPPER PL. 100 MIN. THICK OVER NICKEL PL. 50 MIN. THICK OVER COPPER PL. 100 MIN. THICK AT TAIL.
  7. POLYPROPYLENE UL 94HB
  8. PBT (UL 94 V-0)
  9. NICKEL PL. 80 MIN. THICK OVER COPPER STRIKE

10	HEX NUT	NOTE 1	NOTE 9	2
9	LOCK WASHER	NOTE 4	NOTE 9	2
8	MOUNTING POST	NOTE 1	NOTE 6	2
7	POST	COPPER	NOTE 6	1
6	POST	COPPER	NOTE 6	1
5	HOUSING	NOTE 8	BLACK	1
4	CONTACT PIN	NOTE 4	NOTE 5	1
3	CONTACT PIN	NOTE 4	NOTE 5	1
2	INSULATOR	NOTE 7	NATURAL	2
1	BODY	NOTE 2	NOTE 3	2

DIMENSIONS ARE IN MILLIMETERS		PART NO.	
UNLESS OTHERWISE SPECIFIED TOLERANCES		APPROVED	DATE
0.5-6	= ±0.2	CHECKED	DATE
6-30	= ±0.4	DRAWN	DATE
30-120	= ±0.6		
120-315	= ±1		
315-1000	= ±1.6		
1000-2000	= ±2.4		

TITLE		DRAWING NO.	
DUAL PORT BNC R/A PCB MOUNT RECEPTACLE		KJ-B705002-NPB3G-75	
TAINAN TAIWAN		DRAWING NO. 017050AAD00MA7F	
F:\DWG\B\705002\75\NPB3G		ITEM NO. 017050AAD00MA7F	

# Amphenol - Kai Jack

A

B

C

D

E

F

A

B

C

D

E

F

1 2 3 4 5 6 7 8