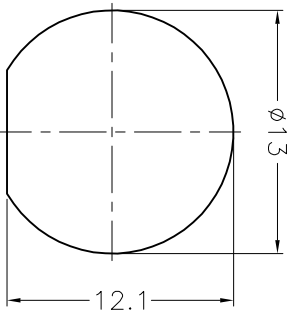
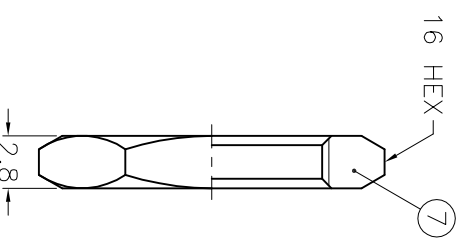
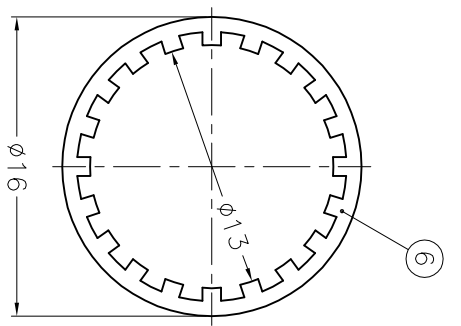
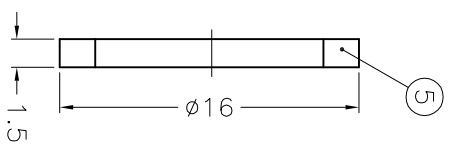
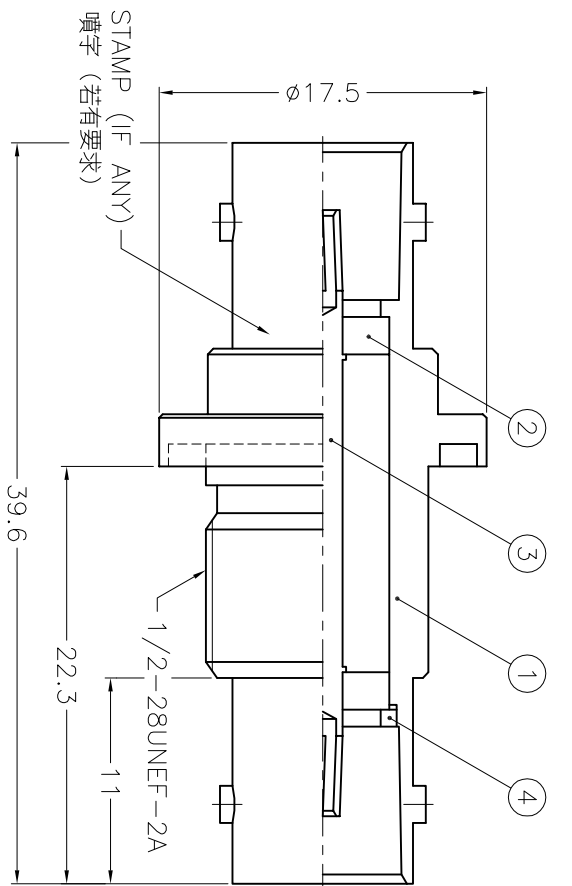


ISS	ZONE	REVISIONS
		DESCRIPTION\PER REQUEST\DATE



NOTES: FINISH (PLATING THICKNESS IN MICRO-INCHES)

1. BRASS PER QQ-B-626
2. BRASS PER QQ-B-613
3. NICKEL PL. 100 MIN. THICK OVER COPPER STRIKE
4. PHOSPHOR BRONZE PER QQ-B-750
5. GOLD PL. 10 MIN. THICK OVER NICKEL PL. 100 MIN. THICK OVER COPPER STRIKE
6. TEFLON MIL-P-19468

1. MAX. PANEL THICKNESS=7mm

NO.	DESCRIPTION	MATERIAL	FINISH	Q'TY	DRAWING NO.
7	HEX NUT	NOTE 1	NOTE 3	1	HN16-1/2-28X28
6	LOCK WASHER	NOTE 2	NOTE 3	1	LW-16/13X05
5	GASKET	RUBBER	RED	1	GS-16/122X15
4	LOCK RING	NOTE 1	NOTE 3	1	LR-79/62X08
3	CONTACT PIN	NOTE 4	NOTE 5	1	CP01AGU--
2	INSULATOR	NOTE 6	NATURAL	2	B7771B4-2T-75
1	BODY	NOTE 1	NOTE 3	1	BD01-----

DIMENSIONS ARE IN MILLIMETERS	
UNLESS OTHERWISE SPECIFIED	TOLERANCES
0.5-6 = ±0.2	6-30 = ±0.4
30-120 = ±0.6	120-315 = ±1
315-1000 = ±1.6	1000-2000 = ±2.4

PART NO.	
APPROVED	DATE
CHECKED	DATE
DRAWN	DATE
FILE NO.	F:\DWG\B\7471A1\005\75\NT15G

Danbury, CT, USA - Taiwan, Taiwan - Shenzhen, China	
TITLE	BNC FEMALE TO FEMALE BULKHEAD ADAPTOR
DRAWING NO.	B7471A1-005-NT10G-75
ITEM NO.	

**Amphenol**

A

B

C

D

E

F

A

B

C

D

E

F