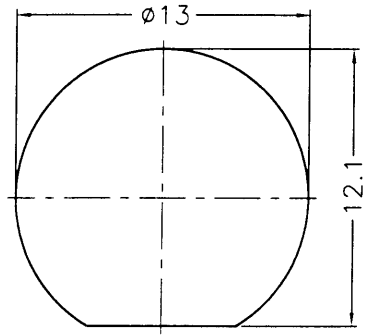


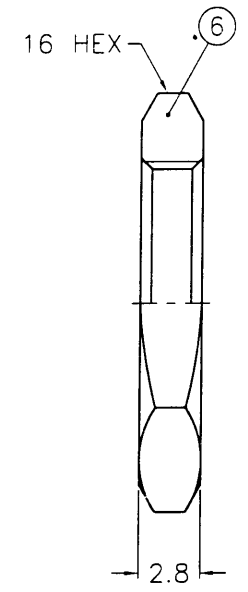
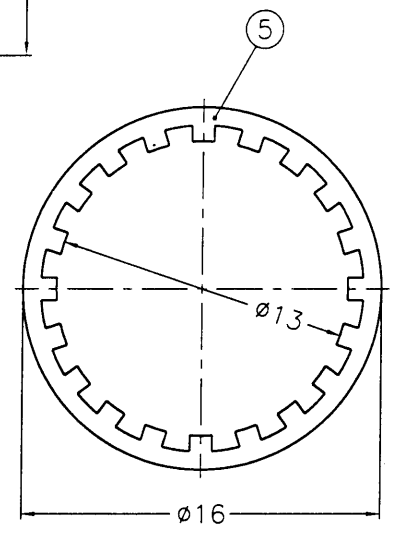
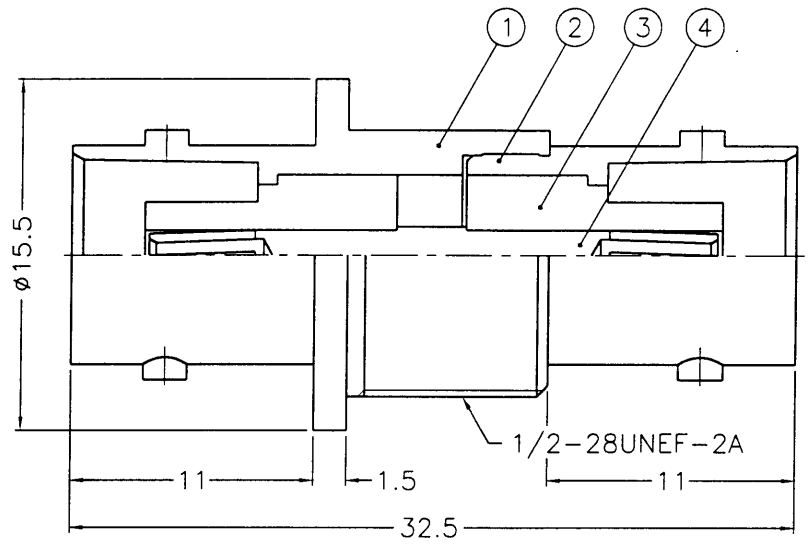
1 2 3 4 5 6 7 8

| REVISIONS | | |
|-----------|------|------------------------------|
| ISS | ZONE | DESCRIPTION\PER REQUEST\DATE |
| | | |



業務部

RECOMMENDED MOUNTING HOLE
(建議架設孔)



NOTES: FINISH (PLATING THICKNESS IN MICRO-INCHES)
 1. BRASS PER QQ-B-626
 2. BRASS PER QQ-B-613
 3. NICKEL PL. 100 MIN. THICK OVER COPPER STRIKE
 4. PHOSPHOR BRONZE PER QQ-B-750
 5. GOLD PL. 3 MIN. THICK OVER NICKEL PL. 100 MIN. THICK OVER COPPER STRIKE

88.5.20

| DIMENSIONS ARE IN MILLIMETERS | | | | | PART NO. | | KAI JACK INDUSTRIAL CO., LTD. TAINAN TAIWAN R.O.C. | |
|---------------------------------------|--|--|--|--|-----------|--|---|--|
| UNLESS OTHERWISE SPECIFIED TOLERANCES | | | | | APPROVED | | TITLE | |
| 0.5-6 = ±0.2 | | | | | Mark C | | BNC FEMALE TO FEMALE BULKHEAD ADAPTOR | |
| 6-30 = ±0.4 | | | | | DATE | | DRAWING NO. | |
| 30-120 = ±0.6 | | | | | 05-18-99' | | KJ-B7471B1-ND3G-50 | |
| 120-315 = ±1 | | | | | CHECKED | | FILE NO. | |
| 315-1000 = ±1.6 | | | | | Mark C | | F:\DWG\B\7471B1\50\ND3G | |
| 1000-2000 = ±2.4 | | | | | DATE | | | |
| | | | | | 05-18-99' | | | |
| | | | | | DRAWN | | | |
| | | | | | Aca | | | |
| | | | | | DATE | | | |
| | | | | | 05-18-99' | | | |

| NO. | DESCRIPTION | MATERIAL | FINISH | Q'TY | DRAWING NO. |
|-----|-------------|----------|---------|------|----------------|
| 6 | HEX NUT | NOTE 1 | NOTE 3 | 1 | HN16-1/2-28X28 |
| 5 | LOCK WASHER | NOTE 2 | NOTE 3 | 1 | LW-16/13X05 |
| 4 | CONTACT PIN | NOTE 4 | NOTE 5 | 1 | B7900-4 |
| 3 | INSULATOR | DELRIN | NATURAL | 2 | B7996ZZ-3-50 |
| 2 | BODY | NOTE 1 | NOTE 3 | 1 | B74000-2 |
| 1 | HOUSING | NOTE 1 | NOTE 3 | 1 | B7915-1-A |

A

A

8207R5601

1 2 3 4 5 6 7 8