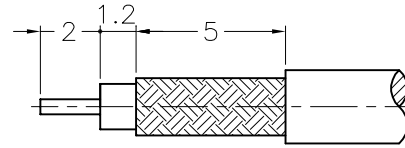
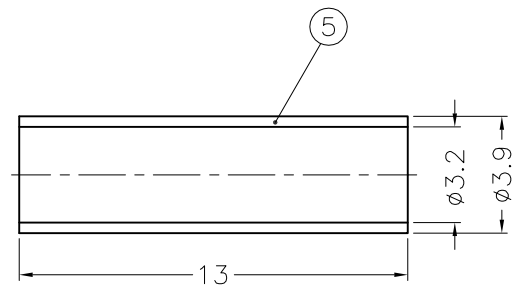
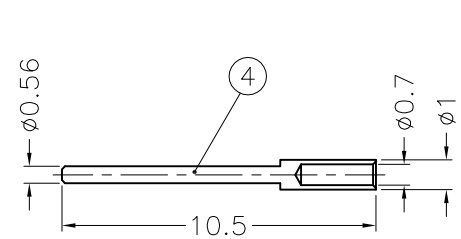
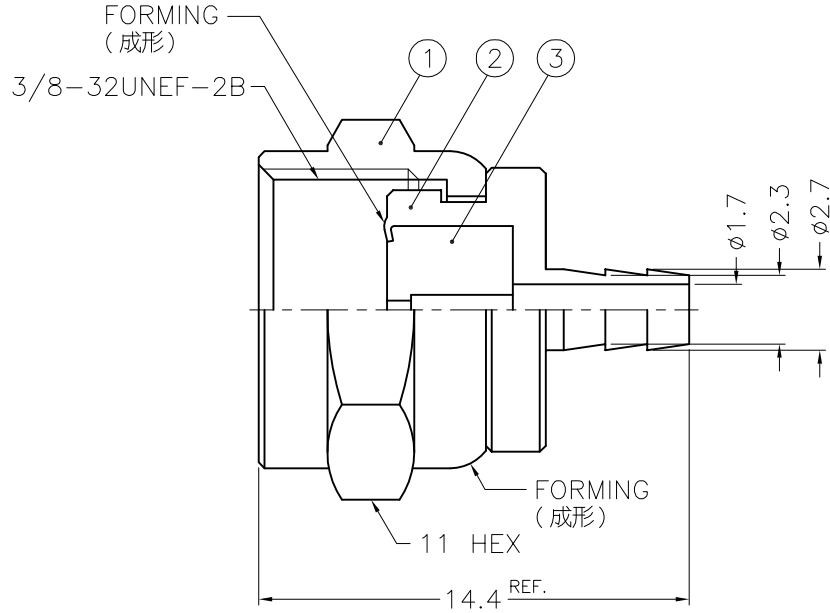


1 2 3 4 5 6 7 8

REVISIONS			
ISS	ZONE	DESCRIPTION	PER REQUEST DATE



RECOMMENDED
CABLE STRIPPING DIM'S
(建議剝線尺寸)



1. CRIMPED FERRULE
HEX CRIMP SIZE .128"

- NOTES: FINISH (PLATING THICKNESS IN MICRO-INCHES)
- BRASS PER QQ-B-626
 - TIN-LEAD (90/10) PL. 100 MIN. THICK OVER NICKEL PL. 50 MIN. THICK OVER COPPER PL. 100 MIN. THICK
 - BRIGHT TIN PL. 200 MIN. THICK OVER NICKEL PL. 50 MIN. THICK OVER COPPER PL. 100 MIN. THICK
 - TEFLON MIL-P-19468
 - JIS H 3250, C 2600

DIMENSIONS ARE IN MILLIMETERS				PART NO.	
UNLESS OTHERWISE SPECIFIED TOLERANCES				APPROVED	DATE
0.5-6 = ±0.2					10-22-02'
6-30 = ±0.4				CHECKED	DATE
30-120 = ±0.6					10-22-02'
120-315 = ±1				DRAWN	DATE
315-1000 = ±1.6				ANGELA	10-22-02'
1000-2000 = ±2.4				FILE NO.	F:\DWG\F\1111A1\002\316U-75\TTT
SCALE	4/1	ISSUE	A2		

Amphenol - Kai Jack	
TAINAN TAIWAN	
TITLE F CRIMP PLUG (FOR RG-316/U, 174/U, 188A/U CABLE)	
DRAWING NO. KJ-F1111A1-002-TTT-316U-75	
ITEM NO.	

NO.	DESCRIPTION	MATERIAL	FINISH	Q'TY	DRAWING NO.
5	FERRULE	NOTE 5	NOTE 2	1	FR-39/32X13
4	CONTACT PIN	NOTE 1	NOTE 3	1	CP04AAG06A
3	INSULATOR	NOTE 4	NATURAL	1	SA-003-09-3
2	BODY	NOTE 1	NOTE 2	1	SA-003-09-2-B
1	SHELL	NOTE 1	NOTE 2	1	SA-003-09-1-B

1 2 3 4 5 6 7 8