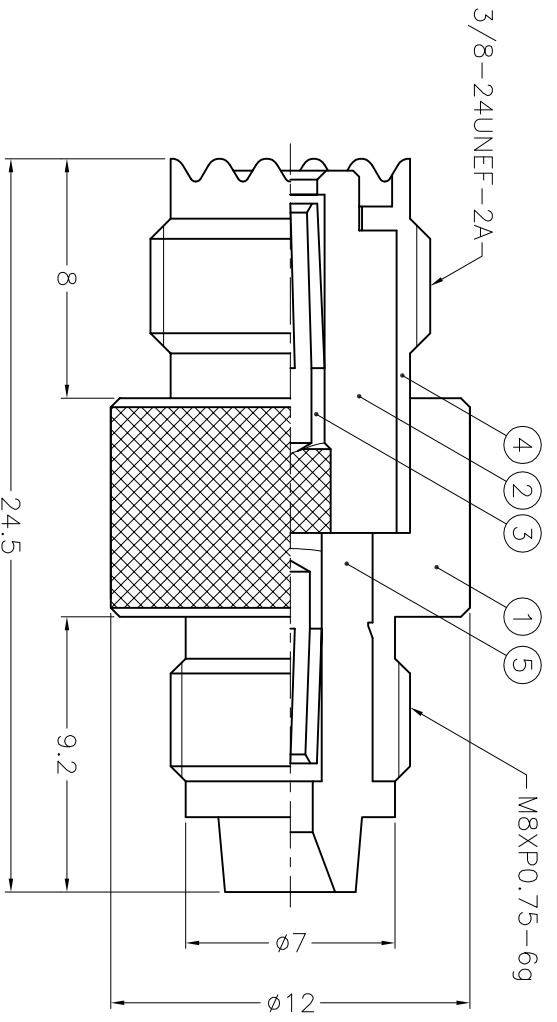


ISS	ZONE	DESCRIPTION\PER REQUEST\DATE

REVISIONS



- NOTES: FINISH (PLATING THICKNESS IN MICRO-INCHES)
1. BRASS PER 00-B-626
  2. PHOSPHOR BRONZE PER 00-B-750
  3. NICKEL PL. 100 MIN. THICK OVER COPPER STRIKE
  4. GOLD PL. 3 MIN. THICK OVER NICKEL PL. 100 MIN. THICK OVER COPPER STRIKE
  5. TEFLON MIL-P-19468

NO.	DESCRIPTION	MATERIAL	FINISH	Q'TY	DRAWING NO.
5	INSULATOR	NOTE 5	NATURAL	1	PT-4000-100-3
4	BODY	NOTE 1	NOTE 3	1	RSA-3450-2
3	CONTACT PIN	NOTE 2	NOTE 4	1	FMEF-MUF-3
2	INSULATOR	NOTE 5	NATURAL	1	FMEF-MUF-2T-50
1	HOUSING	NOTE 1	NOTE 3	1	FMEF-MUF-1

DIMENSIONS ARE IN MILLIMETERS  
UNLESS OTHERWISE SPECIFIED  
TOLERANCES

0.5-6 = ±0.2
6-30 = ±0.4
30-120 = ±0.6
120-315 = ±1
315-1000 = ±1.6
1000-2000 = ±2.4

PART NO.	APPROVED	DATE
	CHECKED	DATE
	DRAWN	DATE

TITLE	DRAWING NO.
FME FEMALE TO MINI-UHF FEMALE ADAPTOR	KU-FMEF-MUF-NT3G-50
TAINAN TAIWAN	FILE NO. F:\DWG\FMEF\MUF\50\NT3G

# Amphenol - Kai Jack

A

B

C

D

E

F

1

2

3

4

5

6

7

8

1

2

3

4

5

6

7

8

A

B

C

D

E

F