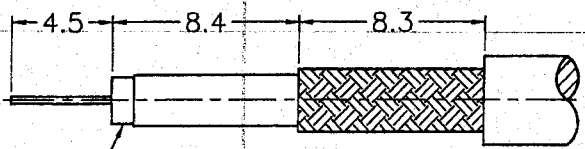


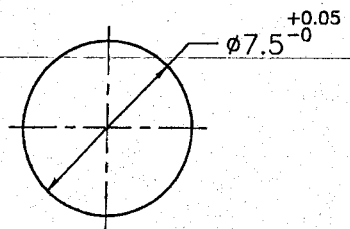
REVISIONS		
ISS	ZONE	DESCRIPTION\PER REQUEST\DATE

SALES



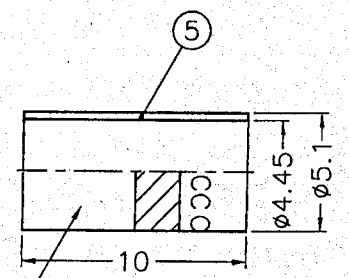
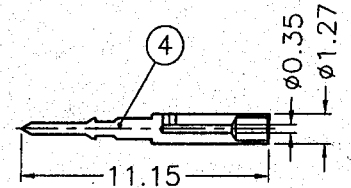
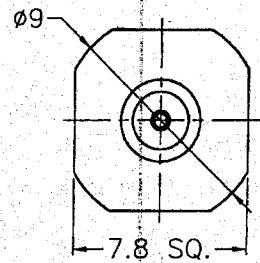
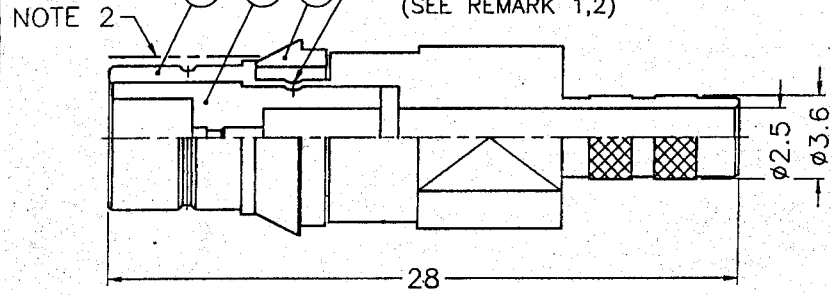
REMOVE FOIL 1mm MIN.
(去除箔機 1mm 以上)

RECOMMENDED
CABLE STRIPPING DIM'S
(建議剝線尺寸)



RECOMMENDED
MOUNTING HOLE
(建議架設孔)

STAKE IN 4 PLACES
EQUALLY SPACED 90° APART
(打四點 間隔 90°)
(SEE REMARK 1,2)



STAMP (APH DATE CODE)
噴字 (製造商及日期)

**THIS DRAWING HAS
APPROVED BY:**

CUSTOMER SIGNATURE
DATE: _____

ISSUED
2001. 11. 21
R&D

- REMARK: 1. NO.2 MUST WITHSTAND A 5 lbs. MIN. PUSHOUT FORCE FROM NO.1 AFTER STAKING OPERATION
2. REMARK 1 IS MAINTAINED BY STAMPING THE FOUR POINTS SHOWN ON THE DRAWING WITHOUT PUNCTURING NO.1
(1. 打四點後零件 2 由零件 1 推出至少必須承受 5 磅推力)
(2. 打四點後除需符合備註 1 要求外 且不可擊穿零件 1)

1. CRIMPED FERRULE
HEX. CRIMP SIZE .178"
2. CONTACT PIN TO SOLDER OR
USE DMC-MH800(GB109) CRIMP TOOL
3. PLUG HDC43/5GTIS
4. MAX. PANEL THICKNESS=5mm
5. CABLES: -BT3002
-TZC75024
-0.3/1.95/3.55

- NOTES: FINISH (PLATING THICKNESS IN MICRO-INCHES)
1. BRASS PER QQ-B-626
2. GOLD PL. 10 MIN. THICK OVER NICKEL PL. 100 MIN. THICK OVER COPPER STRIKE
3. NICKEL PL. 100 MIN. THICK OVER COPPER STRIKE
4. GOLD PL. 30 MIN. THICK OVER NICKEL PL. 100 MIN. THICK OVER COPPER STRIKE
5. TEFLON MIL-P-19468
6. JIS H 3250, C 2700
7. BLUE, PER PANTONE 2945C

DIMENSIONS ARE IN MILLIMETERS			PART NO.
UNLESS OTHERWISE SPECIFIED TOLERANCES			APPROVED: <i>[Signature]</i> DATE 11-16-01'
0.5-6 = ±0.2			CHECKED: <i>[Signature]</i> DATE 11-16-01'
6-30 = ±0.4			DRAWN: <i>[Signature]</i> DATE 11-16-01'
30-120 = ±0.6			FILE NO. F:\DWG\H43\1421B2\5002-75\N10GT30G
120-315 = ±1			
315-1000 = ±1.6			
1000-2000 = ±2.4			

Amphenol - Kai Jack	
TAINAN TAIWAN	
TITLE HDC43 CRIMP PLUG	
DRAWING NO. KJ-H431421B2-N/10GT30G-3002-75	
ITEM NO. 441421AAA32LH7F	

NO.	DESCRIPTION	MATERIAL	FINISH	Q'TY	DRAWING NO.
6	POSITIONER	DELIN	NATURAL	0.05	PT00AAA01A
5	FERRULE	NOTE 6	NOTE 3	1	FR00ABF02A
4	CONTACT PIN	NOTE 1	NOTE 4	1	CP43AAD01A
3	SNAP RING	DELIN	NOTE 7	1	SN44AAA01A
2	INSULATOR	NOTE 5	NATURAL	1	NS43AAB01A
1	BODY	NOTE 1	NOTE 3	1	BD44AAA01A