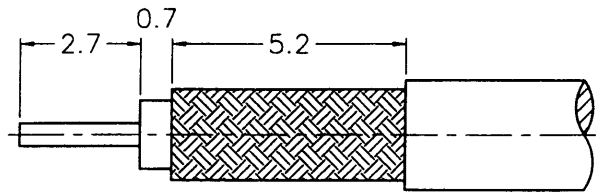


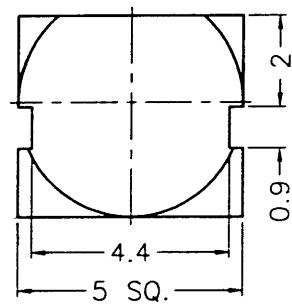
1 2 3 4 5 6 7 8

REVISIONS

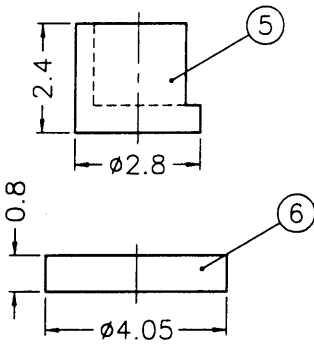
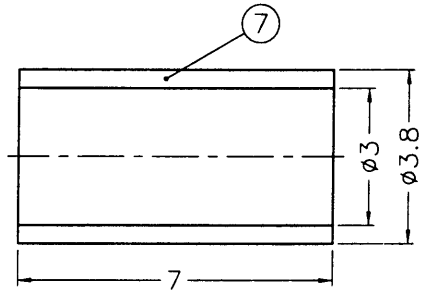
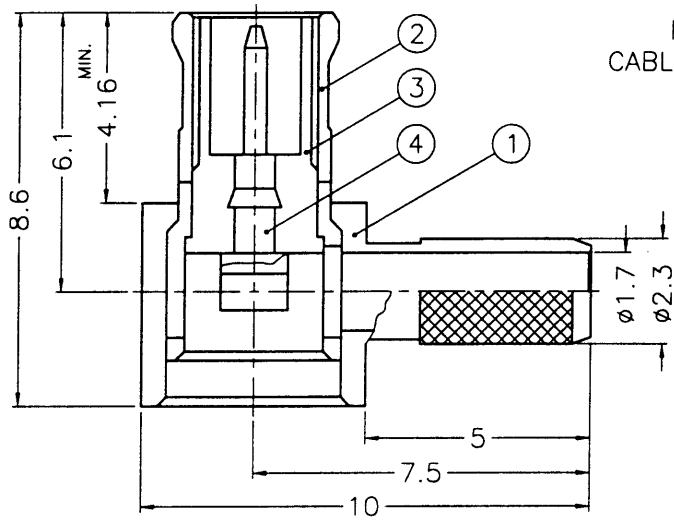
ISS	ZONE	DESCRIPTION\PER REQUEST\DATE
B	A-1	NO.2 WAS CHANGED\RD-DM89011401B\01-14-00'
C	A-1	NO.1 WAS CHANGED\RD-DM89082401Y\08-24-00'
D	A-2	NO.3 WAS CHANGED\RD-DM90091401H\09-24-01'
E	A-1	NO.2 WAS CHANGED\RD-DM91072501L\10-29-02'



SALES



RECOMMENDED
CABLE STRIPPING DIM'S
(建議剝線尺寸)



NOTES: FINISH (PLATING THICKNESS IN MICRO-INCHES)

- 1. BRASS PER QQ-B-626
- 2. BRASS PER QQ-B-613
- 3. GOLD PL. 3 MIN. THICK OVER NICKEL PL. 100 MIN. THICK OVER COPPER STRIKE
- 4. GOLD PL. 30 MIN. THICK OVER COPPER PL. 100 MIN. THICK
- 5. TEFLON MIL-P-19468
- 6. BERYLLIUM COPPER PER QQ-C-530

ISSUED
2002. 11. 01
R&D

- 1. CRIMPED FERRULE
HEX CRIMP SIZE .128"
- 2. CONTACT PIN TO SOLDER

NO.	DESCRIPTION	MATERIAL	FINISH	Q'TY	DRAWING NO.
7	FERRULE	COPPER	NOTE 3	1	FR-38/3X7C
6	COVER	NOTE 2	NOTE 3	1	CV-405X08-T
5	INSULATOR	DELTRIN	NATURAL	1	MCX1112A1-5
4	CONTACT PIN	NOTE 1	NOTE 4	1	MCX1112A1-4
3	INSULATOR	NOTE 5	NATURAL	1	MCX1112A1-3T-50-C
2	BODY	NOTE 6	NOTE 3	1	BD08AAND1F
1	HOUSING	NOTE 1	NOTE 3	1	MCX1112A1-1-23/17-D

DIMENSIONS ARE IN MILLIMETERS				PART NO.	
UNLESS OTHERWISE SPECIFIED TOLERANCES 0.5-6 = ±0.2 6-30 = ±0.4 30-120 = ±0.6 120-315 = ±1 315-1000 = ±1.6 1000-2000 = ±2.4				APPROVED	DATE
				CHECKED	DATE
				DRAWN	DATE
				FILE NO.	F:\DWG\MCX\1112A1\316U-50\3GT30G

Amphenol	
Danbury, CT, USA - Tainan, Taiwan - Shenzhen, China	
TITLE	MCX R/A CRIMP PLUG (FOR RG-174/U, 188A/U, 316/U)
DRAWING NO.	KJ-MCX1112A1-3GT30G-316U-50
ITEM NO.	081112AAA36GE5F

F
E
D
C
B
A

F
E
D
C
B
A

7RD-DR 15971 8