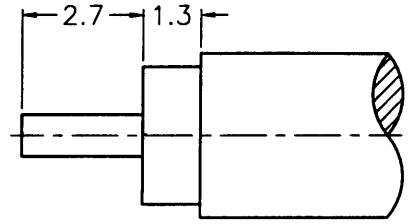
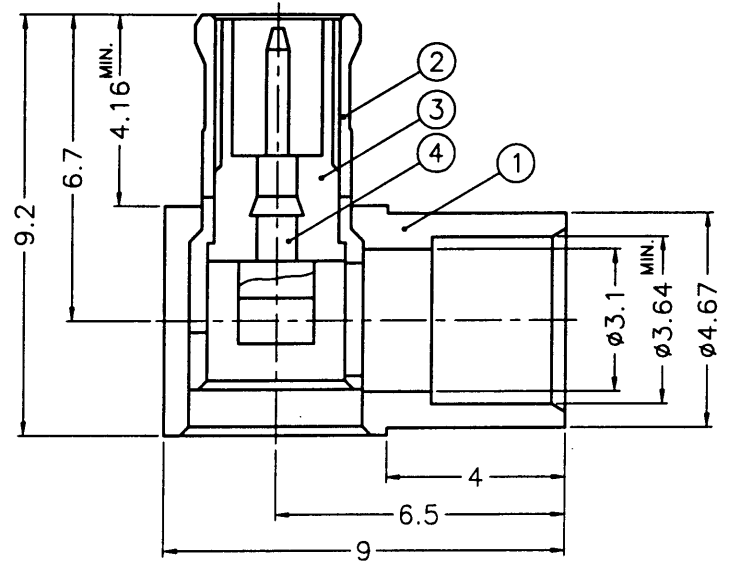
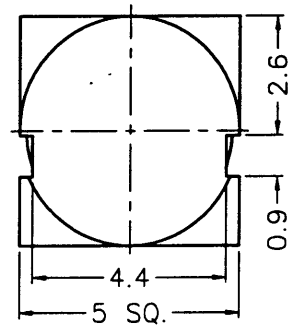
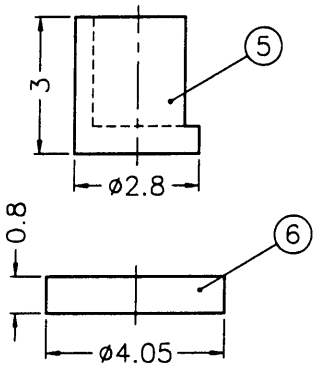


| REVISIONS |      |   |
|-----------|------|---|
| ISS       | ZONE | DESCRIPTION\PER REQUEST\DATE              |
| B         | A-3  | NO.3 WAS CHANGED\N/A\07-11-02'            |
|           |      | NO.2 WAS CHANGED\RD-DM91071101L\07-11-02' |

**SALES**



RECOMMENDED  
CABLE STRIPPING DIM'S  
(建議剝線尺寸)



- NOTES: FINISH (PLATING THICKNESS IN MICRO-INCHES)
- BRASS PER QQ-B-626
  - BRASS PER QQ-B-613
  - GOLD PL. 3 MIN. THICK OVER NICKEL PL. 100 MIN. THICK OVER COPPER STRIKE
  - BERYLLIUM COPPER PER QQ-C-530
  - GOLD PL. 30 MIN. THICK OVER NICKEL PL. 100 MIN. THICK OVER COPPER STRIKE
  - TEFLON MIL-P-19468

ISSUED  
2002. 7. 15  
F&D

1. CONTACT PIN TO SOLDER

| NO. | DESCRIPTION | MATERIAL | FINISH  | Q'TY | DRAWING NO.           |
|-----|-------------|----------|---------|------|-----------------------|
| 6   | COVER       | NOTE 2   | NOTE 3  | 1    | CV-405X08-T           |
| 5   | INSULATOR   | DELTRIN  | NATURAL | 1    | MCX1182A1-5           |
| 4   | CONTACT PIN | NOTE 1   | NOTE 5  | 1    | MCX1112A1-4-17/11     |
| 3   | INSULATOR   | NOTE 6   | NATURAL | 1    | MCX1112A1-3T-50-C     |
| 2   | BODY        | NOTE 4   | NOTE 3  | 1    | MCX1182A1-2-C         |
| 1   | HOUSING     | NOTE 1   | NOTE 3  | 1    | MCX1182A1-1-467/364-B |

| DIMENSIONS ARE IN MILLIMETERS         |                                 | PART NO.     |           |
|---------------------------------------|---------------------------------|--------------|-----------|
| UNLESS OTHERWISE SPECIFIED TOLERANCES |                                 | APPROVED     | DATE      |
| 0.5-6 = ±0.2                          |                                 | <i>Loose</i> | 07-11-02' |
| 6-30 = ±0.4                           |                                 | CHECKED      | DATE      |
| 30-120 = ±0.6                         |                                 | <i>Loose</i> | 07-11-02' |
| 120-315 = ±1                          |                                 | DRAWN        | DATE      |
| 315-1000 = ±1.6                       |                                 | <i>Loose</i> | 07-11-02' |
| 1000-2000 = ±2.4                      |                                 |              |           |
| SCALE                                 | 6/1                             | ISSUE        | B         |
| FILE NO.                              | F:\DWG\MCX\1182A1\141-50\3GT30G |              |           |

| Amphenol - Kai Jack |                             |
|---------------------|-----------------------------|
| TAINAN TAIWAN       |                             |
| TITLE               | MCX R/A DIRECT SOLDER PLUG  |
| DRAWING NO.         | KJ-MCX1182A1-3GT30G-.141-50 |
| ITEM NO.            | 081182AAA42GE5F             |

7RD-DR 1485/8