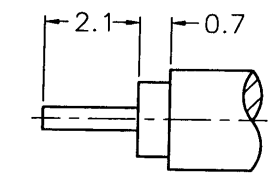
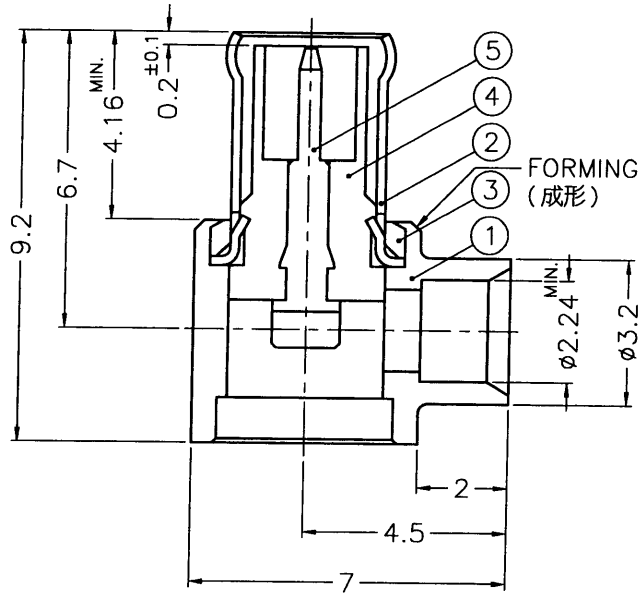
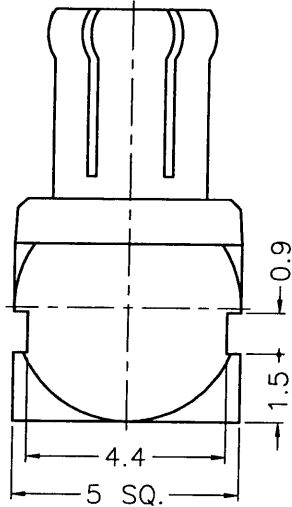
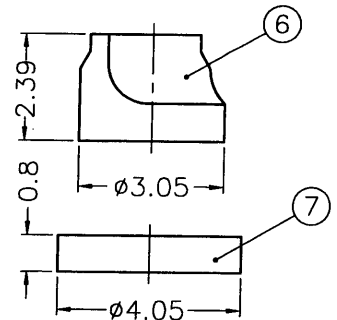


1		2		3		4		5		6		7		8	
REVISIONS															
ISS	ZONE	DESCRIPTION\PER REQUEST\DATE													

SALE



RECOMMENDED  
CABLE STRIPPING DIM'S  
(建議剝線尺寸)



NOTES: FINISH (PLATING THICKNESS IN MICRO-INCHES)

1. BRASS PER QQ-B-626
2. BRASS PER QQ-B-613
3. BERYLLIUM COPPER PER QQ-C-750
4. GOLD PL. 3 MIN. THICK OVER NICKEL PL. 100 MIN. THICK OVER COPPER STRIKE
5. GOLD PL. 30 MIN. THICK OVER NICKEL PL. 100 MIN. THICK OVER COPPER STRIKE
6. TEFLON MIL-P-1946B
7. ZINC DIECAST

ISSUED  
2004 6. 28  
R&D

1. CONTACT PIN TO SOLDER

7 COVER					NOTE 2	NOTE 4	1	CV-405X08-T	DIMENSIONS ARE IN MILLIMETERS				PART NO.		<p style="text-align: center;"><b>Amphenol</b></p> <p style="text-align: center;">Danbury,CT,USA-Tainan,Taiwan-Shenzhen,China</p>			
6 INSULATOR					DELTRIN	NATURAL	1	NS00ADG02A	UNLESS OTHERWISE SPECIFIED TOLERANCES				APPROVED	DATE			<p style="text-align: center;">TITLE MCX R/A DIRECT SOLDER PLUG (FOR .085, .086 CABLE)</p>	
5 CONTACT PIN					NOTE 1	NOTE 5	1	CP08AAB05A	0.5-6 = ±0.2				5/24/H	06-25-04'				
4 INSULATOR					NOTE 6	NATURAL	1	NS08ACF01A	6-30 = ±0.4				CHECKED	DATE				
3 LOCK RING					NOTE 1	NOTE 4	1	LR00AAC17A	30-120 = ±0.6				5/24/H	06-25-04'	<p style="text-align: center;">DRAWING NO. MCX1182A2-3GT30G-.085-50</p>			
2 BODY					NOTE 3	NOTE 4	1	BD08ACP01A	120-315 = ±1				DRAWN	DATE				
1 HOUSING					NOTE 7	NOTE 4	1	HS00ARK01A	315-1000 = ±1.6				Angela	06-25-04'	<p style="text-align: center;">ITEM NO. 081182AAD45GE5F</p>			
NO. DESCRIPTION					MATERIAL	FINISH	Q'TY	DRAWING NO.	1000-2000 = ±2.4				FILE NO. F:\DWG\MCX\1182A2\085-50\3GT30G					

7RD-DR 220158