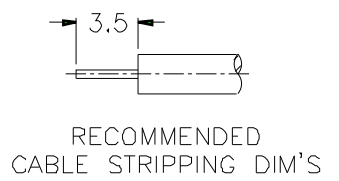
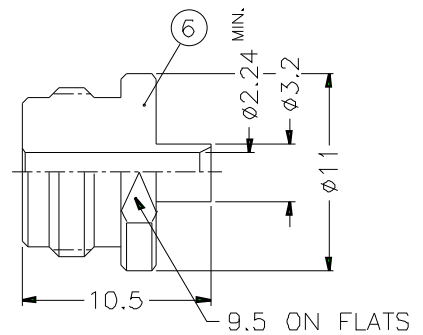
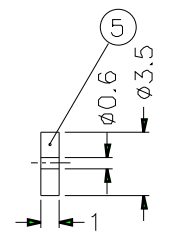
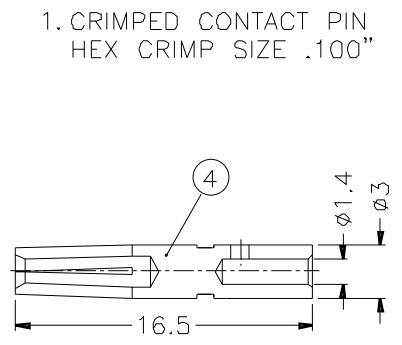
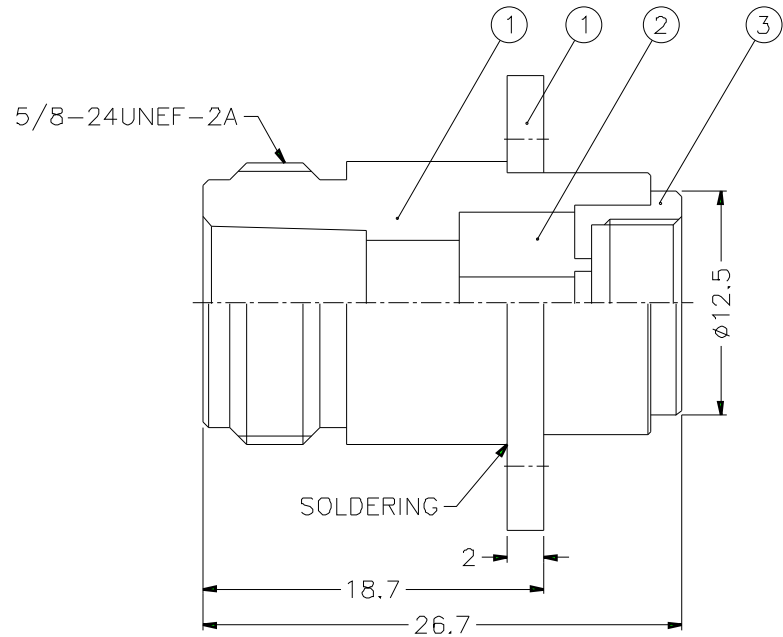
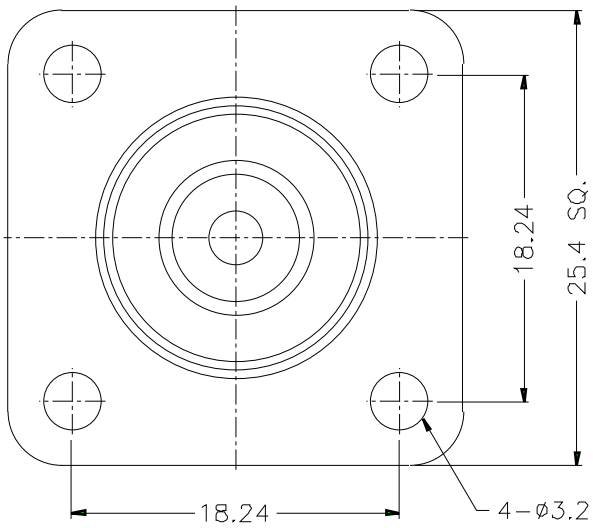


1			2			3			4			5			6			7			8		
REVISIONS																							
ISS	ZONE	DESCRIPTION\PER REQUEST\DATE																					

F
E
D
C
B
A

F
E
D
C
B
A



- NOTES: FINISH (PLATING THICKNESS IN MICRO-INCHES)
1. BRASS PER QQ-B-626
 2. NICKEL PL. 100 MIN. THICK OVER COPPER STRIKE
 3. PHOSPHOR BRONZE PER QQ-B-750
 4. GOLD PL 3 MIN. THICK OVER NICKEL PL. 100 MIN. THICK OVER COPPER STRIKE
 5. TEFLON MIL-P-19468

6	SOLDER NUT	NOTE 1	NOTE 4	1	N6481A2-6-32/224	DIMENSIONS ARE IN MILLIMETERS UNLESS OTHERWISE SPECIFIED TOLERANCES 0.5-6 = ±0.2 6-30 = ±0.4 30-120 = ±0.6 120-315 = ±1 315-1000 = ±1.6 1000-2000 = ±2.4	PART NO. N6581A1-NT3G-11-50		<h1 style="text-align: center;">Amphenol</h1> <p style="text-align: center;">TITLE N PANEL DIRECT SOLDER JACK (FOR .085", .086")</p> <p style="text-align: center;">DRAWING NO. KJ-N6581A1-NT3G-.085-50</p> <p style="text-align: center;">ITEM NO.</p>	
5	INSULATOR	NOTE 5	NATURAL	1	N6481A2-5T-35/06		APPROVED	DATE		
4	CONTACT PIN	NOTE 3	NOTE 4	1	N7000-4-3/14		CHECKED	DATE		
3	INNER BODY	NOTE 1	NOTE 2	1	N6481A2-3		DRAWN	DATE		
2	INSULATOR	NOTE 5	NATURAL	1	N6481A2-2T-50-C					
1	OUTER BODY	NOTE 1	NOTE 2	1	N6581A1-1S-B					
NO.	DESCRIPTION	MATERIAL	FINISH	QTY	DRAWING NO.	SCALE	2.5/1	ISSUE	A	FILE NO.

A

A

1		2		3		4		5		6		7		8	
---	--	---	--	---	--	---	--	---	--	---	--	---	--	---	--