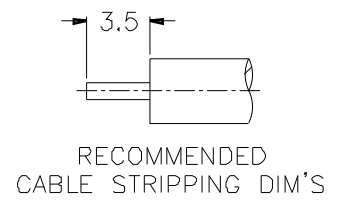
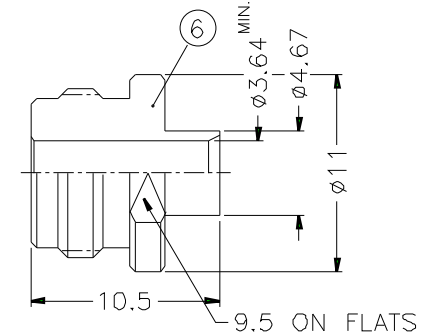
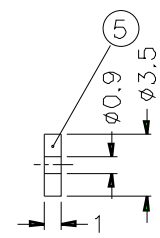
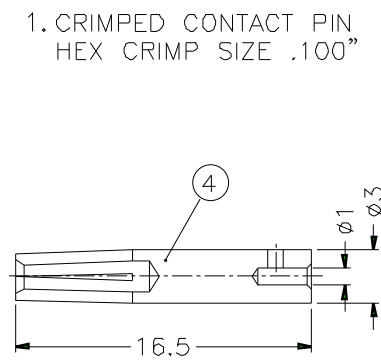
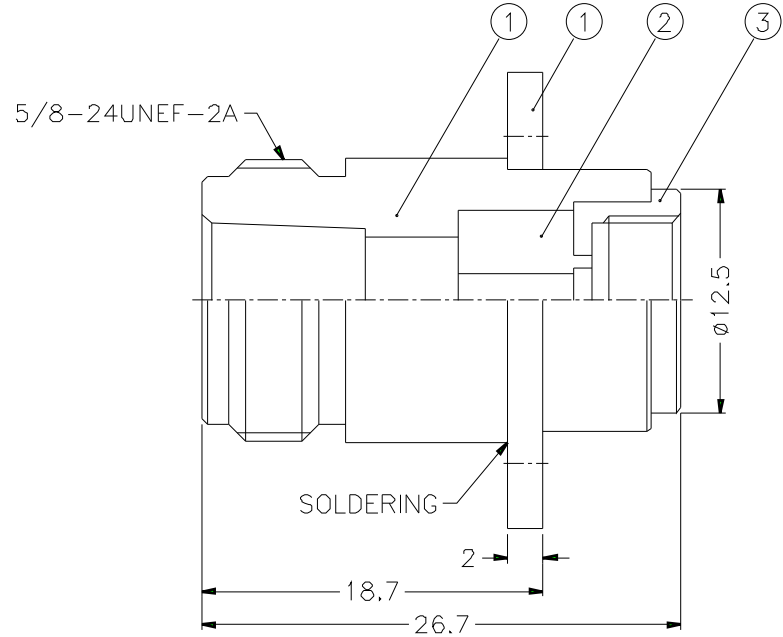
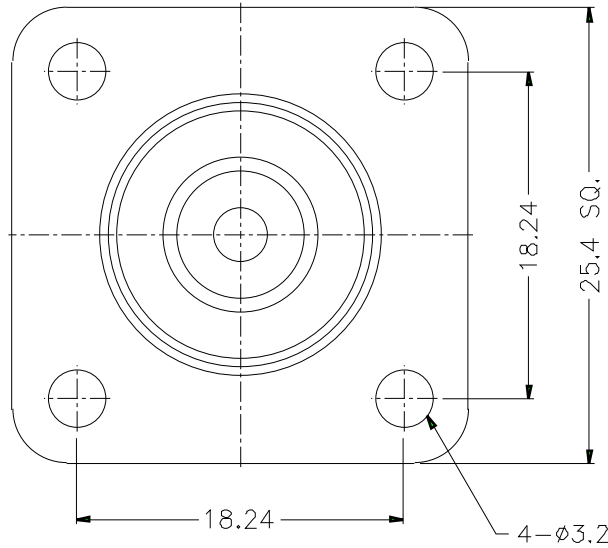


ISS		ZONE		REVISIONS		
				DESCRIPTION	PER REQUEST	DATE



- NOTES: FINISH (PLATING THICKNESS IN MICRO-INCHES)
- BRASS PER QQ-B-626
 - NICKEL PL. 100 MIN. THICK OVER COPPER STRIKE
 - PHOSPHOR BRONZE PER QQ-B-750
 - GOLD PL. 3 MIN. THICK OVER NICKEL PL 100 MIN. THICK OVER COPPER STRIKE
 - TEFLON MIL-P-19468

6	SOLDER NUT	NOTE 1	NOTE 4	1	N6481A2-6-467/364
5	INSULATOR	NOTE 5	NATURAL	1	N6481A2-5T-35/09
4	CONTACT PIN	NOTE 3	NOTE 4	1	N6481A2-4-3/1
3	INNER BODY	NOTE 1	NOTE 2	1	N6481A2-3
2	INSULATOR	NOTE 5	NATURAL	1	N6481A2-2T-50-C
1	OUTER BODY	NOTE 1	NOTE 2	1	N6581A1-1S-B
NO.	DESCRIPTION	MATERIAL	FINISH	Q'TY	DRAWING NO.

DIMENSIONS ARE IN MILLIMETERS				PART NO. N6581A1-NT3G-10-50	
UNLESS OTHERWISE SPECIFIED TOLERANCES				APPROVED	DATE
					10-11-01'
0.5-6 = ±0.2 6-30 = ±0.4 30-120 = ±0.6 120-315 = ±1 315-1000 = ±1.6 1000-2000 = ±2.4				CHECKED	DATE
					10-11-01'
SCALE 3/1 ISSUE A				DRAWN	DATE
					10-11-01'
FILE NO.					

Amphenol	
TITLE N PANEL DIRECT SOLDER JACK	
DRAWING NO. KJ-N6581A1-NT3G-.141-50	
ITEM NO.	