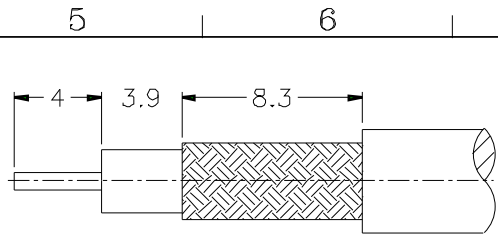
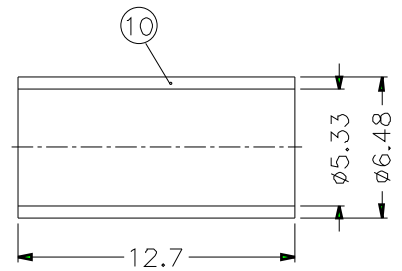
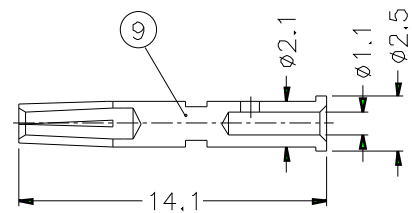
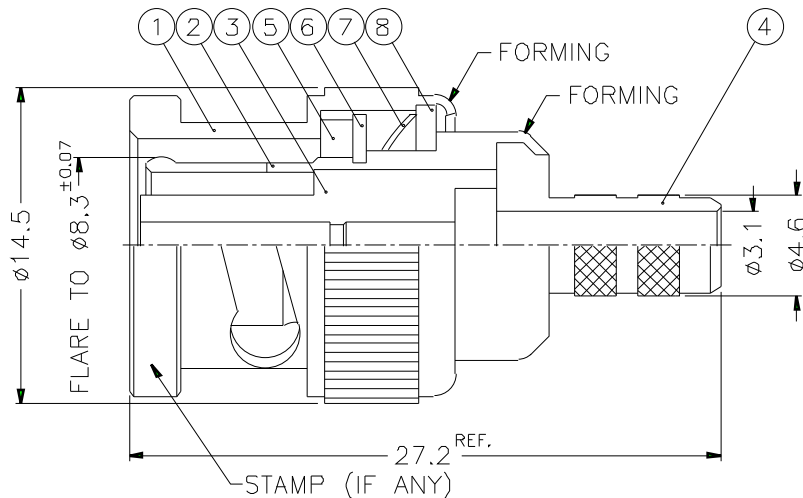


ISS		ZONE		REVISIONS		DESCRIPTION\PER REQUEST\DATE	



RECOMMENDED  
CABLE STRIPPING DIM'S



- NOTES: FINISH (PLATING THICKNESS IN MICRO-INCHES)
- BRASS PER QQ-B-626
  - BRASS PER QQ-B-613
  - NICKEL PL. 100 MIN THICK OVER COPPER STRIKE
  - NICKEL PL. 200 MIN THICK OVER COPPER STRIKE
  - PHOSPHOR BRONZE PER QQ-B-750
  - GOLD PL. 3 MIN. THICK OVER NICKEL PL. 100 MIN. THICK OVER COPPER STRIKE
  - TEFLON MIL-P-19468

- CRIMPED FERRULE  
HEX CRIMP SIZE .213"
- CRIMPED CONTACT PIN  
HEX CRIMP SIZE .068"

10	FERRULE	COPPER	NOTE 3	1	FR-648/533X 127C
9	CONTACT PIN	NOTE 5	NOTE 6	1	B74000-8-25/11
8	WASHER	NOTE 2	NOTE 3	1	WS-128/9X08
7	SPRING	SK5	NOTE 4	1	B50000-6
6	RETAINER RING	NOTE 1	NOTE 3	1	B50000-5
5	GASKET	RUBBER	RED	1	GS-115/8X15
4	BARREL	NOTE 1	NOTE 3	1	B50900-6-46/31
3	INSULATOR	NOTE 7	NATURAL	1	RB1121A1-3T-50
2	BODY	NOTE 1	NOTE 3	1	RB1121A1-2
1	SHELL	NOTE 1	NOTE 3	1	B50000-1-B
NO.	DESCRIPTION	MATERIAL	FINISH	Q'TY	DRAWING NO.

DIMENSIONS ARE IN MILLIMETERS  
UNLESS OTHERWISE SPECIFIED  
TOLERANCES  
0.5-6 = ±0.2  
6-30 = ±0.4  
30-120 = ±0.6  
120-315 = ±1  
315-1000 = ±1.6  
1000-2000 = ±2.4

PART NO.	RB1121A1-NT3G-1-50	
APPROVED	DATE	10-11-01'
CHECKED	DATE	10-11-01'
DRAWN	DATE	10-11-01'
SCALE	3/1	ISSUE
FILE NO.	A	

<b>Amphenol</b>	
TITLE BNC REVERSE POLARITY CRIMP PLUG	
DRAWING NO. KJ-RB1121A1-NT3G-58CU-50	
ITEM NO.	

1	2	3	4	5	6	7	8
---	---	---	---	---	---	---	---