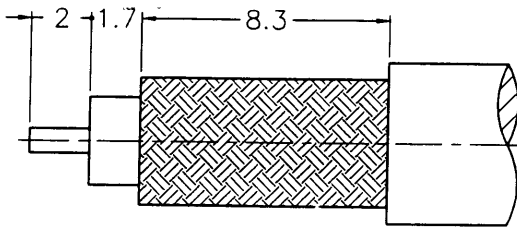
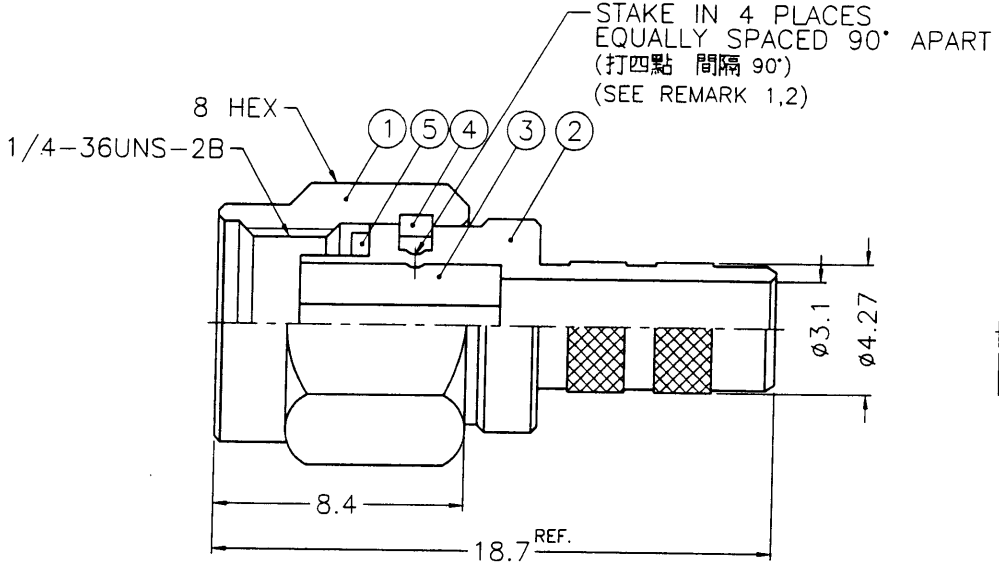
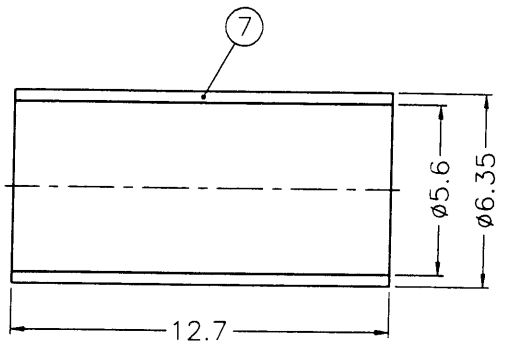
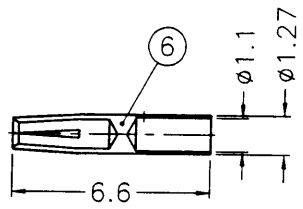


REVISIONS		
ISS	ZONE	DESCRIPTION\PER REQUEST\DATE
B	A-1	NO.3 WAS CHANGED\RD-DM88072902C\07-29-99'
C	A-1	NO.1 WAS CHANGED\RD-DM89042001C\04-20-00'
D	B-1	NO.6 WAS CHANGED\RD-DM89103101Y\10-31-00'

業務部



RECOMMENDED
CABLE STRIPPING DIM'S
(建議剝線尺寸)



- NOTES: FINISH (PLATING THICKNESS IN MICRO-INCHES)
- BRASS PER QQ-B-626
 - GOLD PL. 3 MIN. THICK OVER NICKEL PL. 100 MIN. THICK OVER COPPER STRIKE
 - BERYLLIUM COPPER PER QQ-C-530
 - GOLD PL. 50 MIN. THICK OVER NICKEL PL. 100 MIN. THICK OVER COPPER STRIKE
 - TEFLON MIL-P-19468
 - JIS H 3250, C 2700

- CRIMPED FERRULE
HEX CRIMP SIZE .213"
- CONTACT PIN TO SOLDER

REMARK: 1. NO.3 MUST WITHSTAND A 6 lbs. MIN. PUSHOUT FORCE FROM NO.2 AFTER STAKING OPERATION
2. REMARK1 IS MAINTAINED BY STAMPING THE FOUR POINTS SHOWN ON THE DRAWING WITHOUT PUNCTURING NO.2

- 打四點後零件3由零件2推出至少必須承受6磅推力)
- 打四點後除需符合備註1要求外且不可擊穿零件2)

出圖
2000.11.04
設計部

NO.	DESCRIPTION	MATERIAL	FINISH	Q'TY	DRAWING NO.
7	FERRULE			1	FR-635/56X127
6	CONTACT PIN			1	SMA7081-3-127/11-B
5	GASKET	SILICONE	RED	1	GS-6/43X06
4	RETAINER RING		NATURAL	1	SMA5000-4-B
3	INSULATOR		NATURAL	1	RSMA1111A1-3T-50-B
2	BODY			1	RSMA1111A1-2-427/31
1	SHELL			1	SMA5000-1-C

DIMENSIONS ARE IN MILLIMETERS			
UNLESS OTHERWISE SPECIFIED TOLERANCES	0.5-6	= ±0.2	
	6-30	= ±0.4	
	30-120	= ±0.6	
	120-315	= ±1	
	315-1000	= ±1.6	
	1000-2000	= ±2.4	

PART NO.	
APPROVED	DATE 10-26-00'
CHECKED	DATE 10-26-00'
DRAWN	DATE 10-26-00'

Jack C. Jockey

Amphenol - Kai Jack	
TAINAN TAIWAN	
TITLE	SMA REVERSE POLARITY CRIMP PLUG (FOR RG-55/U, 142A/U, 223/U, 400/U)
DRAWING NO.	KJ-RSMA1111A1-3GT50G-223U-50
FILE NO.	F:\DWG\RSMA\1111A1\223U-50\3GT50G

F
E
D
C
B
A

RD0210926