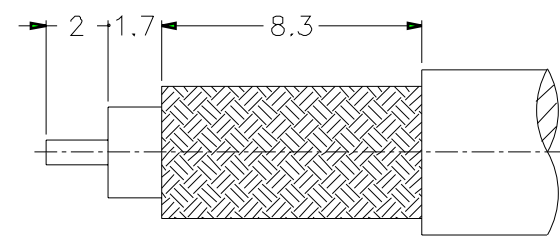
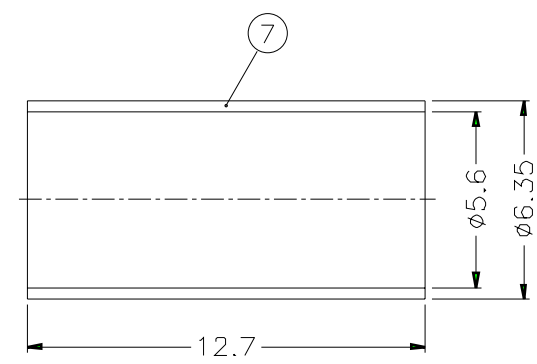
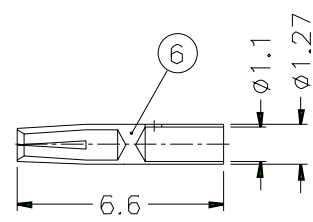
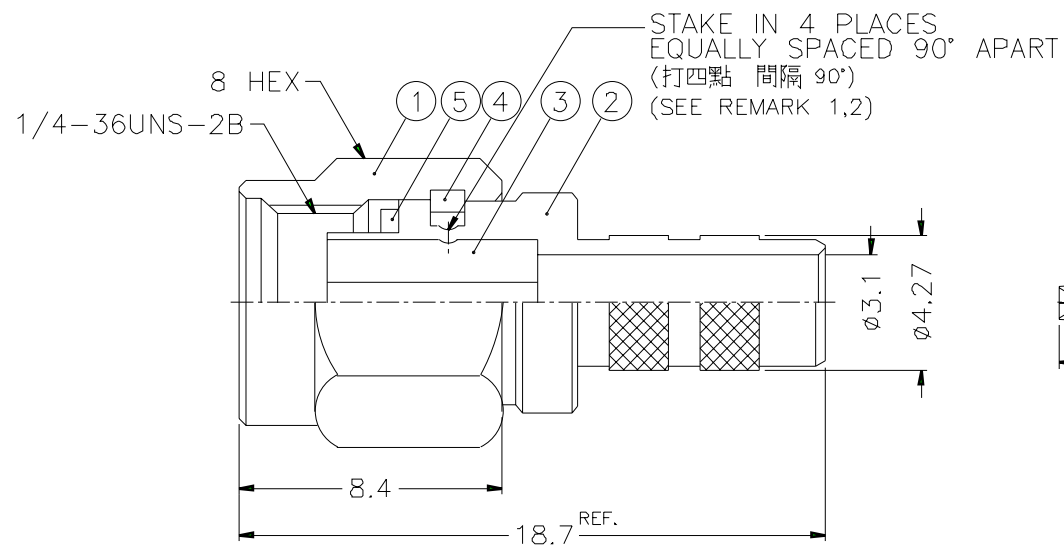


REVISIONS		
ISS	ZONE	DESCRIPTION\PER REQUEST\DATE
B	A-1	NO.3 WAS CHANGED\RD-DM88072902C\07-29-99'
C	A-1	NO.1 WAS CHANGED\RD-DM89042001C\04-20-00'
	B-1	NO.6 WAS CHANGED\RD-DM89103101Y\10-31-00'



RECOMMENDED
CABLE STRIPPING DIM'S
(建議剝線尺寸)



- NOTES: FINISH (PLATING THICKNESS IN MICRO-INCHES)
- BRASS PER QQ-B-626
 - NICKEL PL. 100 MIN. THICK OVER COPPER STRIKE
 - BERYLLIUM COPPER PER QQ-C-530
 - GOLD PL. 50 MIN. THICK OVER NICKEL PL. 100 MIN. THICK OVER COPPER STRIKE
 - TEFLON MIL-P-1946B
 - JIS H 3250, C 2700

- CRIMPED FERRULE
HEX CRIMP SIZE .213"
- CONTACT PIN TO SOLDER

- REMARK: 1. NO.3 MUST WITHSTAND A 6 lbs. MIN. PUSHOUT FORCE FROM NO.1 AFTER STAKING OPERATION
2. REMARK 1 IS MAINTAINED BY STAMPING THE FOUR POINTS SHOWN ON THE DRAWING WITHOUT PUNCTURING NO.1
- (1. 打四點後零件 3 由零件 1 推出至少必須承受 6 磅推力)
(2. 打四點後除需符合備註 1 要求外 且不可擊穿零件 1)

7	FERRULE	NOTE 6	NOTE 2	1	FR-635/56X127
6	CONTACT PIN	NOTE 3	NOTE 4	1	SMA7081-3-127/11-B
5	GASKET	SILICONE	RED	1	GS-6/43X06
4	RETAINER RING	NOTE 3	NATURAL	1	SMA5000-4-B
3	INSULATOR	NOTE 5	NATURAL	1	RSMA1111A1-3T-50-B
2	BODY	NOTE 1	NOTE 2	1	RSMA1111A1-2-427/31
1	SHELL	NOTE 1	NOTE 2	1	SMA5000-1-C
NO.	DESCRIPTION	MATERIAL	FINISH	Q'TY	DRAWING NO.

DIMENSIONS ARE IN MILLIMETERS			
UNLESS OTHERWISE SPECIFIED TOLERANCES			
0.5-6	=	±0.2	
6-30	=	±0.4	
30-120	=	±0.6	
120-315	=	±1	
315-1000	=	±1.6	
1000-2000	=	±2.4	
SCALE	4/1	ISSUE	C

PART NO.	
APPROVED	DATE
CHECKED	DATE
DRAWN	DATE

Amphenol - Kai Jack	
TAINAN TAIWAN	
TITLE	SMA REVERSE POLARITY CRIMP PLUG (FOR RG-55/U, 142A/U, 223/U, 400/U)
DRAWING NO.	KJ-RSMA1111A1-NT50G-223U-50
FILE NO.	F:\DWG\RSMA\1111A1\223U-50\NT50G