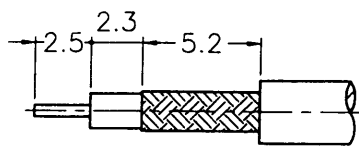
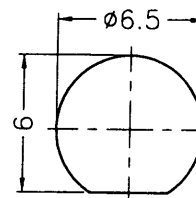


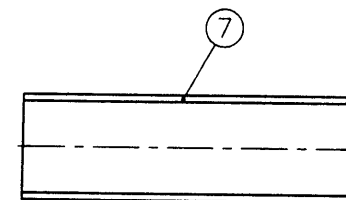
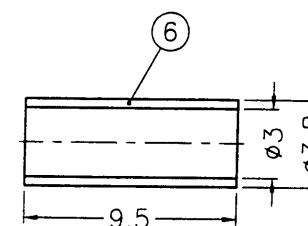
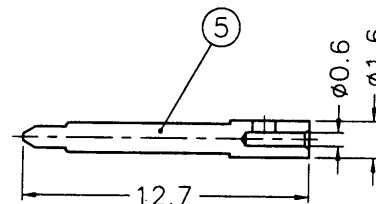
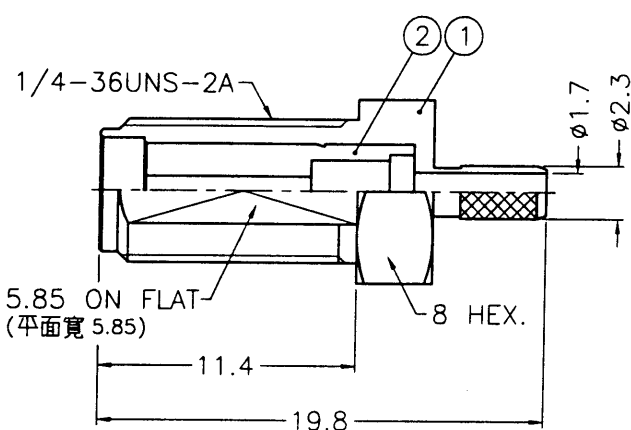
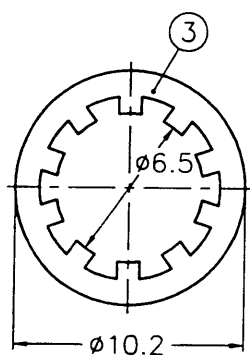
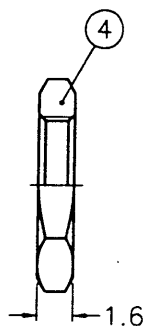
REVISIONS		
ISS	ZONE	DESCRIPTION\PER REQUEST\DATE



RECOMMENDED
CABLE STRIPPING DIM'S
(建議剝線尺寸)



RECOMMENDED
MOUNTING HOLE
(建議架設孔)



NOTES: FINISH (PLATING THICKNESS IN MICRO-INCHES)

1. BRASS PER QQ-B-626
2. BRASS PER QQ-B-613
3. NICKEL PL. 100 MIN. THICK OVER COPPER STRIKE
4. GOLD PL. 50 MIN. THICK OVER NICKEL PL. 100 MIN. THICK OVER COPPER STRIKE
5. TEFLON MIL-P-19468

1. CRIMPED FERRULE
HEX. CRIMP SIZE .128"
2. CRIMPED CONTACT PIN
SQ. CRIMP SIZE .052"
3. MAX. PANEL THICKNESS=3.2mm

NO.	DESCRIPTION	MATERIAL	FINISH	Q'TY	DRAWING NO.
7	HEAT SHRINK TUBING		BLACK	1	HT-46/4X15
6	FERRULE	COPPER	NOTE 3	1	FR-38/3X95C
5	CONTACT PIN	NOTE 1	NOTE 4	1	RSMA6111A2-3-16/06
4	HEX NUT	NOTE 1	NOTE 3	1	HN8-1/4-36X16
3	LOCK WASHER	NOTE 2	NOTE 3	1	LW-102/65X05
2	INSULATOR	NOTE 5	NATURAL	1	SMA7000-2T-50
1	BODY	NOTE 1	NOTE 3	1	SMA6411A2-1-23/17-C

DIMENSIONS ARE IN MILLIMETERS				PART NO.	
UNLESS OTHERWISE SPECIFIED TOLERANCES				APPROVED	DATE
0.5-6	= ±0.2			<i>gawcky</i>	12-09-02'
6-30	= ±0.4			CHECKED	DATE
30-120	= ±0.6			<i>gawcky</i>	12-09-02'
120-315	= ±1			DRAWN	DATE
315-1000	= ±1.6			<i>gawcky</i>	12-09-02'
1000-2000	= ±2.4			FILE NO.	F:\DWG\RSMA\6411A2\316U-50\NT50G

Amphenol	
Danbury,CT,USA-Tainan,Taiwan-Shenzhen,China	
TITLE	SMA REVERSE POLARITY BULKHEAD CRIMP JACK (FOR RG-174/U,188A/U,316/U)
DRAWING NO.	RSMA6411A2-NT50G-316U-50
ITEM NO.	616411AAL36NE5F

F
E
D
C
B
A

F
E
D
C
B
A