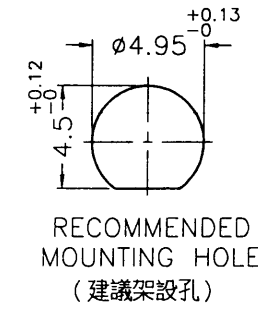
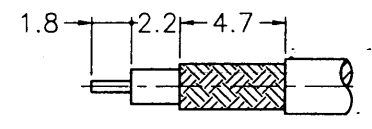
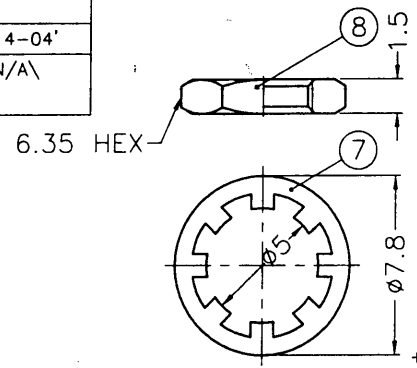


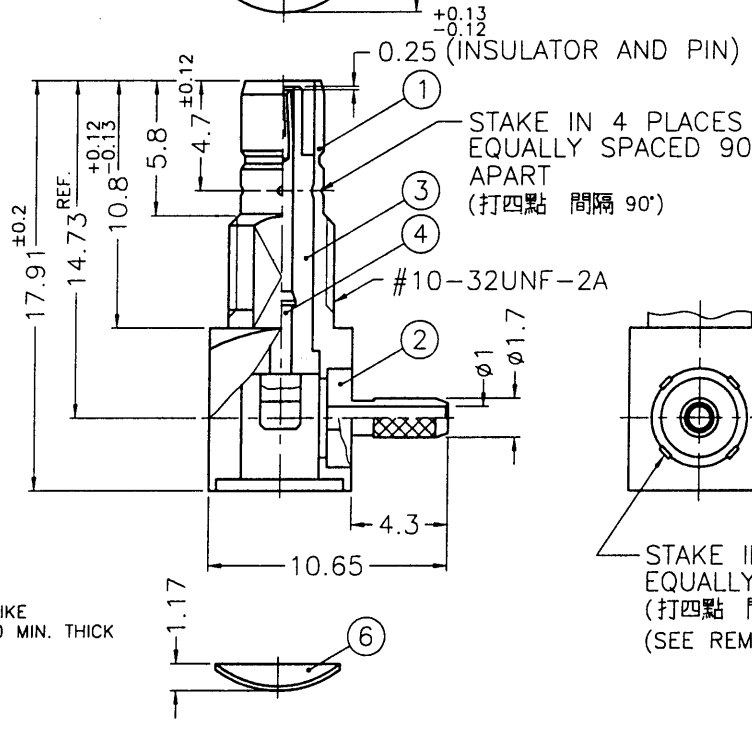
REVISIONS			
ISS	ZONE	DESCRIPTION\PER REQUEST\DATE	
B	A-1	NO.5 WAS CHANGED\RD-DM93011402L\01-14-04'	
B1	B-6	ACCOUNT WAS CHANGED AND 4.3 WAS 4.5\N/A\	
	C-4	02-27-04'	



**SALES**

RECOMMENDED  
CABLE STRIPPING DIM'S  
(建議剝線尺寸)

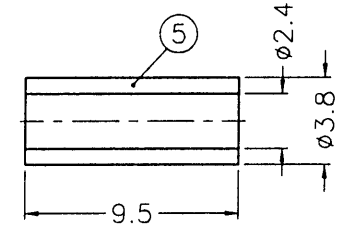
RECOMMENDED  
MOUNTING HOLE  
(建議架設孔)



REMARK:1. NO.2 MUST WITHSTAND A 25 lbs. MIN. PUSHOUT FORCE FROM NO.1 AFTER STAKING OPERATION  
(打四點後零件2由零件1推出至少必須承受25磅推力)

STAKE IN 4 PLACES EQUALLY SPACED 90° APART  
(打四點 間隔 90°)

STAKE IN 4 PLACES EQUALLY SPACED 90° APART  
(打四點 間隔 90°)  
(SEE REMARK 1)



ISSUED  
2004 3.01  
R&D

1. CRIMPED FERRULE  
HEX CRIMP SIZE .128"  
2. CONTACT PIN TO SOLDER

- NOTES: FINISH (PLATING THICKNESS IN MICRO-INCHES)
- BRASS PER QQ-B-626
  - BRASS PER QQ-B-613
  - NICKEL PL. 100 MIN. THICK OVER COPPER STRIKE
  - GOLD PL. 30 MIN. THICK OVER NICKEL PL. 100 MIN. THICK OVER COPPER STRIKE
  - TEFLON MIL-P-19468
  - BERYLLIUM COPPER PER QQ-C-530

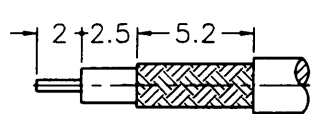
NO.	DESCRIPTION	MATERIAL	FINISH	Q'TY	DRAWING NO.
8	HEX NUT			1	HN635-10-32X15
7	LOCK WASHER			1	LW-78/5X05
6	COVER			1	903-10302
5	FERRULE	COPPER		1	FRO0AAE53A
4	CONTACT PIN			1	CP62AAB02A
3	INSULATOR		NATURAL	1	NS62AAE01A
2	BARREL			1	BR00ANE01A
1	BODY			1	BD62AAC01A

DIMENSIONS ARE IN MILLIMETERS				PART NO.	
UNLESS OTHERWISE SPECIFIED TOLERANCES 0.5-6 = ±0.2 6-30 = ±0.4 30-120 = ±0.6 120-315 = ±1 315-1000 = ±1.6 1000-2000 = ±2.4				APPROVED	DATE
				CHECKED	DATE
				DRAWN	DATE
SCALE	3/1	ISSUE	B1	FILE NO. F:\DWG\RSMB\1412A1\196AU-50\NT30G-B1	

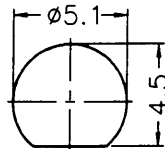
Amphenol	
Danbury,CT,USA-Tainan,Taiwan-Shenzhen,China	
TITLE SMB REVERSE POLARITY R/A BULKHEAD JACK (FOR RG-178B/U, 196A/U)	
DRAWING NO. RSMB1412A1-NT30G-196AU-50	
ITEM NO. 621412AAA16NC5F	

7RD-DR 20588 8

REVISIONS			
ISS	ZONE	DESCRIPTION\PER REQUES\DATE	
C	B-1	DELETED HEAT SHRINK TUBING\RD-DM88102601B\10-26-99'	
D	B-1	NO.5 WAS CHANGED\RD-DM89061501\06-15-00'	
E	E-3	ADDED 0.4 <sup>±0.1</sup> \RD-DM90041801C\04-18-01'	
E1	D-3	RSMB1421A1-001-3T-50 WAS SMB6121B2-3T-50-C\N/A\05-21-01'	



RECOMMENDED  
CABLE STRIPPING DIM'S  
(建議剝線尺寸)

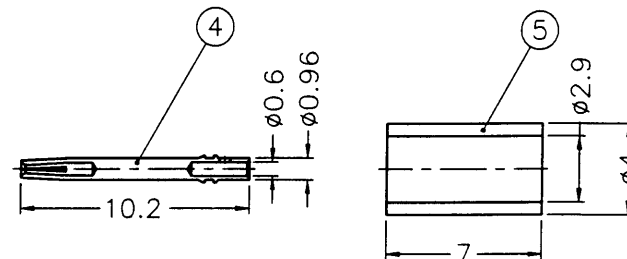
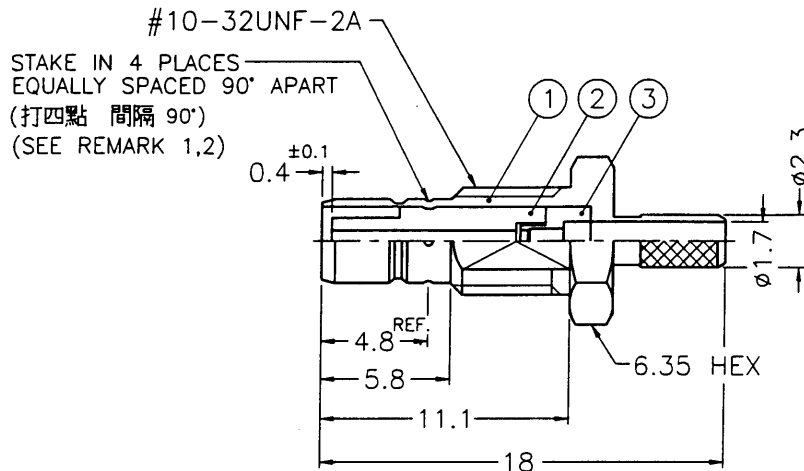
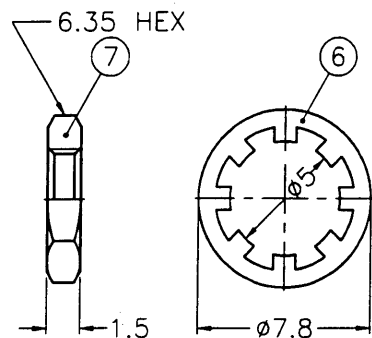


RECOMMENDED  
MOUNTING HOLE  
(建議架設孔)

REMARK:1. NO.2 MUST WITHSTAND A 4 lbs. MIN. PUSHOUT FORCE FROM NO.1 AFTER STAKING OPERATION  
2. REMARK1 IS MAINTAINED BY STAMPING THE FOUR POINTS SHOWN ON THE DRAWING WITHOUT PUNCTURING NO.1

(1. 打四點後零件 2 由零件 1 推出至少必須承受 4 磅推力)  
(2. 打四點後除需符合備註 1 要求外 且不可擊穿零件 1)

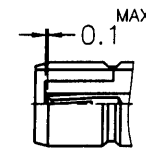
1. CONTACT PIN TO SOLDER  
2. MAX. PANEL THICKNESS=2.4mm



NOTES: FINISH (PLATING THICKNESS IN MICRO-INCHES)

- BRASS PER QQ-B-626
- BRASS PER QQ-B-613
- NICKEL PL. 100 MIN. THICK OVER COPPER STRIKE
- BERYLLIUM COPPER PER QQ-C-530
- GOLD PL. 30 MIN. THICK OVER NICKEL PL. 100 MIN. THICK OVER COPPER STRIKE
- TEFLON MIL-P-19468
- JIS H 3250, C 2700

業務部



CONTACT HEIGHT FLUSH TO 0.1<sup>MAX.</sup> mm FROM INSULATOR, WHEN THE CENTER PIN IS PUSHED INTO LOCKING POSITION.  
(注意事項: 中心針推進卡榫時, 中心針與絕緣體的距離會在 0~0.1mm 之間)

NO.	DESCRIPTION	MATERIAL	FINISH	Q'TY	DRAWING NO.
7	HEX NUT	NOTE 1	NOTE 3	1	HN635-10-32X15
6	LOCK WASHER	NOTE 2	NOTE 3	1	LW-78/5X05
5	FERRULE	NOTE 7	NOTE 3	1	FR-4/29X7
4	CONTACT PIN	NOTE 4	NOTE 5	1	RSMB1421A1-001-4-06-B
3	INSULATOR	NOTE 6	NATURAL	1	RSMB1421A1-001-3T-50
2	INSULATOR	NOTE 6	NATURAL	1	RSMB1421A1-001-2T-50-D
1	BODY	NOTE 1	NOTE 3	1	RSMB1421A1-001-1-23/17-C

DIMENSIONS ARE IN MILLIMETERS				PART NO.	
UNLESS OTHERWISE SPECIFIED TOLERANCES				APPROVED	
0.5-6 = ±0.2				DATE 05-21-01'	
6-30 = ±0.4				CHECKED	
30-120 = ±0.6				DATE 05-21-01'	
120-315 = ±1				DRAWN	
315-1000 = ±1.6				DATE 05-21-01'	
1000-2000 = ±2.4				FILE NO. F:\DWG\RSMB\1421A1\001\316U-50\NT30G	
SCALE	3/1	ISSUE	E1		

Amphenol - Kai Jack

TAINAN TAIWAN

TITLE  
SMB REVERSE POLARITY BULKHEAD CRIMP JACK

DRAWING NO.  
KJ-RSMB1421A1-001-NT30G-316U-50

FILE NO. F:\DWG\RSMB\1421A1\001\316U-50\NT30G

RDBDR/2004