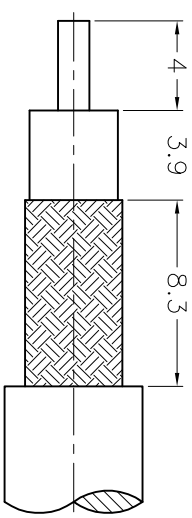
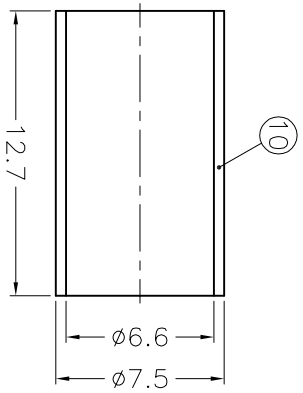
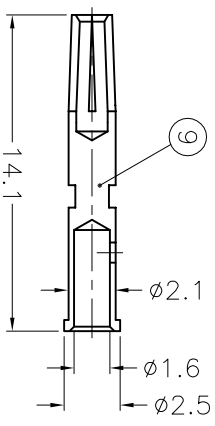
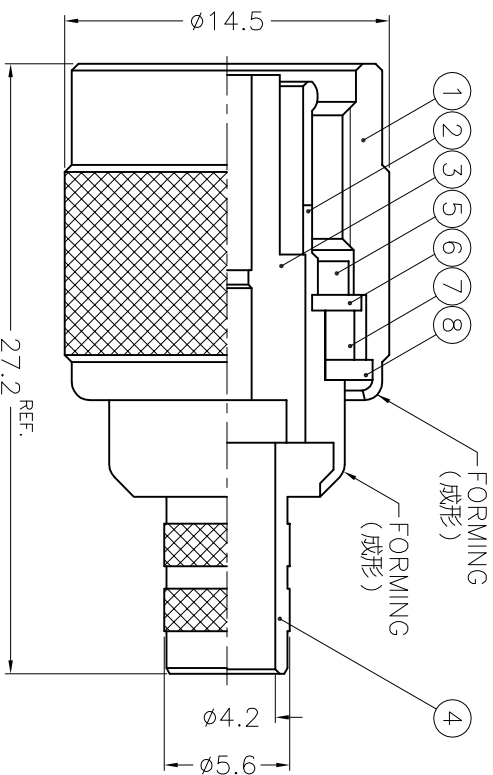


ISS	ZONE	DESCRIPTION \ PER REQUEST \ DATE
-----	------	----------------------------------

REVISIONS



RECOMMENDED  
CABLE STRIPPING DIM'S  
(建議剝線尺寸)



- NOTES: FINISH (PLATING THICKNESS IN MICRO-INCHES)
1. BRASS PER 00-B-626
  2. BRASS PER 00-B-613
  3. NICKEL PL. 100 MIN. THICK OVER COPPER STRIKE
  4. PHOSPHOR BRONZE PER 00-B-750
  5. GOLD PL. 3 MIN. THICK OVER NICKEL PL. 100 MIN. THICK OVER COPPER STRIKE
  6. TEFLON MIL-P-19468
  7. JIS H 3250, C 2700

10	FERRULE	NOTE 7	NOTE 3	1	FR-75/66X127
9	CONTACT PIN	NOTE 4	NOTE 5	1	B74000-8-25/16
8	WASHER	NOTE 2	NOTE 3	1	WS-128/9X08
7	RING	DELFIN	NATURAL	1	T50000-6-A
6	RETAINER RING	NOTE 1	NOTE 3	1	B50000-5
5	GASKET	RUBBER	RED	1	GS-105/8X15
4	BARREL	NOTE 1	NOTE 3	1	B50900-6-56/42
3	INSULATOR	NOTE 6	NATURAL	1	RB1121A1-3T-50
2	BODY	NOTE 1	NOTE 3	1	RB1121A1-2
1	SHELL	NOTE 1	NOTE 3	1	T50000-1-B
NO.	DESCRIPTION	MATERIAL	FINISH	Q'TY	DRAWING NO.

DIMENSIONS ARE IN MILLIMETERS  
UNLESS OTHERWISE SPECIFIED  
TOLERANCES

- 0.5-6 =  $\pm 0.2$
- 6-30 =  $\pm 0.4$
- 30-120 =  $\pm 0.6$
- 120-315 =  $\pm 1$
- 315-1000 =  $\pm 1.6$
- 1000-2000 =  $\pm 2.4$

PART NO.		APPROVED		DATE	
UNLESS OTHERWISE SPECIFIED		CHECKED		DATE	
TOLERANCES		DRAWN		DATE	
0.5-6 = $\pm 0.2$		ADA		11-04-99'	
6-30 = $\pm 0.4$					
30-120 = $\pm 0.6$					
120-315 = $\pm 1$					
315-1000 = $\pm 1.6$					
1000-2000 = $\pm 2.4$					

TITLE		DRAWING NO.	
TNC CRIMP REVERSE PLUG		KJ-RT1121A1-NT3G-8X-50	
TAINAN TAIWAN		FILE NO. F:\DWG\RT\1121A1\8X-50\NT3G	

# Amphenol - Kai Jack

A

B

C

D

E

F

A

B

C

D

E

F