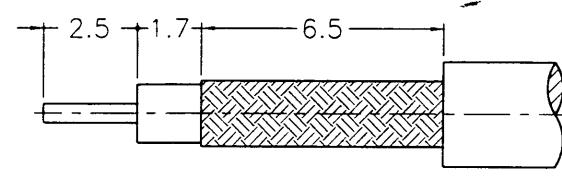


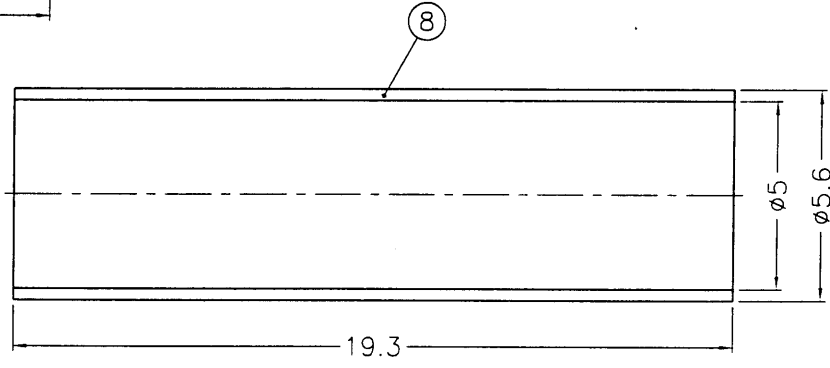
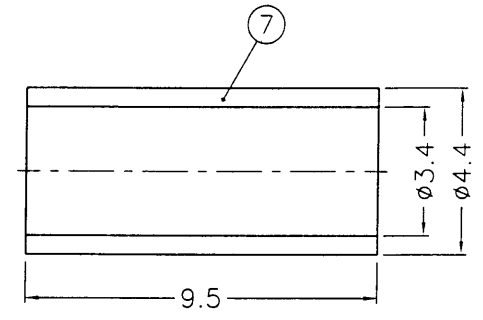
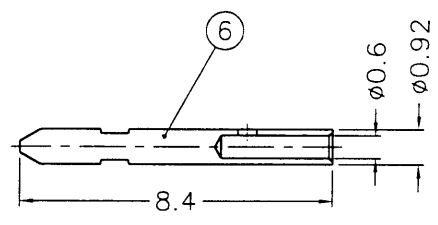
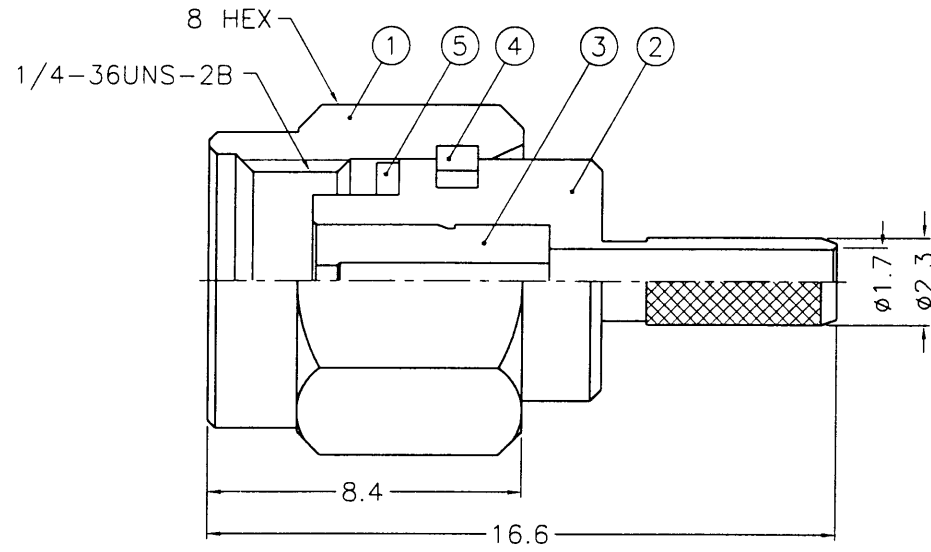
1 2 3 4 5 6 7 8

REVISIONS			
ISS	ZONE	DESCRIPTION\PER REQUEST\DATE	
B	A-1	NO.3 WAS CHANGED\RD-DM88092201B\09-22-99'	

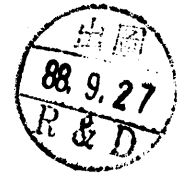


RECOMMENDED
CABLE STRIPPING DIM'S
(建議剝線尺寸)

業務部



- NOTES: FINISH (PLATING THICKNESS IN MICRO-INCHES)
- BRASS PER QQ-B-626
 - GOLD PL. 3 MIN. THICK OVER NICKEL PL. 100 MIN. THICK OVER COPPER STRIKE
 - GOLD PL. 50 MIN. THICK OVER NICKEL PL. 100 MIN. THICK OVER COPPER STRIKE
 - TEFLON MIL-P-19468
 - BERYLLIUM COPPER PER QQ-C-530



1. CRIMPED FERRULE
HEX CRIMP SIZE .151"

8	HEAT SHRINK TUBING			1	HT-56/5X193
7	FERRULE	COPPER	NOTE 2	1	FR-44/34X95C
6	CONTACT PIN	NOTE 1	NOTE 3	1	SMA1111A2-6-092/06
5	GASKET	SILICONE	RED	1	GS-6/43X06
4	RETAINER RING	NOTE 5	NATURAL	1	SMA5000-4-B
3	INSULATOR	NOTE 4	NATURAL	1	SMA1111A2-3T-50-B
2	BODY	NOTE 1	NOTE 2	1	SMA1111A2-2-23/17
1	SHELL	NOTE 1	NOTE 2	1	SMA5000-1-B

DIMENSIONS ARE IN MILLIMETERS		PART NO.	
UNLESS OTHERWISE SPECIFIED TOLERANCES			
0.5-6	= ±0.2	APPROVED	DATE
6-30	= ±0.4	<i>Mark C</i>	09-22-99'
30-120	= ±0.5	CHECKED	DATE
120-315	= ±1	<i>Mark C</i>	09-22-99'
315-1000	= ±1.6	DRAWN	DATE
1000-2000	= ±2.4	<i>Betty L</i>	09-22-99'

Amphenol - Kai Jack	
TAINAN TAIWAN	
TITLE	SMA CRIMP PLUG
DRAWING NO.	KJ-SMA1111A2-3GT50G-316U/D-50
FILE NO.	F:\DWG\SMA\1111A2\316UD-50\3GT50G

F
E
D
C
B
A

F
E
D
C
B
A

SM88R1989

1 2 3 4 5 6 7 8