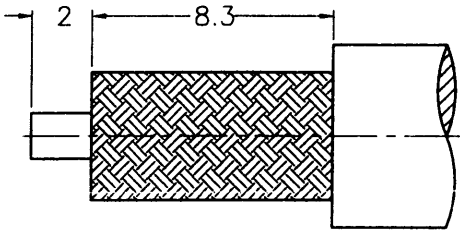


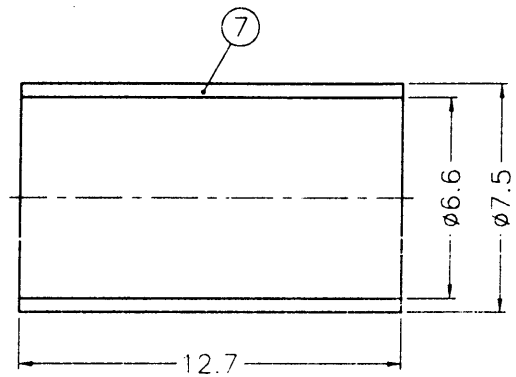
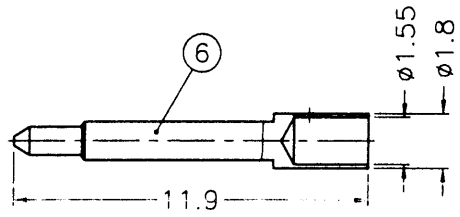
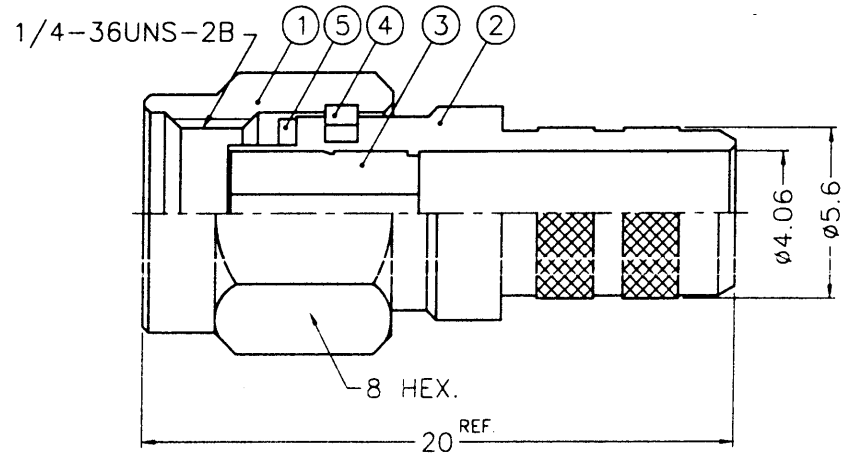
1 2 3 4 5 6 7 8

REVISIONS			
ISS	ZONE	DESCRIPTION\PER REQUEST\DATE	
A	A-7	SMA1111A6-3GT50G-8X-50 WAS SMA87061501-3GT50G\N\A\05-20-02'	



RECOMMENDED  
CABLE STRIPPING DIM'S  
(建議剝線尺寸)

SALES



- NOTES: FINISH (PLATING THICKNESS IN MICRO-INCHES)
- BRASS PER QQ-B-626
  - GOLD PL. 3 MIN. THICK OVER NICKEL PL. 100 MIN. THICK OVER COPPER STRIKE
  - GOLD PL. 50 MIN. THICK OVER NICKEL PL. 100 MIN. THICK OVER COPPER STRIKE
  - TEFLON MIL-P-19468
  - BERYLLIUM COPPER PER QQ-C-530
  - JIS H 3250, C 2600

2002. 5. 21  
R&D

- CRIMPED FERRULE  
HEX. CRIMP SIZE .255"
- CONTACT PIN TO SOLDER

DIMENSIONS ARE IN MILLIMETERS					PART NO.		<b>Amphenol - Kai Jack</b> TAINAN TAIWAN TITLE SMA CRIMP PLUG (FOR RG-8/X, LMR-240) DRAWING NO. KJ-SMA1111A6-3GT50G-8X-50 ITEM NO. 111111AANA1GA5F				
UNLESS OTHERWISE SPECIFIED TOLERANCES					APPROVED	DATE					
7	FERRULE	NOTE 6	NOTE 2	1	FR-75/66X127	<i>gacky</i> <i>gacky</i> <i>gacky</i>			05-20-02'		
6	CONTACT PIN	NOTE 1	NOTE 3	1	RSA-3000-X-6				DATE	05-20-02'	
5	GASKET	SILICONE	RED	1	GS-6/43X06		DATE	05-20-02'			
4	RETAINER RING	NOTE 5	NATURAL	1	SMA5000-4-B		DATE	05-20-02'			
3	INSULATOR	NOTE 4	NATURAL	1	RSA-3000-X-3	DATE	05-20-02'				
2	BODY	NOTE 1	NOTE 2	1	RSA-3000-X-2	DATE	05-20-02'				
1	SHELL	NOTE 1	NOTE 2	1	SMA5000-1-C	DATE	05-20-02'				
NO.	DESCRIPTION	MATERIAL	FINISH	Q'TY	DRAWING NO.	SCALE	4/1	ISSUE	A	FILE NO.	F:\DWG\SMA\1111A6\8X-50\3GT50G

7RD-DR 14490 8

F  
E  
D  
C  
B  
A

F  
E  
D  
C  
B  
A

1

2

3

4

5

6