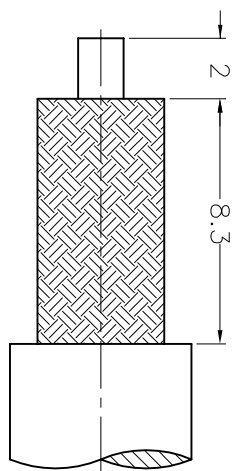
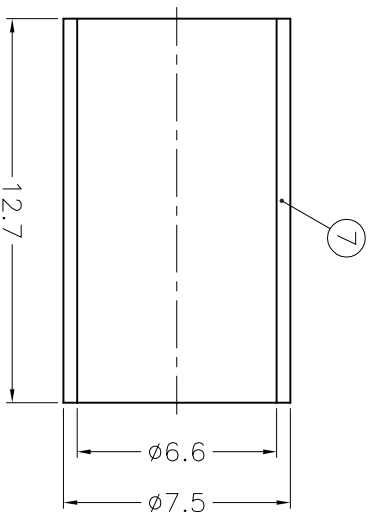
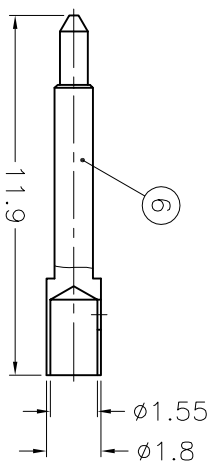
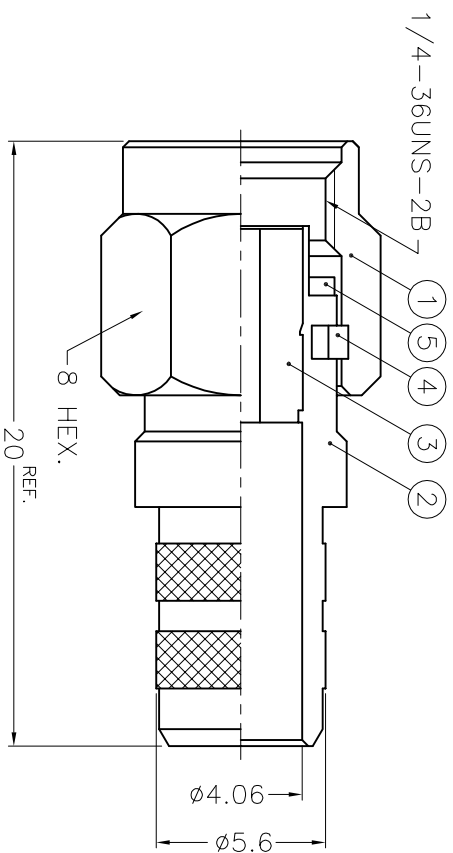


ISS		REVISIONS	
ZONE	DESCRIPTION\PER REQUEST\DATE		
A-7	SMA111A6-NT50G-8X-50 WAS SMA87061501-NT50G \N/A\05-20-02'		



RECOMMENDED
CABLE STRIPPING DIM'S
(建議剝線尺寸)



- NOTES: FINISH (PLATING THICKNESS IN MICRO-INCHES)
1. BRASS PER QQ-B-626
 2. NICKEL PL. 100 MIN. THICK OVER COPPER STRIKE
 3. GOLD PL. 50 MIN. THICK OVER NICKEL PL. 100 MIN. THICK OVER COPPER STRIKE
 4. TEFLON MIL-P-19468
 5. BERYLLIUM COPPER PER QQ-C-530
 6. JIS H 3250, C 2600

1. CRIMPED FERRULE
HEX. CRIMP SIZE .255"
2. CONTACT PIN TO SOLDER

NO.	DESCRIPTION	MATERIAL	FINISH	Q'TY	DRAWING NO.
7	FERRULE	NOTE 6	NOTE 2	1	FR-75/66X127
6	CONTACT PIN	NOTE 1	NOTE 3	1	RSA-3000-X-6
5	GASKET	SILICONE	RED	1	GS-6/43X06
4	RETAINER RING	NOTE 5	NATURAL	1	SMA5000-4-B
3	INSULATOR	NOTE 4	NATURAL	1	RSA-3000-X-3
2	BODY	NOTE 1	NOTE 2	1	RSA-3000-X-2
1	SHELL	NOTE 1	NOTE 2	1	SMA5000-1-C

DIMENSIONS ARE IN MILLIMETERS	
UNLESS OTHERWISE SPECIFIED	
TOLERANCES	
0.5-6 = ±0.2	
6-30 = ±0.4	
30-120 = ±0.6	
120-315 = ±1	
315-1000 = ±1.6	
1000-2000 = ±2.4	

PART NO.	
APPROVED	DATE
CHECKED	DATE
DRAWN	DATE

TITLE	
SMA CRIMP PLUG (FOR RG-8/X, LMR-240)	
DRAWING NO.	
ITEM NO.	111111AANA1NE5F

Amphenol - Kai Jack
TAINAN TAIWAN