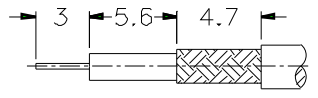
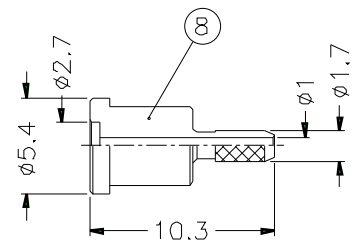
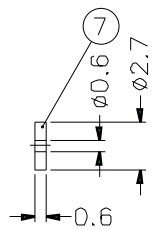
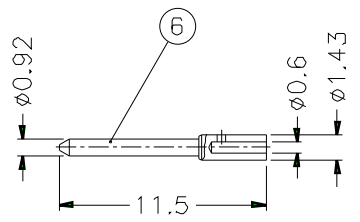
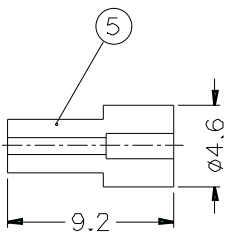
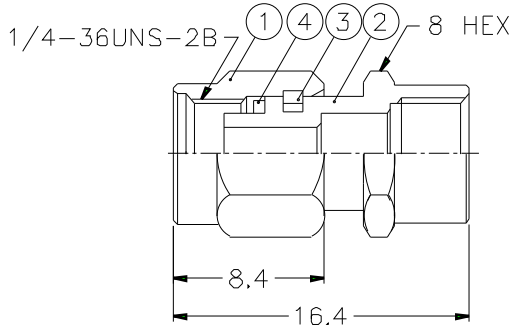


1 2 3 4 5 6 7 8

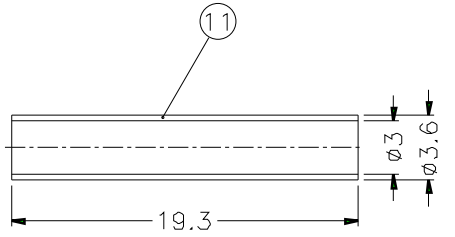
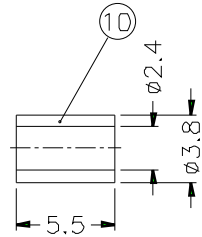
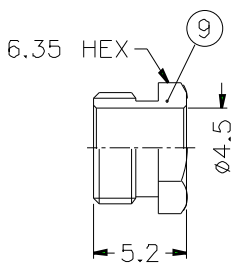
REVISIONS		
ISS	ZONE	DESCRIPTION\PER REQUEST\DATE



RECOMMENDED
CABLE STRIPPING DIM'S



- NOTES: FINISH (PLATING THICKNESS IN MICRO-INCHES)
1. BRASS PER QQ-B-626
 2. BERYLLIUM COPPER PER QQ-C-530
 3. TEFLON MIL-P-19468
 4. GOLD PL. 3 MIN. THICK OVER NICKEL PL. 100 MIN. THICK OVER COPPER STRIKE
 5. GOLD PL. 50 MIN. THICK OVER NICKEL PL. 100 MIN. THICK OVER COPPER STRIKE



1. CRIMPED FERRULE
HEX CRIMP SIZE .128"
2. CONTACT PIN TO SOLDER

11	HEAT SHRINK TUBING			1	HT-36/3X193
10	FERRULE	COPPER	NOTE 4	1	FR-38/24X55C
9	HEX NUT	NOTE 1	NOTE 4	1	SMA5003-9-635/45
8	BARREL	NOTE 1	NOTE 4	1	SMA1111G2-8-17/1
7	INSULATOR	NOTE 3	NATURAL	1	SMA1111G2-7
6	CONTACT PIN	NOTE 1	NOTE 5	1	SMA1111G2-6-143/06
5	INSULATOR	NOTE 3	NATURAL	1	SMA1111G2-5
4	GASKET	SILICONE	RED	1	GS-6/43X06
3	RETAINER RING	NOTE 2	NATURAL	1	SMA5000-4-B
2	BODY	NOTE 1	NOTE 4	1	SMA5003-2-A
1	SHELL	NOTE 1	NOTE 4	1	SMA5000-1-B
NO.	DESCRIPTION	MATERIAL	FINISH	Q'TY	DRAWING NO.

DIMENSIONS ARE IN MILLIMETERS
UNLESS OTHERWISE SPECIFIED TOLERANCES
0.5-6 = ±0.2
6-30 = ±0.4
30-120 = ±0.6
120-315 = ±1
315-1000 = ±1.6
1000-2000 = ±2.4

PART NO.	SMA1111G2-3GT50G-14-50
APPROVED	DATE 10-11-01'
CHECKED	DATE 10-11-01'
DRAWN	DATE 10-11-01'
SCALE	2.5/1
ISSUE	A
FILE NO.	

Amphenol	
TITLE	SMA CRIMP PLUG (FOR RG-178B/U,196A/U)
DRAWING NO.	KJ-SMA1111G2-3GT50G-196AU-50
ITEM NO.	

1 2 3 4 5 6 7 8

F

F

E

E

D

D

C

C

B

B

A

A