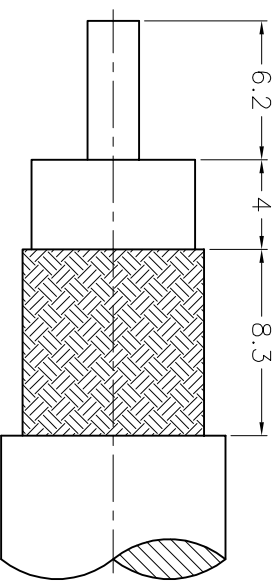
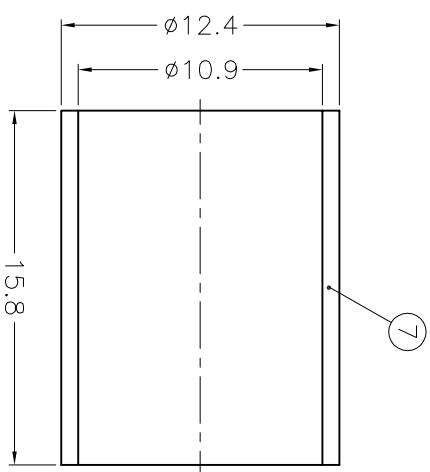
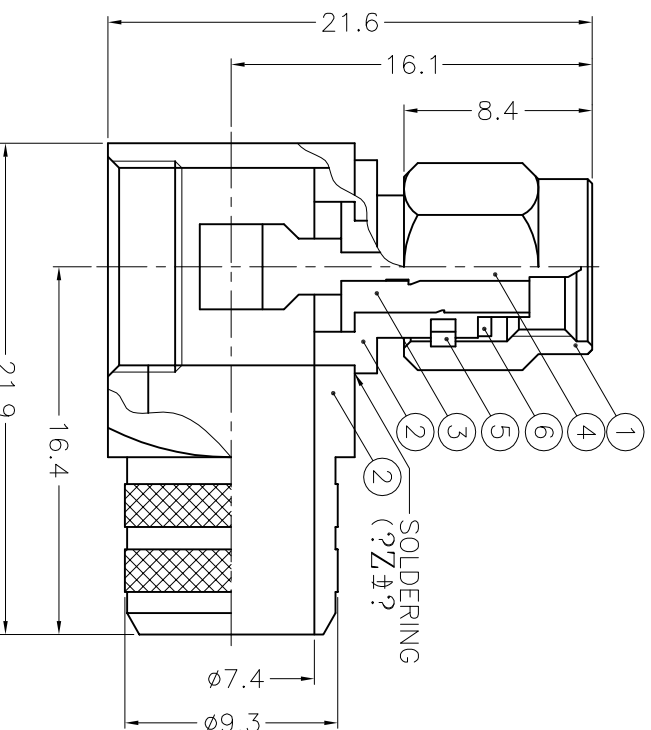


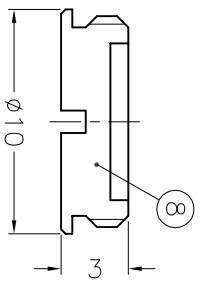
ISS	ZONE	REVISIONS	DESCRIPTION \ PER REQUEST \ DATE
-----	------	-----------	----------------------------------



RECOMMENDED
CABLE STRIPPING DIM'S
(«0A3-e½u?0?o



- NOTES: FINISH (PLATING THICKNESS IN MICRO-INCHES)
1. BRASS PER QQ-B-626
 2. NICKEL PL. 100 MIN. THICK OVER COPPER STRIKE
 3. BERYLLIUM COPPER PER QQ-C-530
 4. GOLD PL. 50 MIN. THICK OVER NICKEL PL. 100 MIN. THICK
 5. OVER COPPER STRIKE
 6. TEFLON MIL-P-19468
 6. JIS H 3250, C 2700



1. CRIMPED FERRULE
HEX CRIMP SIZE .429"
2. CONTACT PIN TO SOLDER

8	COVER	NOTE 1	NOTE 2	1	B1112A4-10
7	FERRULE	NOTE 6	NOTE 2	1	FR-124/109X158
6	GASKET	SILICONE	RED	1	GS-6/43X06
5	RETAINER RING	NOTE 3	NATURAL	1	SMA5000-4-B
4	CONTACT PIN	NOTE 1	NOTE 4	1	SMA1112A9-4-38/ 29
3	INSULATOR	NOTE 5	NATURAL	1	RSA-3010-X-3
2	HOUSING WITH BARREL	NOTE 1	NOTE 2	1	SMA1112A9-2S-93/74
1	SHELL	NOTE 1	NOTE 2	1	SMA5000-1-C

DIMENSIONS ARE IN MILLIMETERS
UNLESS OTHERWISE SPECIFIED
TOLERANCES
0.5-6 = ±0.2
6-30 = ±0.4
30-120 = ±0.6
120-315 = ±1
315-1000 = ±1.6
1000-2000 = ±2.4

PART NO.		DATE	
APPROVED		03-15-01'	
CHECKED		03-15-01'	
DRAWN	SHALY	DATE	03-15-01'

Amphenol - Kai Jack
TAINAN TAIWAN

TITLE
SMA R/A CRIMP PLUG
(FOR BELDEN 9913, 9914, TIMES LMR-400 CABLE)

DRAWING NO.
KJ-SMA1112A9-NT50G-9913-50

FILE NO. F:\DWG\SMA\1112A9\9913\50\NT50G

A B C D E F

A B C D E F