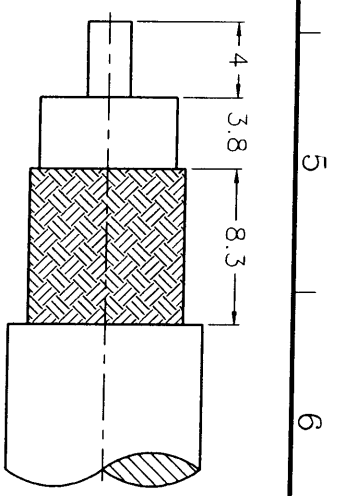
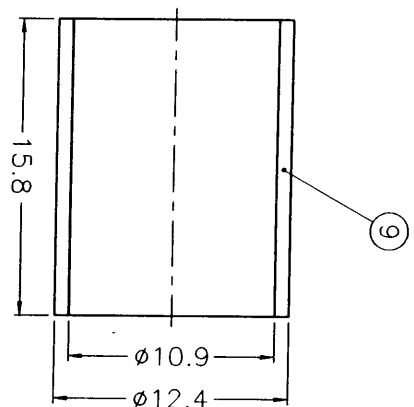
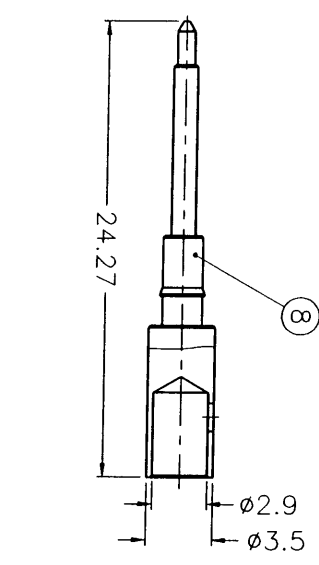
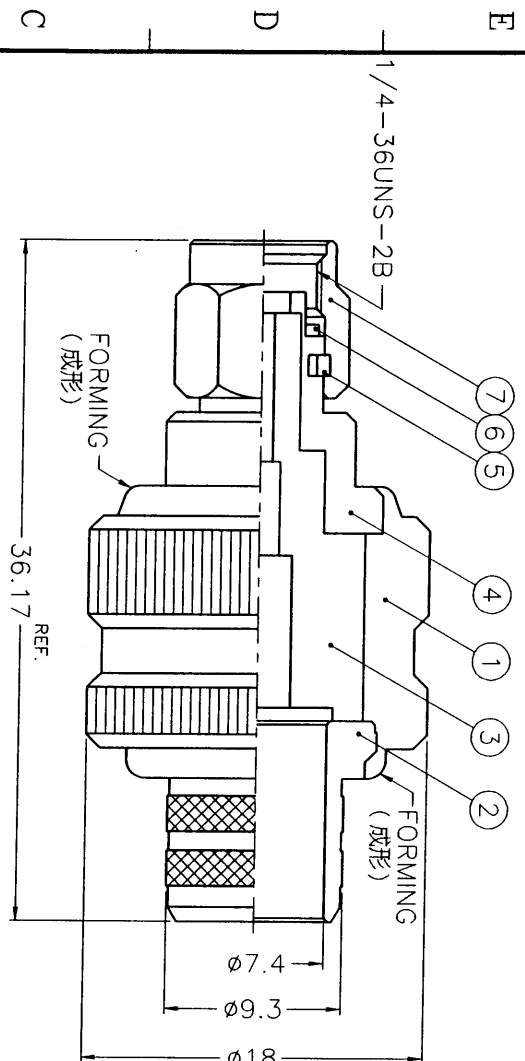


| ISS ZONE | DESCRIPTION \ PER REQUEST \ DATE |
|----------|----------------------------------|
| | |



RECOMMENDED
CABLE STRIPPING DIM'S
(建議剝線尺寸)

業務部



- NOTES: FINISH (PLATING THICKNESS IN MICRO-INCHES)
- BRASS PER QQ-B-626
 - NICKEL PL. 100 MIN. THICK OVER COPPER STRIKE
 - BERYLLIUM COPPER PER QQ-C-530
 - GOLD PL. 50 MIN. THICK OVER NICKEL PL. 100 MIN. THICK OVER COPPER STRIKE
 - TEFLON MIL-P-19468
 - JIS H 3250, C 2700

- CRIMPED FERRULE
HEX CRIMP SIZE .429"
- CRIMPED CONTACT PIN
HEX CRIMP SIZE .118"

89.2.16

| | | | | | |
|---|---------------|----------|---------|---|-------------------|
| 9 | FERRULE | NOTE 6 | NOTE 2 | 1 | FR-124/109X158 |
| 8 | CONTACT PIN | NOTE 1 | NOTE 4 | 1 | SMA1121A1-8-35/29 |
| 7 | SHELL | NOTE 1 | NOTE 2 | 1 | SMA5000-1-B |
| 6 | GASKET | SILICONE | RED | 1 | GS-6/43X06 |
| 5 | RETAINER RING | NOTE 3 | NATURAL | 1 | SMA5000-4-B |
| 4 | BODY | NOTE 1 | NOTE 2 | 1 | SMA1121A2-4 |
| 3 | INSULATOR | NOTE 5 | NATURAL | 1 | SMA1121A2-3I-50 |
| 2 | BARREL | NOTE 1 | NOTE 2 | 1 | N5000-3-93/74 |
| 1 | HOUSING | NOTE 1 | NOTE 2 | 1 | SMA1121A1-1 |

| | |
|---------------------------------------|--------|
| DIMENSIONS ARE IN MILLIMETERS | |
| UNLESS OTHERWISE SPECIFIED TOLERANCES | |
| 0.5-6 | = ±0.2 |
| 6-30 | = ±0.4 |
| 30-120 | = ±0.6 |
| 120-315 | = ±1 |
| 315-1000 | = ±1.6 |
| 1000-2000 | = ±2.4 |

| | |
|----------|---------------------------------|
| PART NO. | |
| APPROVED | <i>A. K. C.</i> DATE 02-01-00' |
| CHECKED | <i>Carol. N.</i> DATE 02-01-00' |
| DRAWN | <i>Alex. H.</i> DATE 02-01-00' |

| | |
|--|---------------------------------|
| TITLE | Amphenol - Kai Jack |
| TAINAN TAIWAN | |
| SMA CRIMP PLUG (FOR BELDEN 9913, 9914, LMR-400) | |
| DRAWING NO. | KJ-SMA1121A2-NT50G-9913-50 |
| FILE NO. | F:\DWG\SMA\1121A2\9913-50\NT50G |

1 2 3 4 5 6 7 8 144