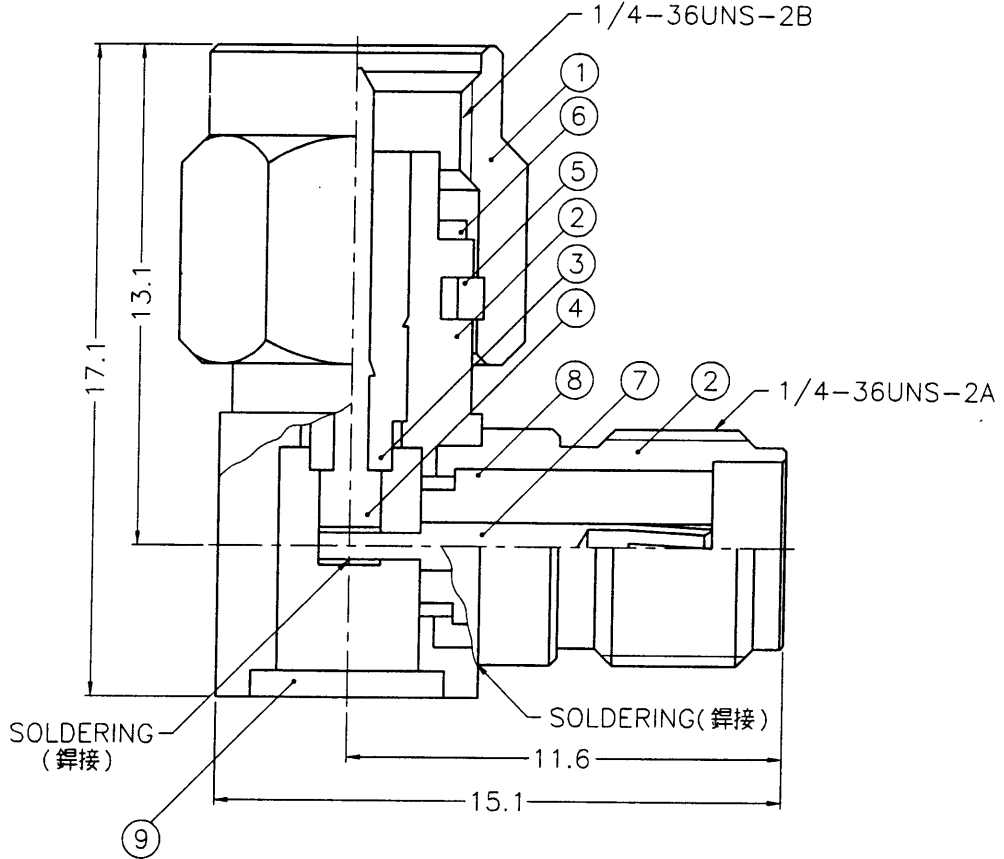


業務部

REVISIONS		
ISS	ZONE	DESCRIPTION\PER REQUEST\DATE
B	A-1	NO.1 WAS CHANGED\RD-DM89042001C\04-20-00'



NOTES: FINISH (PLATING THICKNESS IN MICRO-INCHES)

1. BRASS PER QQ-B-626
2. BRASS PER QQ-B-613
3. GOLD PL. 3 MIN. THICK OVER NICKEL PL. 100 MIN. THICK OVER COPPER STRIKE
4. BERYLLIUM COPPER PER QQ-C-530
5. GOLD PL. 50 MIN. THICK OVER NICKEL PL. 100 MIN. THICK OVER COPPER STRIKE
6. TEFLON MIL-P-19468

89.5.03  
設計部

NO.	DESCRIPTION	MATERIAL	FINISH	Q'TY	DRAWING NO.
9	COVER			1	CV-523X06-T
8	INSULATOR			1	SMA5072A2-9T-50
7	CONTACT PIN			1	SMA5990-8
6	GASKET	SILICONE	RED	1	GS-6/43X06
5	RETAINER RING			1	SMA5000-4-B
4	CONTACT PIN			1	SMA1112A4-4-B
3	INSULATOR			1	SMA1112A3-3T-50
2	HOUSING WITH BODY			1	SMA5072A2-2S-B
1	SHELL			1	SMA5000-1-C

DIMENSIONS ARE IN MILLIMETERS  
UNLESS OTHERWISE SPECIFIED TOLERANCES

0.5-6 = ±0.2  
6-30 = ±0.4  
30-120 = ±0.6  
120-315 = ±1  
315-1000 = ±1.6  
1000-2000 = ±2.4

PART NO.	
APPROVED	<i>Andy C</i> DATE 05-03-00'
CHECKED	<i>Andy C</i> DATE 05-03-00'
DRAWN	<i>Joyce Y</i> DATE 05-03-00'

<b>Amphenol - Kai Jack</b> TAINAN TAIWAN	
TITLE SMA MALE TO FEMALE R/A ADAPTOR	
DRAWING NO. KJ-SMA5072A2-3GT50G-50	
FILE NO.	F:\DWG\SA\5072A2\50\3GT50G