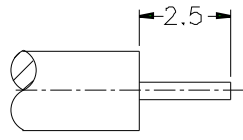
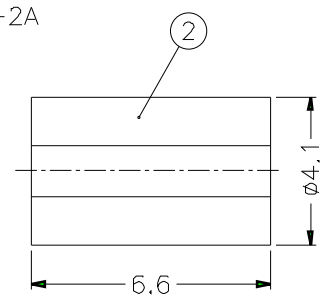
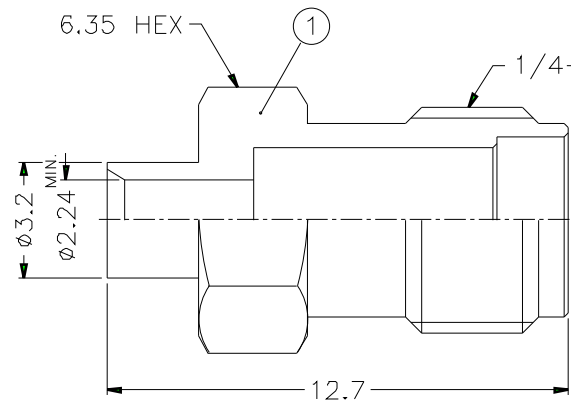
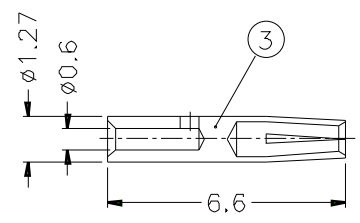
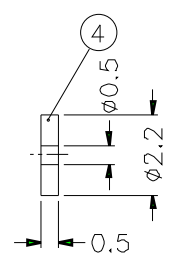


1		2		3		4		5		6		7		8	
REVISIONS															
ISS	ZONE	DESCRIPTION\PER REQUEST\DATE													



RECOMMENDED
CABLE STRIPPING DIM'S



- NOTES: FINISH (PLATING THICKNESS IN MICRO-INCHES)
- BRASS PER QQ-B-626
 - GOLD PL. 3 MIN. THICK OVER NICKEL PL. 100 MIN. THICK OVER COPPER STRIKE
 - BERYLLIUM COPPER PER QQ-C-530
 - GOLD PL. 50 MIN. THICK OVER NICKEL PL. 100 MIN. THICK OVER COPPER STRIKE
 - TEFLON MIL-P-19468

1. CONTACT PIN TO SOLDER

DIMENSIONS ARE IN MILLIMETERS										PART NO. SMA6181A2-3GT50G-11-50		Amphenol					
UNLESS OTHERWISE SPECIFIED TOLERANCES										APPROVED						DATE 10-11-01'	
0.5-6 = ±0.2										CHECKED		DATE 10-11-01'		DRAWING NO. KJ-SMA6181A2-3GT50G-.085-50			
6-30 = ±0.4										DRAWN		DATE 10-11-01'		ITEM NO.			
30-120 = ±0.6																	
120-315 = ±1																	
315-1000 = ±1.6																	
1000-2000 = ±2.4																	
4	INSULATOR	NOTE 5	NATURAL	1	SMA1181A2-5T-50	SCALE	5/1	ISSUE	A	FILE NO.							
3	CONTACT PIN	NOTE 3	NOTE 4	1	SMA7081-3-127/06-B												
2	INSULATOR	NOTE 5	NATURAL	1	SMA7081-2T-50												
1	BODY	NOTE 1	NOTE 2	1	SMA7081-1-32/224-C												
NO	DESCRIPTION	MATERIAL	FINISH	Q'TY	DRAWING NO.												

1		2		3		4		5		6		7		8	
---	--	---	--	---	--	---	--	---	--	---	--	---	--	---	--