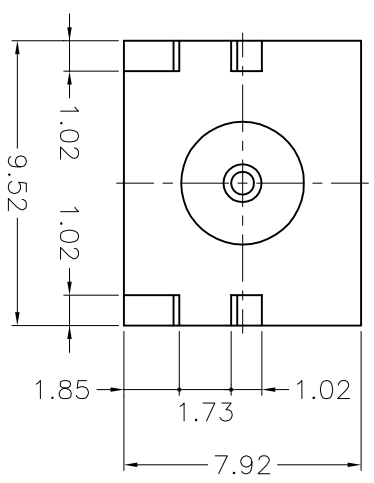
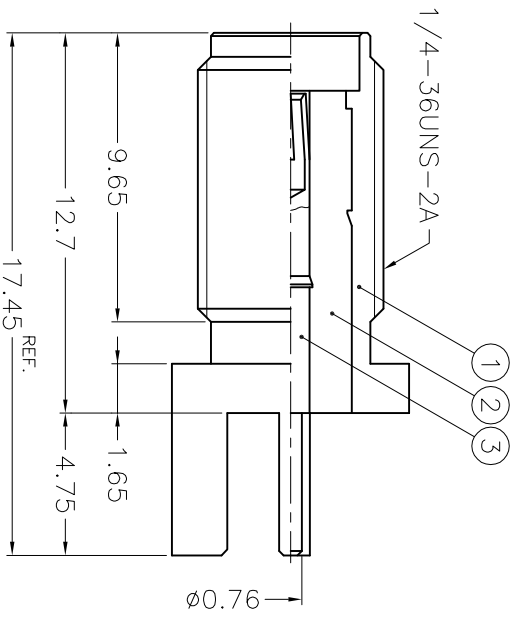
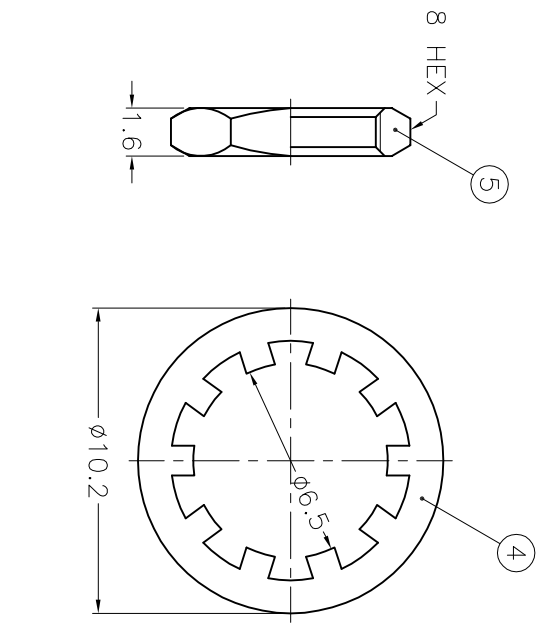


ISS	ZONE	DESCRIPTION\PER REQUEST\DATE

REVISIONS

F



- NOTES: FINISH (PLATING THICKNESS IN MICRO-INCHES)
1. BRASS PER 00-B-626
 2. BRASS PER 00-B-613
 3. BERYLLIUM COPPER PER 00-C-530
 4. GOLD PL. 3 MIN. THICK OVER NICKEL PL. 100 MIN. THICK OVER COPPER STRIKE
 5. GOLD PL. 50 MIN. THICK OVER NICKEL PL. 100 MIN. THICK OVER COPPER STRIKE
 6. TEFLON MIL-P-19468

B

5	HEX NUT	NOTE 1	NOTE 4	1	HN8-1/4-36X16	DIMENSIONS ARE IN MILLIMETERS UNLESS OTHERWISE SPECIFIED TOLERANCES 0.5-6 = ±0.2 6-30 = ±0.4 30-120 = ±0.6 120-315 = ±1 315-1000 = ±1.6 1000-2000 = ±2.4
4	LOCK WASHER	NOTE 2	NOTE 4	1	LW-102/65X05	
3	CONTACT PIN	NOTE 3	NOTE 5	1	SMA6251A1-009	
2	INSULATOR	NOTE 6	NATURAL	1	SMA6251A1-009	
1	BODY	NOTE 1	NOTE 4	1	SMA6251A1-009	

NO.	DESCRIPTION	MATERIAL	FINISH	Q'TY	DRAWING NO.	SCALE	4/1	ISSUE	A
1									

PART NO.		TITLE	
APPROVED	DATE	APPROVED	DATE
CHECKED	DATE	CHECKED	DATE
DRAWN	DATE	DRAWN	DATE

<p>Amphenol - Kai Jack</p> <p>TAINAN TAIWAN</p>	
<p>SMA END LAUNCH RECEIPT. JACK</p>	
<p>DRAWING NO. KJ-SMA6251A1-009-3GT50G-50</p>	
<p>FILE NO. F:\DWG\SMA\6251A1\009\50\3GT50G</p>	

A

A

1 2 3 4 5 6 7 8