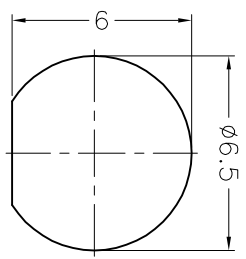
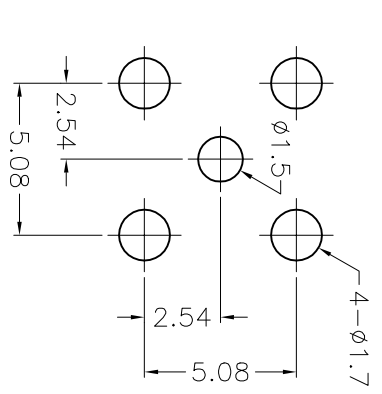
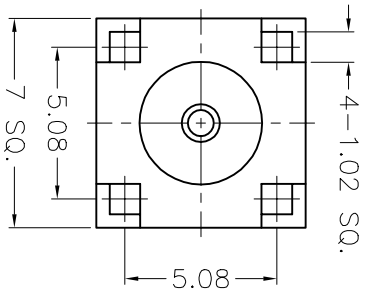


1	REVISIONS
2	DESCRIPTION \ PER REQUEST \ DATE
3	
4	
5	
6	
7	
8	

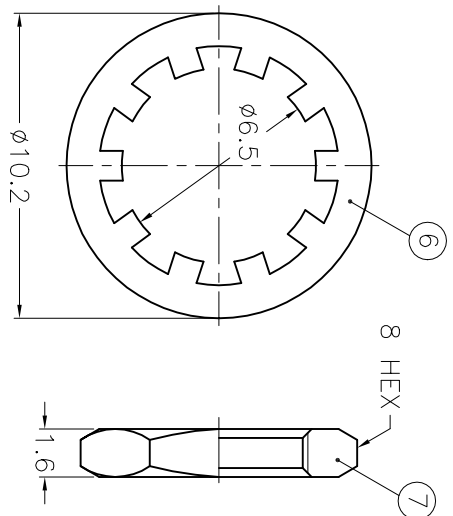
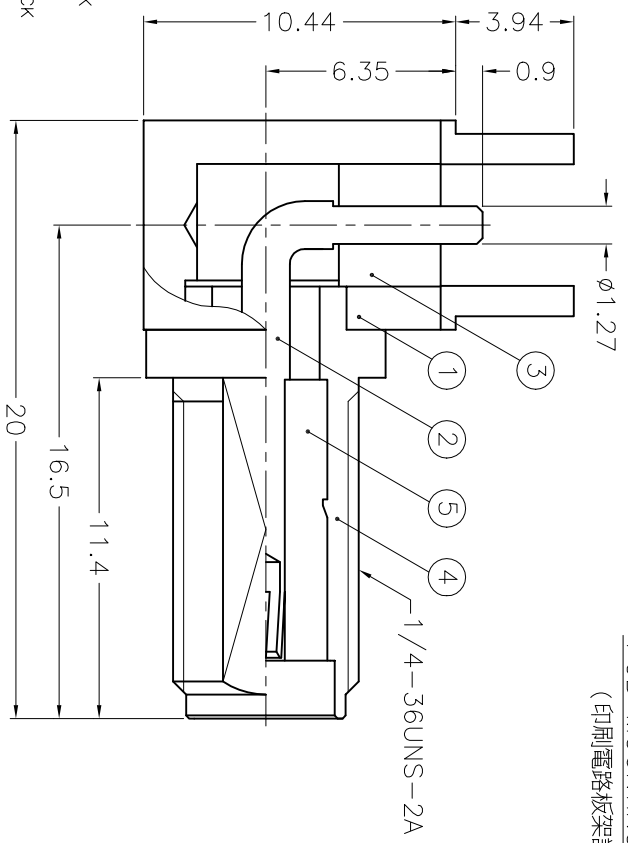


RECOMMENDED
MOUNTING HOLE
(建議架設孔)



1. MAX. PANEL THICKNESS = 3.2mm

- NOTES: FINISH (PLATING THICKNESS IN MICRO-INCHES)
1. BRASS PER QQ-B-626
 2. BRASS PER QQ-B-613
 3. GOLD PL. 3 MIN. THICK OVER NICKEL PL. 100 MIN. THICK OVER COPPER STRIKE
 4. BERYLLIUM COPPER PER QQ-C-530
 5. GOLD PL. 50 MIN. THICK OVER NICKEL PL. 100 MIN. THICK OVER COPPER STRIKE
 6. TEFLON MILL-P-19468



7	HEX NUT	NOTE 1	NOTE 3	1	HN8-1/4-36X16
6	LOCK WASHER	NOTE 2	NOTE 3	1	LW-102/65X05
5	INSULATOR	NOTE 6	NATURAL	1	132203-2
4	BODY	NOTE 1	NOTE 3	1	SMA6252A2-007-4
3	INSULATOR	NOTE 6	NATURAL	1	SMA7790-5T-50
2	CONTACT PIN	NOTE 4	NOTE 5	1	SMA6252A2-007-2
1	HOUSING	NOTE 1	NOTE 3	1	SMA6252A2-007-1

DIMENSIONS ARE IN MILLIMETERS
UNLESS OTHERWISE SPECIFIED

TOLERANCES

0.5-6 = ±0.2
6-30 = ±0.4
30-120 = ±0.6
120-315 = ±1
315-1000 = ±1.6
1000-2000 = ±2.4

PART NO.	
APPROVED	DATE
CHECKED	DATE
DRAWN	DATE

TITLE	Amphenol - Kai Jack
TAINAN TAIWAN	
SMA R/A P.C. MOUNT JACK	
DRAWING NO.	KJ-SMA6252A2-007-3GT50G-50
FILE NO.	F:\DWG\SMA\6252A2\007\50\36T50G

A

B

C

D

E

F

A

B

C

D

E

F