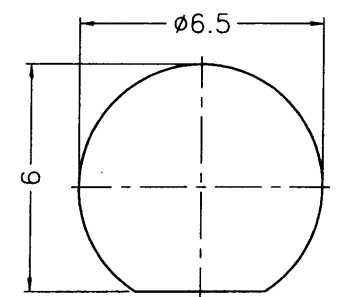
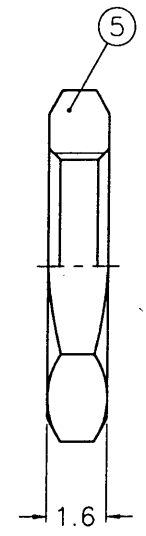
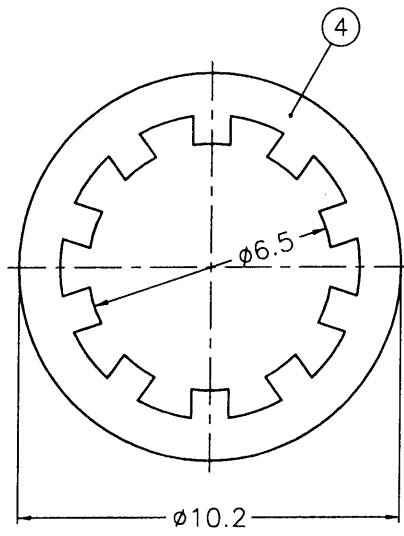
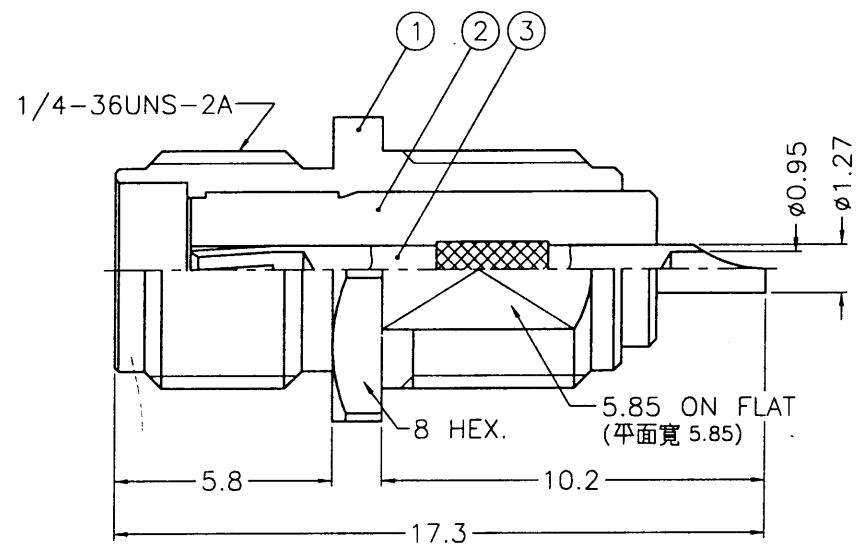


1 2 3 4 5 6 7 8

REVISIONS		
ISS	ZONE	DESCRIPTION\PER REQUEST\DATE
A1	A-1	NO.2 WAS CHANGED\N/A\08-27-03'

**SALES**

F  
E  
D  
C  
B  
A



RECOMMENDED MOUNTING HOLE  
(建議架設孔)

- NOTES: FINISH (PLATING THICKNESS IN MICRO-INCHES)
- BRASS PER QQ-B-626
  - BRASS PER QQ-B-613
  - GOLD PL. 3 MIN. THICK OVER NICKEL PL. 100 MIN. THICK OVER COPPER STRIKE
  - BERYLLIUM COPPER PER QQ-C-530
  - GOLD PL. 50 MIN. THICK OVER NICKEL PL. 100 MIN. THICK OVER COPPER STRIKE
  - TEFLON MIL-P-19468



1. MAX. PANEL THICKNESS=2.5mm

DIMENSIONS ARE IN MILLIMETERS						PART NO.		Amphenol	
5	HEX NUT	NOTE 1	NOTE 3	1	HN8-1/4-36X16	UNLESS OTHERWISE SPECIFIED TOLERANCES		APPROVED	DATE
4	LOCK WASHER	NOTE 2	NOTE 3	1	LW-102/65X05	0.5-6 = ±0.2	6-30 = ±0.4	<i>Coal. 25</i>	08-27-03'
3	CONTACT PIN	NOTE 4	NOTE 5	1	CP11AGP01A	30-120 = ±0.6	120-315 = ±1	CHECKED	DATE
2	INSULATOR	NOTE 6	NATURAL	1	NS11ACW01A	315-1000 = ±1.6	1000-2000 = ±2.4	<i>Coal. 25</i>	08-27-03'
1	BODY	NOTE 1	NOTE 3	1	BD11AKQ01A	DRAWN		DATE	08-27-03'
NO.	DESCRIPTION	MATERIAL.	FINISH	Q'TY	DRAWING NO.	SCALE	5/1	ISSUE	A1
						FILE NO.	F:\DWG\SMA\6351B1\50\3GT50G-A1		
								Danbury,CT,USA-Tainan,Taiwan-Shenzhen,China	
								TITLE	
								SMA BULKHEAD RECEPT. JACK	
								DRAWING NO.	
								SMA6351B1-3GT50G-50	
								ITEM NO.	
								116351AAA01GA5F	

R&D-DR 19187 8

1 2 3 4 5 6