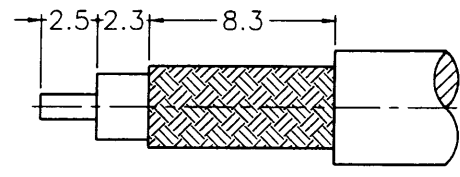
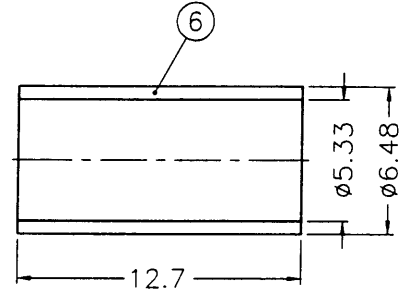
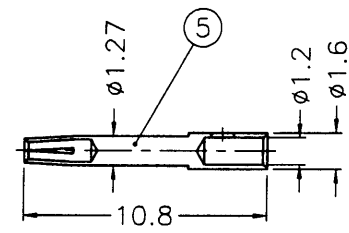
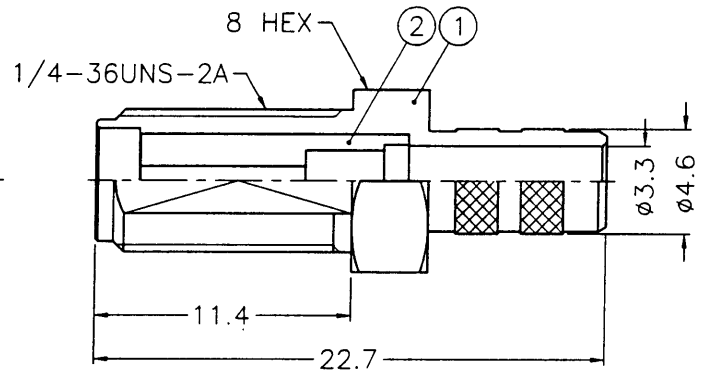
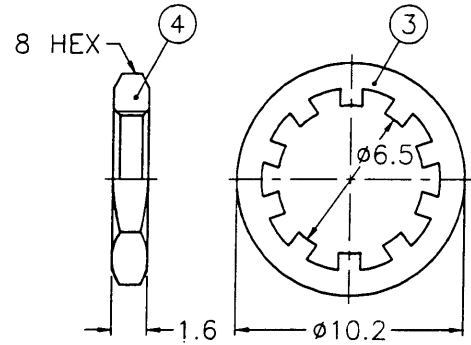


REVISIONS		
ISS	ZONE	DESCRIPTION\PER REQUEST\DATE

業務部



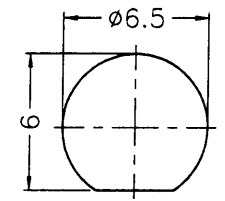
RECOMMENDED
CABLE STRIPPING DIM'S
(建議剝線尺寸)



- NOTES: FINISH (PLATING THICKNESS IN MICRO-INCHES)
1. BRASS PER QQ-B-626
 2. BRASS PER QQ-B-613
 3. GOLD PL. 3 MIN. THICK OVER NICKEL PL. 100 MIN. THICK OVER COPPER STRIKE
 4. BERYLLIUM COPPER PER QQ-C-530
 5. GOLD PL. 50 MIN. THICK OVER NICKEL PL. 100 MIN. THICK OVER COPPER STRIKE
 6. TEFLON MIL-P-19468

1. CRIMPED FERRULE
HEX CRIMP SIZE .213"
2. CONTACT PIN TO SOLDER

2000. 9. 05
業務部



RECOMMENDED
MOUNTING HOLE
(建議架設孔)

NO.	DESCRIPTION	MATERIAL	FINISH	Q'TY	DRAWING NO.	SCALE	3/1	ISSUE	A	PART NO.	TITLE
6	FERRULE	COPPER	NOTE 3	1	FR-648/533X127C	DIMENSIONS ARE IN MILLIMETERS				Amphenol - Kai Jack TAINAN TAIWAN SMA BULKHEAD CRIMP JACK (FOR TIMES LMR-200) KJ-SMA6411A1-3GT50G-LMR200-50 F:\DWG\SMA\6411A1\L200-50\3GT50G	
5	CONTACT PIN	NOTE 4	NOTE 5	1	SMA7000-3-16/12	UNLESS OTHERWISE SPECIFIED TOLERANCES					
4	HEX NUT	NOTE 1	NOTE 3	1	HN8-1/4-36X16	0.5-6 = ±0.2 6-30 = ±0.4					
3	LOCK WASHER	NOTE 2	NOTE 3	1	LW-102/65X05	30-120 = ±0.6 120-315 = ±1					
2	INSULATOR	NOTE 6	NATURAL	1	SMA7000-2T-50	315-1000 = ±1.6 1000-2000 = ±2.4					
1	BODY	NOTE 1	NOTE 3	1	SMA7400-1-46/33						
APPROVED	[Signature]		DATE	09-04-00'							
CHECKED	[Signature]		DATE	09-04-00'							
DRAWN	[Signature]		DATE	09-04-00'							