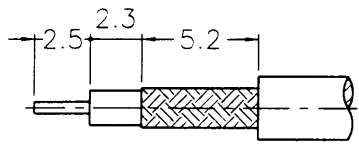
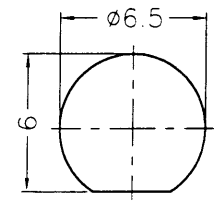


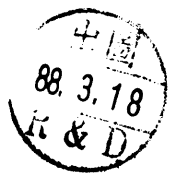
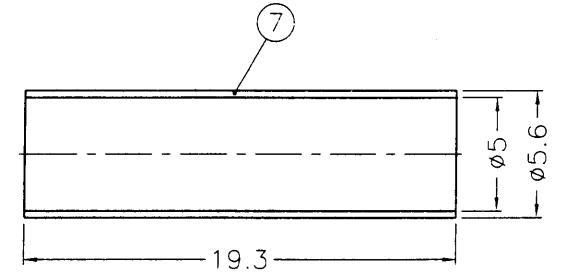
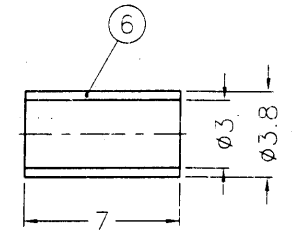
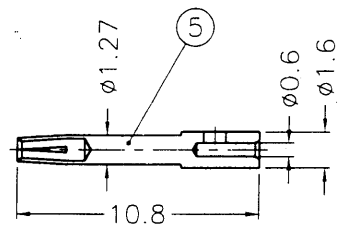
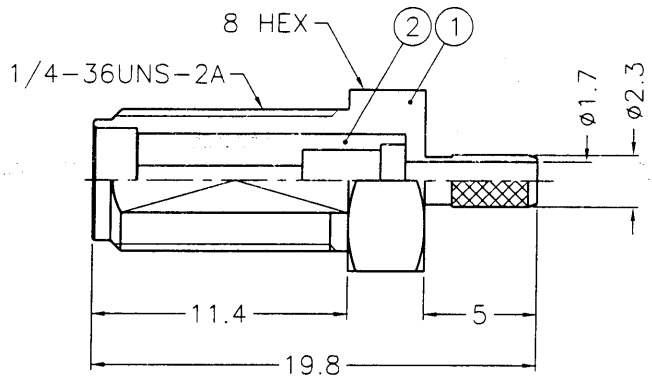
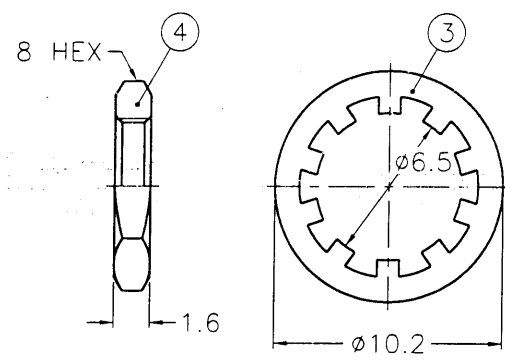
REVISIONS			
ISS	ZONE	DESCRIPTION\PER REQUEST\DATE	



RECOMMENDED CABLE STRIPPING DIM'S



RECOMMENDED MOUNTING HOLE



- NOTES: FINISH (PLATING THICKNESS IN MICRO-INCHES)
- BRASS PER QQ-B-626
 - BRASS PER QQ-B-613
 - GOLD PL. 3 MIN. THICK OVER NICKEL PL. 100 MIN. THICK OVER COPPER STRIKE
 - BERYLLIUM COPPER PER QQ-C-530
 - GOLD PL. 50 MIN. THICK OVER NICKEL PL. 100 MIN. THICK OVER COPPER STRIKE
 - TEFLON MIL-P-19468

7	HEAT SHRINK TUBING				HT-56/5X193
6	FERRULE	COPPER	NOTE 3	1	FR-38/3X7C
5	CONTACT PIN	NOTE 4	NOTE 5	1	SMA7000-3-16/06
4	HEX NUT	NOTE 1	NOTE 3	1	HN8-1/4-36X16
3	LOCK WASHER	NOTE 2	NOTE 3	1	LW-102/65X05
2	INSULATOR	NOTE 6	NATURAL	1	SMA7000-2T-50
1	BODY	NOTE 1	NOTE 3	1	SMA6411A2-1-23/17-C
NO.	DESCRIPTION	MATERIAL	FINISH	Q'TY	DRAWING NO.

DIMENSIONS ARE IN MILLIMETERS			PART NO.	
UNLESS OTHERWISE SPECIFIED TOLERANCES				
0.5-6	=	±0.2	APPROVED	DATE
6-30	=	±0.4	<i>Mark C</i>	03-17-99'
30-120	=	±0.6	CHECKED	DATE
120-315	=	±1	<i>Mark C</i>	03-17-99'
315-1000	=	±1.6	DRAWN	DATE
1000-2000	=	±2.4	<i>ala</i>	03-17-99'

		KAI JACK INDUSTRIAL CO., LTD. TAINAN TAIWAN R.O.C.
TITLE		SMA BULKHEAD CRIMP JACK (FOR RG-174/U,188A/U,316/U)
DRAWING NO.		KJ-SMA6411A2-3GT50G-316U-50
FILE NO.		F:\DWG\SMA\6411A2\316U-50\3GT50G

SMA6411A2