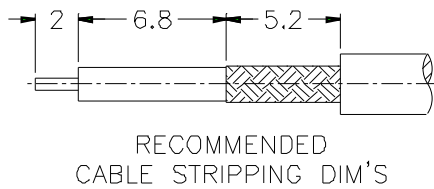
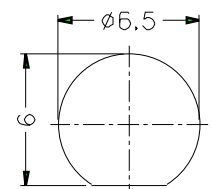


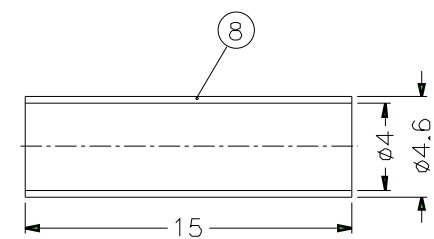
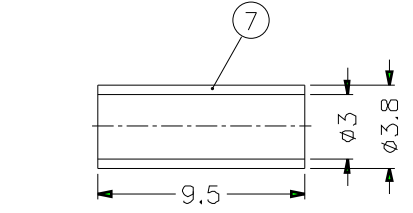
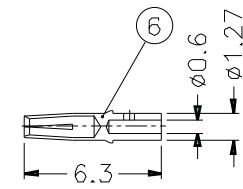
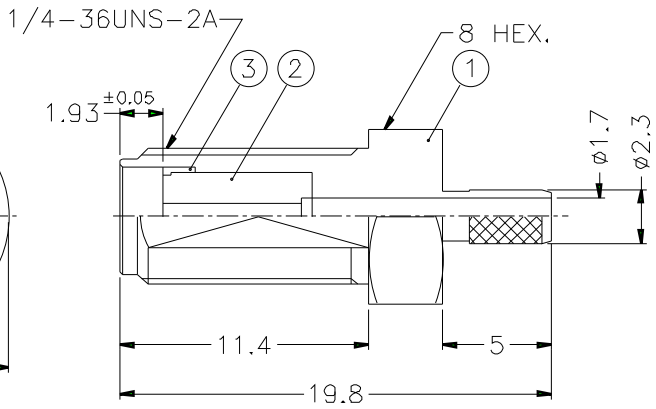
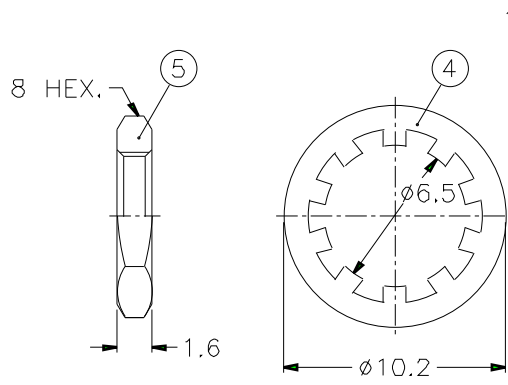
1		2		3		4		5		6		7		8	
REVISIONS															
ISS	ZONE	DESCRIPTION\PER REQUEST\DATE													



RECOMMENDED
CABLE STRIPPING DIM'S



RECOMMENDED
MOUNTING HOLE



- NOTES. FINISH (PLATING THICKNESS IN MICRO-INCHES)
- BRASS PER QQ-B-626
 - BRASS PER QQ-B-613
 - PASSIVATED PER QQ-P-35
 - BERYLLIUM COPPER PER QQ-C-530
 - GOLD PL. 50 MIN. THICK OVER NICKEL PL. 100 MIN. THICK OVER COPPER STRIKE
 - TEFLON MIL-P-19468
 - NICKEL PL. 100 MIN. THICK OVER COPPER STRIKE
 - STAINLESS STEEL PER QQ-S-764, TYPE 303

- CRIMPED FERRULE
HEX CRIMP SIZE .128"
- CONTACT PIN TO SOLDER
- MAX. PANEL THICKNESS=3.2mm

NO.	DESCRIPTION	MATERIAL	FINISH	Q'TY	DRAWING NO.
8	HEAT SHRINK TUBING		BLACK	1	HT-46/4X15
7	FERRULE	COPPER	NOTE 7	1	FR-38/3X95C
6	CONTACT PIN	NOTE 4	NOTE 5	1	SMA87051902-3
5	HEX NUT	NOTE 1	NOTE 7	1	HN8-1/4-36X16
4	LOCK WASHER	NOTE 2	NOTE 7	1	LW-102/65X05
3	RING	NOTE 8	NOTE 3	1	SMA7071A4-4
2	INSULATOR	NOTE 6	NATURAL	1	SMA6411A4-2T-50
1	BODY	NOTE 8	NOTE 3	1	SMA6411A4-1-23/17ST

DIMENSIONS ARE IN MILLIMETERS				PART NO. SMA6411A4-S/PT50G-5-50	
UNLESS OTHERWISE SPECIFIED TOLERANCES 0.5-6 = ±0.2 6-30 = ±0.4 30-120 = ±0.6 120-315 = ±1 315-1000 = ±1.6 1000-2000 = ±2.4				APPROVED	DATE
				CHECKED	DATE
				DRAWN	DATE
SCALE	3/1	ISSUE	A	FILE NO.	

Amphenol

TITLE SMA BULKHEAD CRIMP JACK
(FOR RG-174/U,188A/U,316/U)

DRAWING NO. KJ-SMA6411A4-S/PT50G-316U-50

ITEM NO.