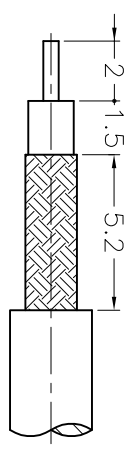


ISS	ZONE	DESCRIPTION \ PER REQUEST \ DATE

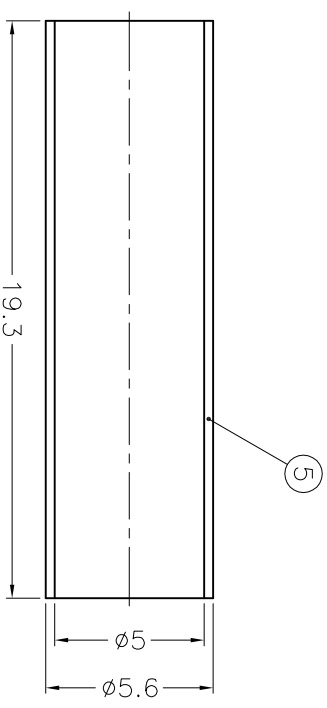
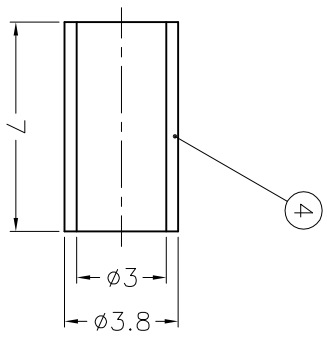
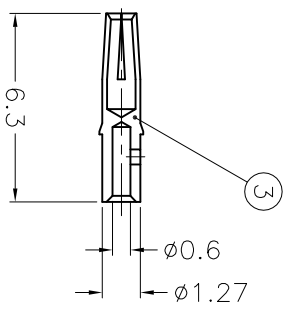
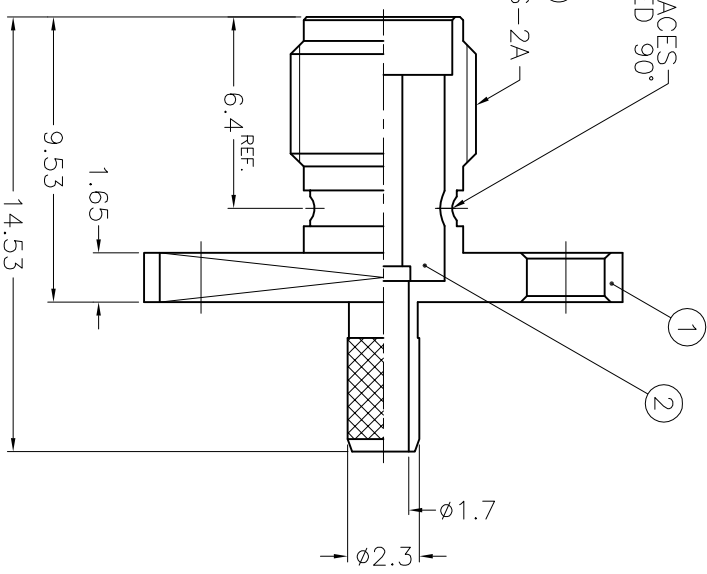
REVISIONS



RECOMMENDED  
CABLE STRIPPING DIM'S  
(建議剝線尺寸)

- REMARK: 1. NO. 2 MUST WITHSTAND A 6 lbs. MIN. PUSHOUT FORCE FROM NO.1 AFTER STAKING OPERATION  
2. REMARK 1 IS MAINTAINED BY STAMPING THE FOUR POINTS SHOWN ON THE DRAWING WITHOUT PUNCTURING NO.1  
(1. 打四點後零件2由零件1推出至少必須承受6磅推力)  
(2. 打四點後除需符合備註1 要求外 且不可擊穿零件1)

STAKE IN 4 PLACES EQUALLY SPACED 90° APART  
(打四點 間隔 90°)  
(SEE REMARK 1,2)



- NOTES: FINISH (PLATING THICKNESS IN MICRO-INCHES)
- BRASS PER 00-B-626
  - NICKEL PL. 100 MIN. THICK OVER COPPER STRIKE
  - BERYLLIUM COPPER PER 00-C-530
  - GOLD PL. 50 MIN. THICK OVER NICKEL PL. 100 MIN. THICK OVER COPPER STRIKE
  - TEFLON MIL-P-19468

1. CRIMPED FERRULE  
HEX CRIMP SIZE .128"

**Amphenol - Kai Jack**  
TAINAN TAIWAN

NO.	DESCRIPTION	MATERIAL	FINISH	Q'TY	DRAWING NO.
5	HEAT SHRINK TUBING			1	HT-56/5X193
4	FERRULE	COPPER	NOTE 2	1	FR-38/3x7C
3	CONTACT PIN	NOTE 3	NOTE 4	1	SMA87051902-3
2	INSULATOR	NOTE 4	NATURAL	1	SMA87051902-2
1	BODY	NOTE 1	NOTE 2	1	SMA6511B4-1-23

DIMENSIONS ARE IN MILLIMETERS  
UNLESS OTHERWISE SPECIFIED  
TOLERANCES

- 0.5-6 = ±0.2
- 6-30 = ±0.4
- 30-120 = ±0.6
- 120-315 = ±1
- 315-1000 = ±1.6
- 1000-2000 = ±2.4

PART NO.	APPROVED	CHECKED	DRAWN

JOYCE

TITLE	DRAWING NO.
SMA PANEL CRIMP JACK (FOR RG-174/U, 188A/U, 316/U)	KJ-SMA6511B4-NT50G-316U-50

FILE NO. F:\DWG\SMA\6511B4\316U-50\NT50G

1 2 3 4 5 6 7 8