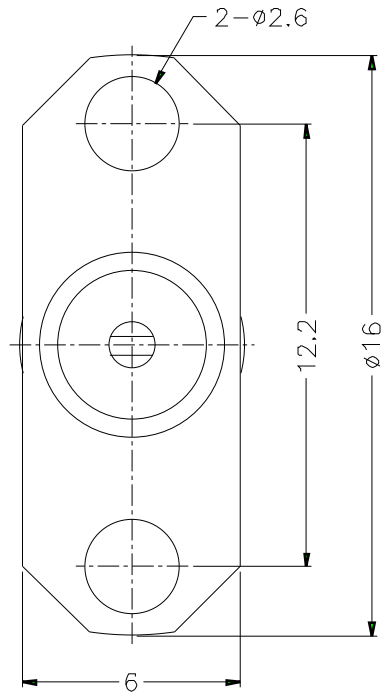
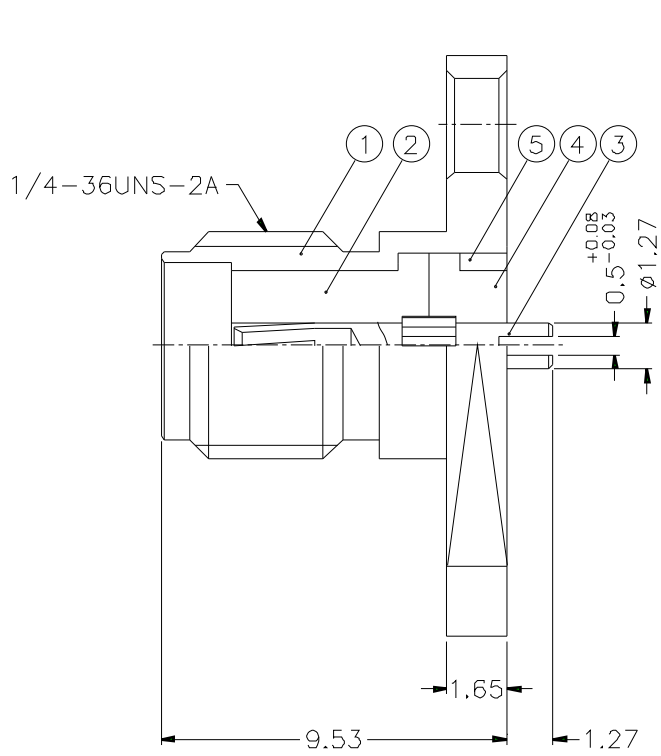


1	2		3		4		5		6		7		8	
REVISIONS														
ISS	ZONE	DESCRIPTION\PER REQUEST\DATE												



- NOTES: FINISH (PLATING THICKNESS IN MICRO-INCHES)
1. BRASS PER QQ-B-626
 2. GOLD PL. 3 MIN. THICK OVER NICKEL PL. 100 MIN. THICK OVER COPPER STRIKE
 3. BERYLLIUM COPPER PER QQ-C-530
 4. GOLD PL. 50 MIN. THICK OVER NICKEL PL. 100 MIN. THICK OVER COPPER STRIKE
 5. TEFLON MIL-P-1946B

DIMENSIONS ARE IN MILLIMETERS										PART NO. SMA6551D1-3GT50G-0.5-50	
UNLESS OTHERWISE SPECIFIED TOLERANCES										APPROVED _____ DATE 10-11-01'	
0.5-6 = ±0.2										CHECKED _____ DATE 10-11-01'	
6-30 = ±0.4										DRAWN _____ DATE 10-11-01'	
30-120 = ±0.6										FILE NO. _____	
120-315 = ±1											
315-1000 = ±1.6											
1000-2000 = ±2.4											

<h1>Amphenol</h1>	
TITLE SMA PANEL RECEPT. JACK	
DRAWING NO. KJ-SMA6551D1-3GT50G-0.5-50	
ITEM NO.	

5	RING	NOTE 1	NOTE 2	1	SMA7530-5-B
4	INSULATOR	NOTE 5	NATURAL	1	SMA7530-4T-50
3	CONTACT PIN	NOTE 3	NOTE 4	1	SMA7540-3-0.5
2	INSULATOR	NOTE 5	NATURAL	1	SMA7530-2T-50-B
1	BODY	NOTE 1	NOTE 2	1	SMA7535-1-B
NO	DESCRIPTION	MATERIAL	FINISH	Q'TY	DRAWING NO.

1	2	3	4	5	6	7	8
---	---	---	---	---	---	---	---