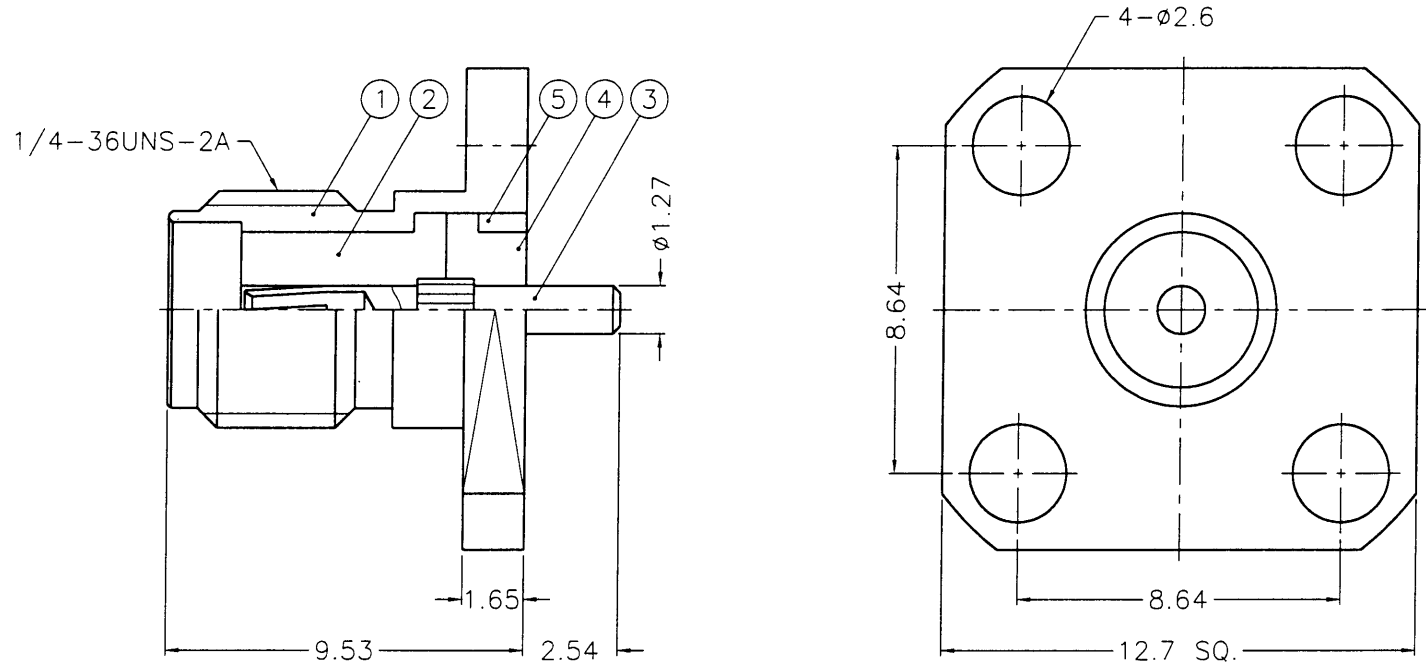


業務部



- NOTES: FINISH (PLATING THICKNESS IN MICRO-INCHES)
1. BRASS PER QQ-B-626
 2. GOLD PL. 3 MIN. THICK OVER NICKEL PL. 100 MIN. THICK OVER COPPER STRIKE
 3. GOLD PL. 50 MIN. THICK OVER NICKEL PL. 100 MIN. THICK OVER COPPER STRIKE
 4. TEFLON MIL-P-19468
 5. BERYLLIUM COPPER PER QQ-C-530



| | | | | | | | |
|---------------------------------------|--|--|--|----------|-----------|-----------------------------|------------------------|
| DIMENSIONS ARE IN MILLIMETERS | | | | PART NO. | | | |
| UNLESS OTHERWISE SPECIFIED TOLERANCES | | | | APPROVED | DATE | | TITLE |
| 0.5-6 = ±0.2 | | | | | 12-15-98' | | SMA PANEL RECEPT. JACK |
| 6-30 = ±0.4 | | | | | CHECKED | | DATE |
| 30-120 = ±0.6 | | | | | 12-15-98' | KJ-SMA6551E9-3GT50G-50 | |
| 120-315 = ±1 | | | | | DRAWN | DATE | FILE NO. |
| 315-1000 = ±1.6 | | | | | 12-15-98' | F:\DWG\SMA\6551E9\50\3GT50G | |
| 1000-2000 = ±2.4 | | | | | | | |

| 5 | RING | NOTE 1 | NOTE 2 | 1 | SMA7530-5-B |
|-----|-------------|----------|---------|------|---------------|
| 4 | INSULATOR | NOTE 4 | NATURAL | 1 | SMA7530-4T-50 |
| 3 | CONTACT PIN | NOTE 5 | NOTE 3 | 1 | SMA6551E9-3 |
| 2 | INSULATOR | NOTE 4 | NATURAL | 1 | SMA7530-2T-50 |
| 1 | BODY | NOTE 1 | NOTE 2 | 1 | SMA7530-1-B |
| NO. | DESCRIPTION | MATERIAL | FINISH | Q'TY | DRAWING NO. |

871021372