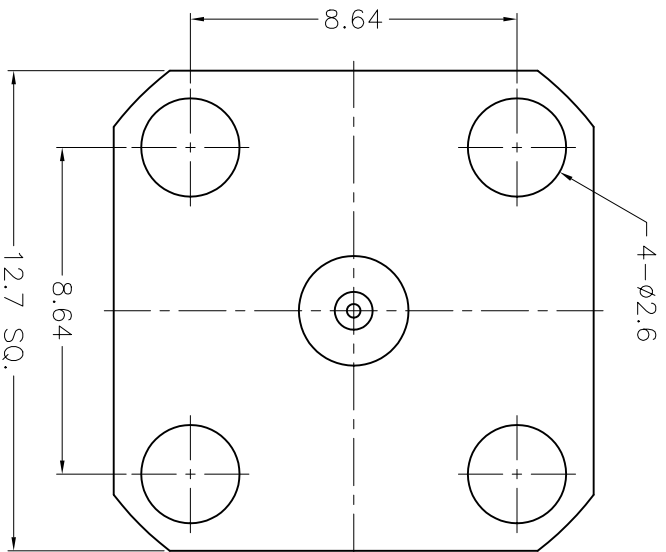
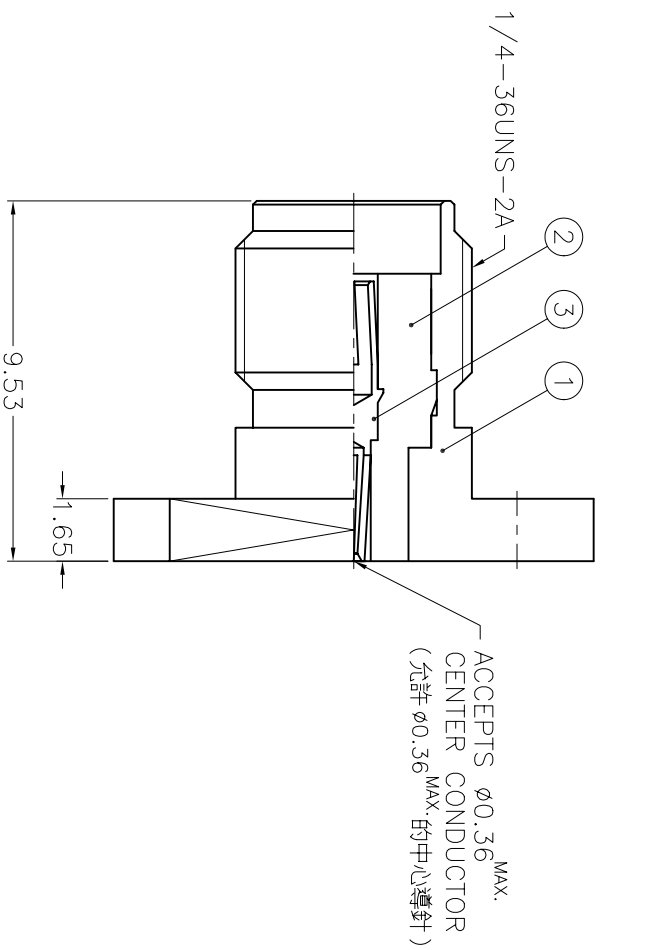


1	2	3	4	5	6	7	8
REVISONS							
ISS	ZONE	DESCRIPTION\PER REQUEST\DATE					



- NOTES: FINISH (PLATING THICKNESS IN MICRO-INCHES)
1. BRASS PER QQ-B-629
 2. BERYLLIUM COPPER PER QQ-C-530
 3. GOLD PL. 3 MIN. THICK OVER NICKEL PL. 100 MIN. THICK OVER COPPER STRIKE
 4. GOLD PL. 50 MIN. THICK OVER NICKEL PL. 100 MIN. THICK OVER COPPER STRIKE
 5. TEFLON MIL-P-19468

NO.	DESCRIPTION	MATERIAL	FINISH	Q'TY	DRAWING NO.
1	BODY	NOTE 1	NOTE 3	1	SMA6551K1-1-B
2	INSULATOR	NOTE 5	NATURAL	1	SMA6551K1-2
3	CONTACT PIN	NOTE 2	NOTE 4	1	CP11AEM03A

DIMENSIONS ARE IN MILLIMETERS		PART NO.	
UNLESS OTHERWISE SPECIFIED TOLERANCES		APPROVED	
0.5-6 = ±0.2	6-30 = ±0.4	30-120 = ±0.6	120-315 = ±1
315-1000 = ±1.6	1000-2000 = ±2.4	DATE	
SCALE 5/1		01-31-02'	
ISSUE A		DATE	
FILE NO. F:\DWG\SMA\6551K1\012-50\3GT50G		01-31-02'	
DRAWN		DATE	

Amphenol - Kai Jack	
TAINAN TAIWAN	
TITLE SMA PANEL RECEIPT. JACK	
DRAWING NO. KJ-SMA6551K1-3GT50G-.012-50	
ITEM NO.	116551ABT05GAS5F