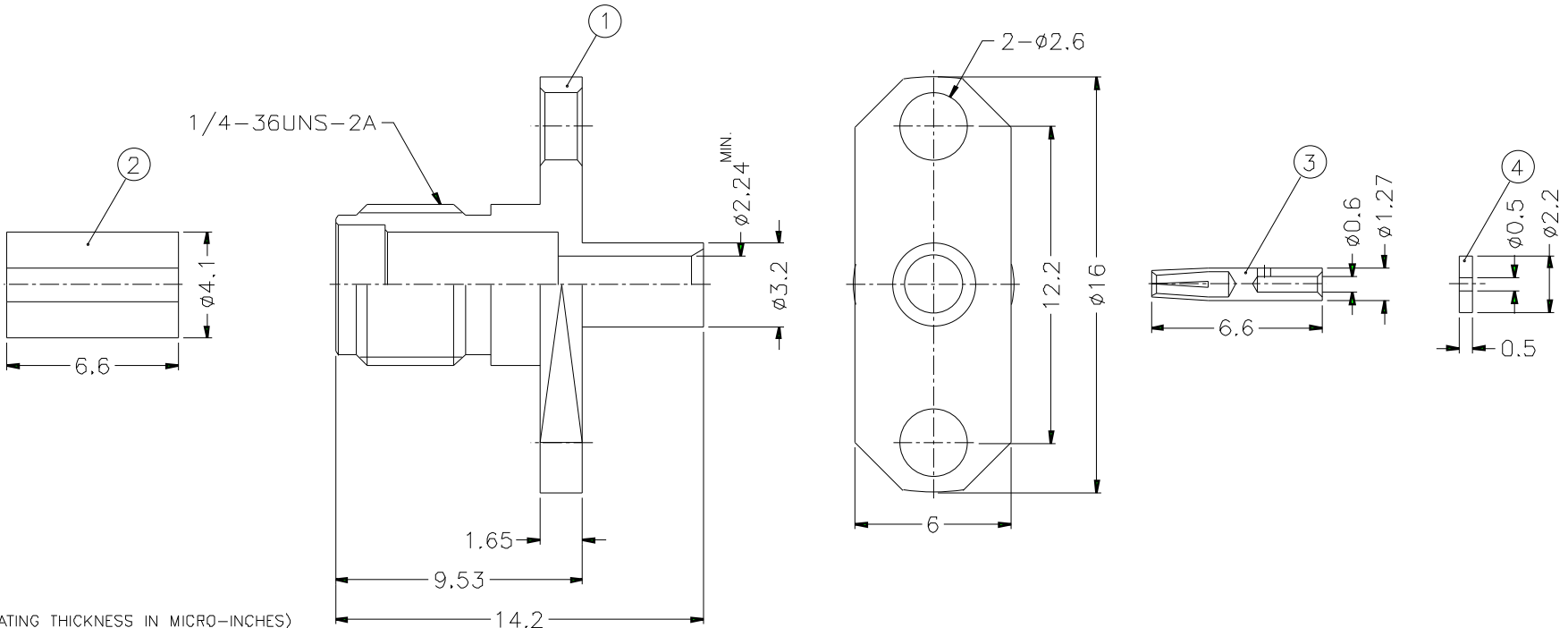
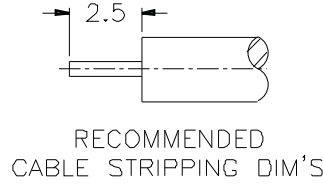


REVISIONS		
ISS	ZONE	DESCRIPTION\PER REQUEST\DATE



NOTES: FINISH (PLATING THICKNESS IN MICRO-INCHES)  
 1. BRASS PER QQ-B-626  
 2. GOLD PL. 3 MIN. THICK OVER NICKEL PL. 100 MIN. THICK OVER COPPER STRIKE  
 3. BERYLLIUM COPPER PER QQ-C-530  
 4. GOLD PL. 50 MIN. THICK OVER NICKEL PL. 100 MIN. THICK OVER COPPER STRIKE  
 5. TEFLON MIL-P-19468

1. CONTACT PIN TO SOLDER

DIMENSIONS ARE IN MILLIMETERS				PART NO. SMA6581B2-3GT50G-11-50	
UNLESS OTHERWISE SPECIFIED TOLERANCES				APPROVED	DATE
0.5-6 = ±0.2					10-11-01'
6-30 = ±0.4				CHECKED	DATE
30-120 = ±0.6					10-11-01'
120-315 = ±1				DRAWN	DATE
315-1000 = ±1.6					10-11-01'
1000-2000 = ±2.4				FILE NO.	

<b>Amphenol</b>	
TITLE SMA SEMI-RIGID PANEL JACK (FOR .085", .086")	
DRAWING NO. KJ-SMA6581B2-3GT50G-.085-50	
ITEM NO.	

NO.	DESCRIPTION	MATERIAL	FINISH	Q'TY	DRAWING NO.	SCALE	4/1	ISSUE	A
4	INSULATOR	NOTE 5	NATURAL	1	SMA1181A2-5T-50				
3	CONTACT PIN	NOTE 3	NOTE 4	1	SMA7081-3-127/06-B				
2	INSULATOR	NOTE 5	NATURAL	1	SMA7081-2T-50				
1	BODY	NOTE 1	NOTE 2	1	SMA7585-1-32/224-B				