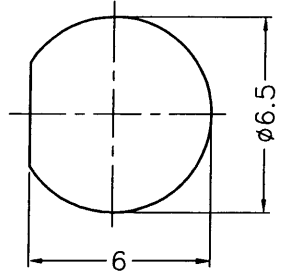


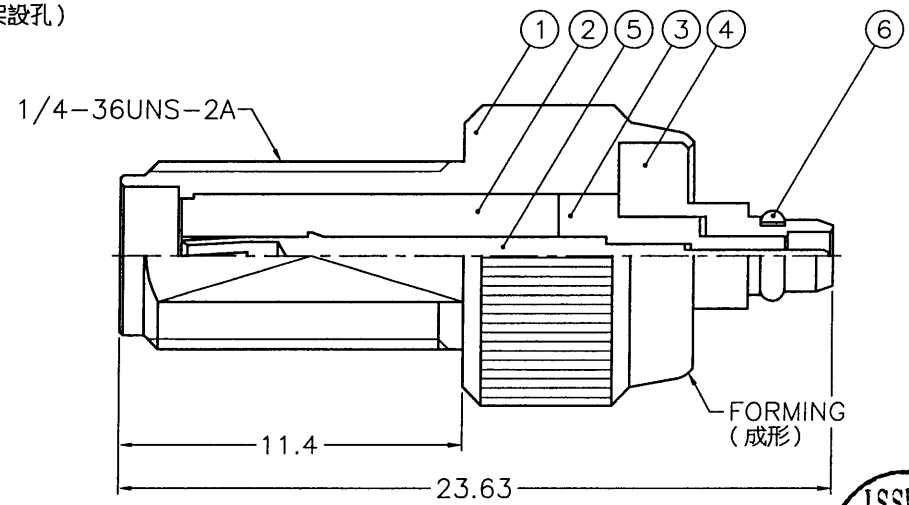
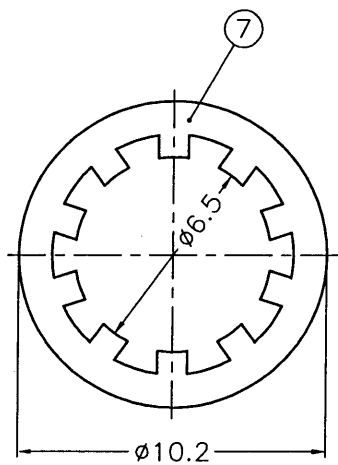
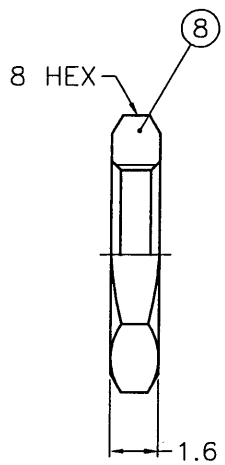
1 2 3 4 5 6 7 8

REVISIONS		
ISS	ZONE	DESCRIPTION\PER REQUEST\DATE

SALES



RECOMMENDED MOUNTING HOLE
(建議架設孔)



- NOTES: FINISH (PLATING THICKNESS IN MICRO-INCHES)
- BRASS PER QQ-B-626
 - BRASS PER QQ-B-613
 - GOLD PL. 3 MIN. THICK OVER NICKEL PL. 100 MIN. THICK OVER COPPER STRIKE
 - BERYLLIUM COPPER PER QQ-C-530
 - GOLD PL. 30 MIN. THICK OVER NICKEL PL. 100 MIN. THICK OVER COPPER STRIKE
 - TEFLON MIL-P-19468

ISSUED
2004. 8. 25
R & D

1. MAX. PANEL THICKNESS=8.8mm

NO.	DESCRIPTION	MATERIAL	FINISH	Q'TY	DRAWING NO.
8	HEX NUT	NOTE 1	NOTE 3	1	HN8-1/4-36X16
7	LOCK WASHER	NOTE 2	NOTE 3	1	LW-102/65X05
6	RETAINER RING	NOTE 4	NOTE 3	1	MMCX1121A1-5-C
5	CONTACT PIN	NOTE 4	NOTE 5	1	CP11ADG02A
4	BODY	NOTE 1	NOTE 3	1	SMAF-MMCXM1-5-B
3	INSULATOR	NOTE 6	NATURAL	1	SMAF-MMCXM1-2-C
2	INSULATOR	NOTE 6	NATURAL	1	NS11AAB24A
1	HOUSING	NOTE 1	NOTE 3	1	HS00AMK01A

DIMENSIONS ARE IN MILLIMETERS		PART NO.	
UNLESS OTHERWISE SPECIFIED TOLERANCES		APPROVED	DATE
0.5-6 = ±0.2		<i>Scott.H</i>	08-23-04'
6-30 = ±0.4		CHECKED	DATE
30-120 = ±0.6		<i>Scott.H</i>	08-23-04'
120-315 = ±1		DRAWN	DATE
315-1000 = ±1.6		<i>Jay C</i>	08-23-04'
1000-2000 = ±2.4			
SCALE 4/1	ISSUE A2	FILE NO.	F:\DWG\SMAF\MMCXM2\50\3GT30G-A2

Amphenol	
Danbury,CT,USA-Tainan,Taiwan-Shenzhen,China	
TITLE	SMA FEMALE TO MMCX MALE ADAPTOR
DRAWING NO.	SMAF-MMCXM2-3GT30G-50
ITEM NO.	11F-09M2-GE-5-F

F
E
D
C
B
A

F
E
D
C
B
A

1 2 3 4 5 6 7 8

7RD-DR 22728 8