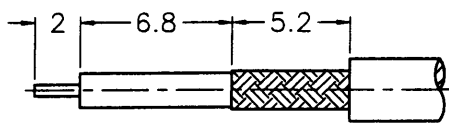
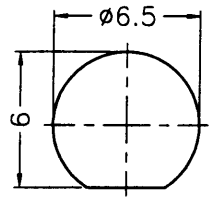


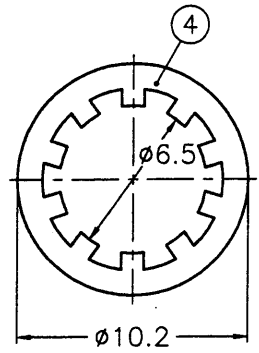
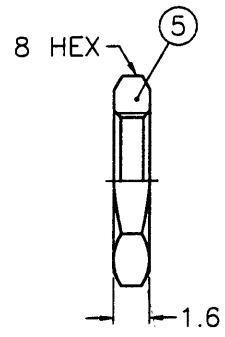
REVISIONS		
ISS	ZONE	DESCRIPTION\PER REQUEST\DATE



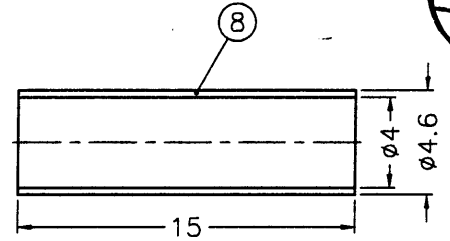
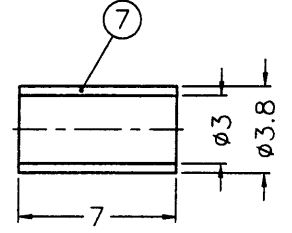
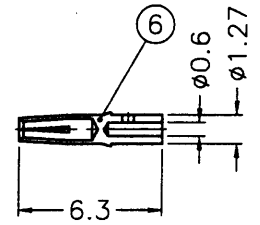
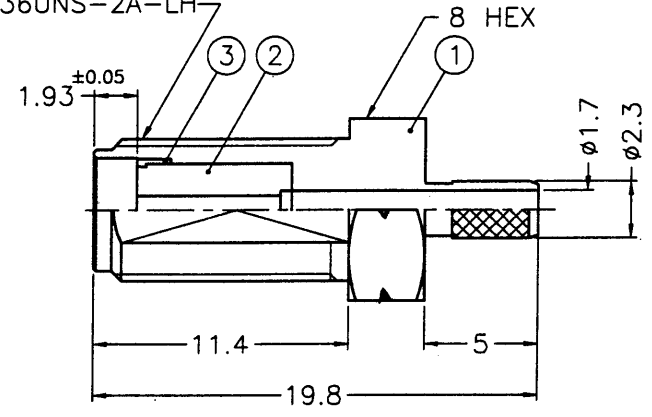
RECOMMENDED
CABLE STRIPPING DIM'S
(建議剝線尺寸)



RECOMMENDED
MOUNTING HOLE
(建議架設孔)



1/4-36UNS-2A-LH



- 1. CRIMPED FERRULE
HEX CRIMP SIZE .128"
- 2. CONTACT PIN TO SOLDER

NOTES: FINISH (PLATING THICKNESS IN MICRO-INCHES)
 1. BRASS PER QQ-B-626
 2. BRASS PER QQ-B-613
 3. GOLD PL. 3 MIN. THICK OVER NICKEL PL. 100 MIN. THICK OVER COPPER STRIKE
 4. BERYLLIUM COPPER PER QQ-C-530
 5. GOLD PL. 50 MIN. THICK OVER NICKEL PL. 100 MIN. THICK OVER COPPER STRIKE
 6. TEFLON MIL-P-19468

8	HEAT SHRINK TUBING	BLACK	1	HT-46/4X15
7	FERRULE	COPPER	NOTE 3	1 FR-38/3X7C
6	CONTACT PIN	NOTE 4	NOTE 5	1 SMA87051902-3
5	HEX NUT	NOTE 1	NOTE 3	1 HN8-L1/4-36X16
4	LOCK WASHER	NOTE 2	NOTE 3	1 LW-102/65X05
3	RING	NOTE 1	NOTE 3	1 SMA7071A4-4B
2	INSULATOR	NOTE 6	NATURAL	1 SMA6411A4-2T-50
1	BODY	NOTE 1	NOTE 3	1 SMAL6411A4-1-23/17

DIMENSIONS ARE IN MILLIMETERS			PART NO.	
UNLESS OTHERWISE SPECIFIED TOLERANCES			APPROVED	DATE
0.5-6	= ±0.2		<i>Angela</i>	12-24-01'
6-30	= ±0.4		CHECKED	DATE
30-120	= ±0.6		<i>Angela</i>	12-24-01'
120-315	= ±1		DRAWN	DATE
315-1000	= ±1.6		ANGELA	12-24-01'
1000-2000	= ±2.4			
SCALE	3/1	ISSUE	1	FILE NO. F:\DWG\SMAL\6411A4\316U-50\3GT50G

Amphenol - Kai Jack
TAINAN TAIWAN

TITLE SMA BULKHEAD CRIMP JACK
(FOR RG-174/U,188A/U,316/U)

DRAWING NO. KJ-SMAL6411A4-3GT50G-316U-50

ITEM NO.

F
E
D
C
B
A

F
E
D
C
B
A