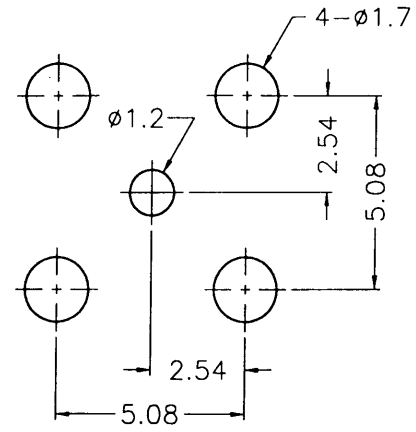
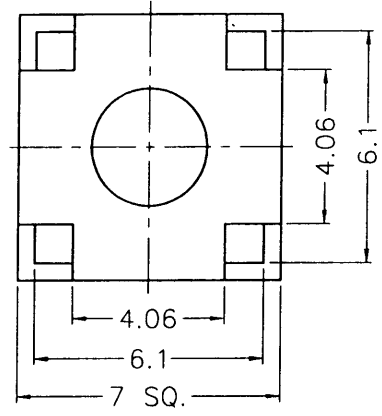
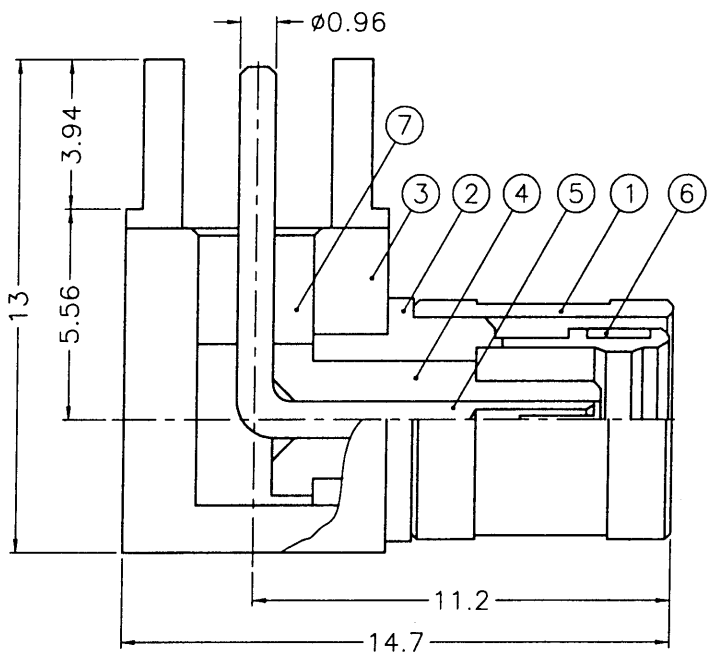


REVISIONS		
ISS	ZONE	DESCRIPTION\PER REQUEST\DATE
B	A-1	NO.5 WAS CHANGED\RD-DM88090201B\09-02-99'
C	A-1	NO.2 WAS CHANGED\RD-DM92090201L\09-02-03'



PCB MOUNTING HOLE
(印刷电路板架設孔)



- NOTES: FINISH (PLATING THICKNESS IN MICRO-INCHES)
1. BRASS PER QQ-B-626
 2. GOLD PL. 3 MIN. THICK OVER NICKEL PL. 100 MIN. THICK OVER COPPER STRIKE
 3. BERYLLIUM COPPER PER QQ-C-530
 4. GOLD PL. 30 MIN. THICK OVER NICKEL PL. 100 MIN. THICK OVER COPPER STRIKE
 5. TEFLON MIL-P-19468



NO.	DESCRIPTION	MATERIAL	FINISH	Q'TY	DRAWING NO.
7	INSULATOR	NOTE 5	NATURAL	1	SMB7790-5T-50
6	RETAINER RING	NOTE 3	NATURAL	1	SMB5000-6
5	CONTACT PIN	NOTE 3	NOTE 4	1	SMB5790-5-B
4	INSULATOR	NOTE 5	NATURAL	1	SMB5790-4T-50
3	HOUSING	NOTE 1	NOTE 2	1	SMB7790-1
2	BODY	NOTE 1	NOTE 2	1	SMB5790-2-B
1	SHELL	NOTE 1	NOTE 2	1	SMB5000-1

DIMENSIONS ARE IN MILLIMETERS			
UNLESS OTHERWISE SPECIFIED TOLERANCES			
0.5-6	=	±0.2	
6-30	=	±0.4	
30-120	=	±0.6	
120-315	=	±1	
315-1000	=	±1.6	
1000-2000	=	±2.4	

PART NO.	
APPROVED	DATE 09-02-03'
CHECKED	DATE 09-02-03'
DRAWN	DATE 09-02-03'
FILE NO.	F:\DWG\SMB\6252B1\50\3GT30G-C

Amphenol	
Danbury,CT,USA-Tainan,Taiwan-Shenzhen,China	
TITLE	SMB R/A P.C. MOUNT PLUG
DRAWING NO.	SMB6252B1-3GT30G-50
ITEM NO.	126252AAA02GE5F

7 PD-DR 19-7-8