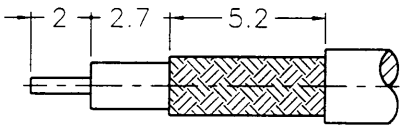


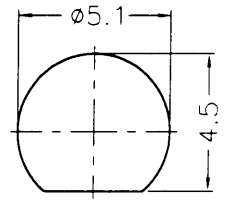
1 2 3 4 5 6 7 8

| REVISIONS |      |                              |  |
|-----------|------|------------------------------|--|
| ISS       | ZONE | DESCRIPTION\PER REQUEST\DATE |  |
|           |      |                              |  |

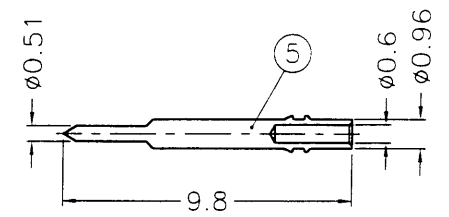
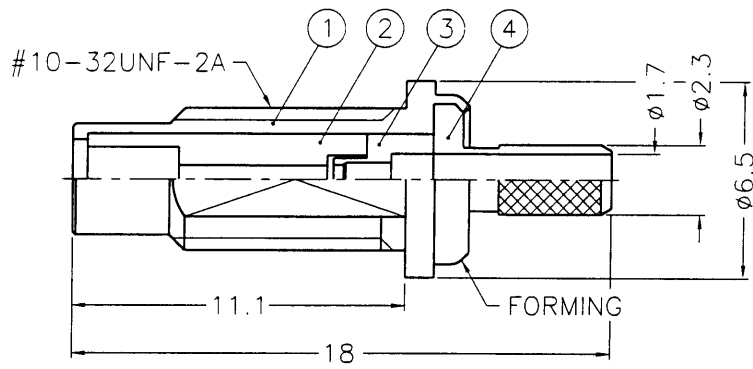
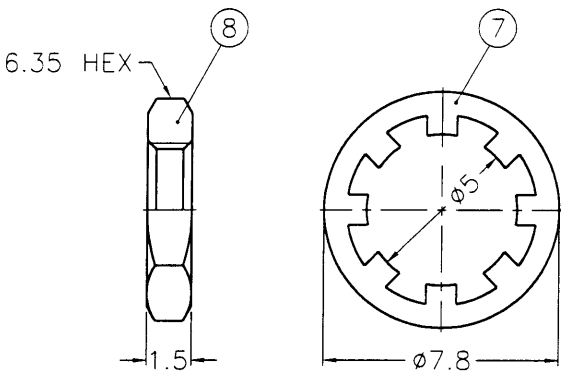
業務部



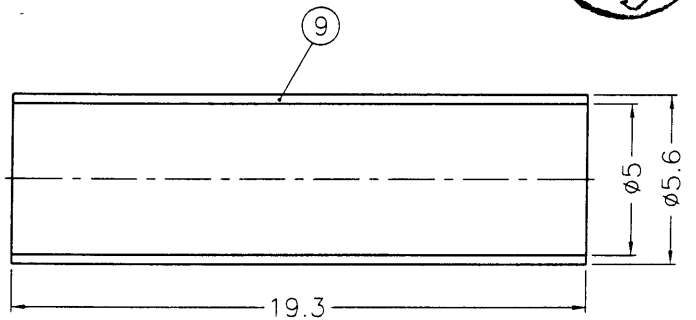
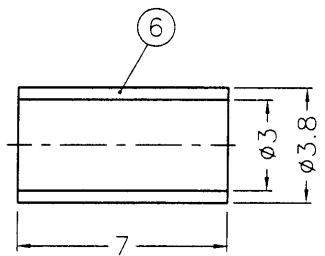
RECOMMENDED CABLE STRIPPING DIM'S



RECOMMENDED MOUNTING HOLE



NOTES: FINISH (PLATING THICKNESS IN MICRO-INCHES)  
 1. BRASS PER QQ-B-626  
 2. BRASS PER QQ-B-613  
 3. GOLD PL. 3 MIN. THICK OVER NICKEL PL. 100 MIN. THICK OVER COPPER STRIKE  
 4. GOLD PL. 30 MIN. THICK OVER NICKEL PL. 100 MIN. THICK OVER COPPER STRIKE  
 5. TEFLON MIL-P-19468



|   |                    |        |         |   |                     |
|---|--------------------|--------|---------|---|---------------------|
| 9 | HEAT SHRINK TUBING |        |         | 1 | HT-56/5X193         |
| 8 | HEX NUT            | NOTE 1 | NOTE 3  | 1 | HN635-10-32X15      |
| 7 | LOCK WASHER        | NOTE 2 | NOTE 3  | 1 | LW-78/5X05          |
| 6 | FERRULE            | COPPER | NOTE 3  | 1 | FR-38/3X7C          |
| 5 | CONTACT PIN        | NOTE 1 | NOTE 4  | 1 | SMB1421A1-5-096/06  |
| 4 | BARREL             | NOTE 1 | NOTE 3  | 1 | SMB6121A1-4-23/17-C |
| 3 | INSULATOR          | NOTE 5 | NATURAL | 1 | SMB6121B2-3T-50     |
| 2 | INSULATOR          | NOTE 5 | NATURAL | 1 | SMB1421A1-2T-50     |
| 1 | BODY               | NOTE 1 | NOTE 3  | 1 | SMC1421A1-1         |

DIMENSIONS ARE IN MILLIMETERS  
 UNLESS OTHERWISE SPECIFIED TOLERANCES  
 0.5-6 = ±0.2  
 6-30 = ±0.4  
 30-120 = ±0.6  
 120-315 = ±1  
 315-1000 = ±1.6  
 1000-2000 = ±2.4

| PART NO. |                |
|----------|----------------|
| APPROVED | DATE 01-20-99' |
| CHECKED  | DATE 01-20-99' |
| DRAWN    | DATE 01-20-99' |

| KAI JACK INDUSTRIAL CO., LTD.<br>TAINAN TAIWAN R.O.C. |   |
|---|---|
| TITLE   | SMC BULKHEAD CRIMP JACK (FOR RG-174/U,188A/U,316/U) |
| DRAWING NO.   | KJ-SMC1421A1-3GT30G-316U-50                         |
| FILE NO.  | EX-DMC\SMC\1421A1\316U-50\3GT30G                    |

F  
E  
D  
C  
B  
A

F  
E  
D  
C  
B  
A